

Florence Lake 2014 Data Summary

Florence Lake Snapshot

Years Monitored: 11
 Total # of Events: 34
 2014 Events: 4
 Total Hours Monitored: 136

Observations

Wildlife Observed:

Goldeneye with chicks
 Loon
 Mallard with chicks
 Red-necked grebes with chicks
 Sandhill crane
 Spotted sandpiper

Water Level:

High

Water Color:

Light green
 Grayish

Algae:

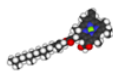
None to sparse

Aquatic Plants:

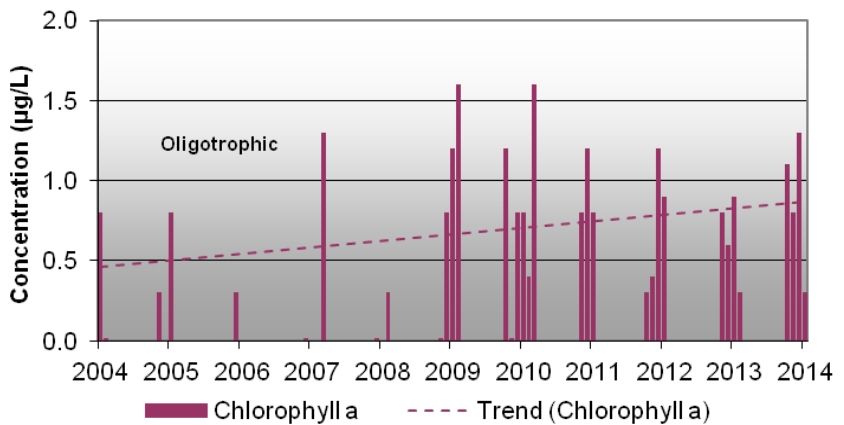
None to sparse; emergent grasses and floating water lilies; along the shoreline.

Additional Comments:

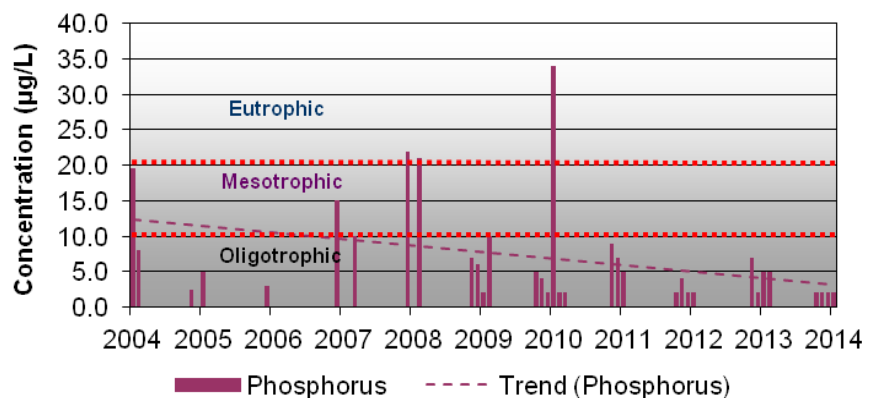
Water level at its highest in years in May, down six inches by August.



Florence Lake • Chlorophyll a 2004-2014



Florence Lake • Phosphorus 2004-2014



Florence Lake Profile Measurements

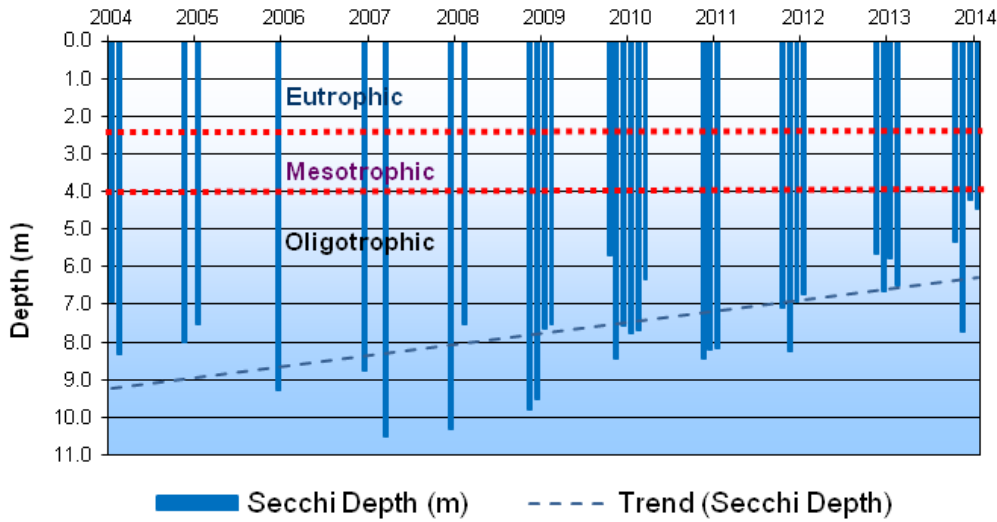
Florence		Depth (m)	Temperature (oC)	Conductivity (mS/cm)	Dissolved Oxygen (mg/L)	pH (SU)	Secchi Depth mean (m)	
Date	8/20/2014	0.0	18.05	0.018	9.08	8.08	4.48	
		1.0	18.05	0.018	8.96	7.96		
Site Depth (m)	10.10	2.0	18.04	0.018	8.67	7.88		
		3.0	18.03	0.018	8.92	7.81		
Phosphorus (µg/L)	2.0	4.0	18.02	0.018	8.95	7.77		
		5.0	18.01	0.018	8.93	7.73		
Chlorophyll a (µg/L)	0.3	6.0	17.98	0.018	8.88	7.70		
		7.0	17.92	0.017	8.82	7.67		
		8.0	16.10	0.018	10.43	7.59		
		9.0	13.17	0.018	10.09	7.53		
		10.0	12.24	0.018	8.13	7.42		
Date	7/29/2014	0.0	18.18	0.018	9.02	8.18	4.23	
		1.0	18.23	0.018	8.84	7.96		
Site Depth (m)	9.50	2.0	18.24	0.017	8.95	7.92		
		3.0	18.23	0.017	8.89	7.89		
Phosphorus (µg/L)	2.0	4.0	18.22	0.018	8.95	7.85		
		5.0	18.23	0.018	8.90	7.82		
Chlorophyll a (µg/L)	1.3	6.0	18.20	0.017	8.84	7.82		
		7.0	17.77	0.017	8.97	7.80		
		8.0	13.85	0.017	10.66	7.79		
		9.0	11.99	0.017	10.05	7.76		
Date	6/28/2014	0.0	15.96	0.017	10.83	7.92	7.70	
		1.0	15.90	0.017	10.03	7.59		
Site Depth (m)	10.50	2.0	15.79	0.017	9.93	7.51		
		3.0	15.68	0.017	9.98	7.39		
Phosphorus (µg/L)	2.0	4.0	15.55	0.017	9.93	7.32		
		5.0	15.43	0.017	9.95	7.26		
Chlorophyll a (µg/L)	0.8	6.0	15.33	0.017	9.93	7.20		
		7.0	12.55	0.017	11.17	7.16		
		8.0	11.19	0.017	11.30	7.10		
		9.0	9.54	0.017	10.32	7.00		
		10.0	9.24	0.017	9.62	6.95		
Date	5/30/2014	0.0	12.31	0.017	11.24	7.64	5.35	
		1.0	12.32	0.017	11.01	7.34		
Site Depth (m)	9.50	2.0	12.31	0.017	10.95	7.21		
		3.0	12.30	0.017	10.88	7.07		
Phosphorus (µg/L)	2.0	4.0	12.29	0.017	10.91	6.99		
		5.0	11.54	0.017	11.06	6.92		
Chlorophyll a (µg/L)	1.1	6.0	9.97	0.017	11.19	6.88		
		7.0	9.09	0.017	11.08	6.87		
		8.0	8.49	0.017	10.92	6.84		
		9.0	7.77	0.017	10.48	6.79		
ChIA	TP	Depth	T°	Cond	DO	pH	Secchi	
1.3	2.0	10.50	18.24	0.018	11.30	8.18	7.70	Max
0.3	2.0		7.77	0.017	8.13	6.79	4.23	Min
1.0	2.0		15.62	0.017	9.94	7.59	4.91	Med
0.9	2.0		14.70	0.017	9.87	7.50	5.44	Ave
0.4	0.0		3.36	0.000	0.94	0.40	1.58	StDev

Highlighted data does not meet Alaska Water Quality Standards (WQS)

The Alaska Water Quality Standards do not apply absolutely to lakes without taking multiple factors into account. For more information on WQS, please see <http://www.dec.state.ak.us/water/wqsar/wqs/>.

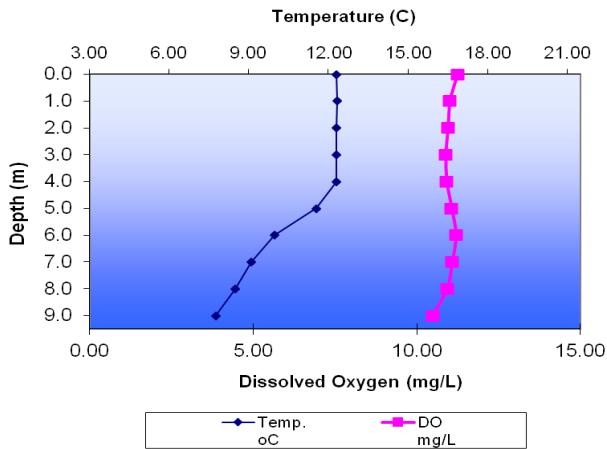


Florence Lake • Secchi Data 2004-2014

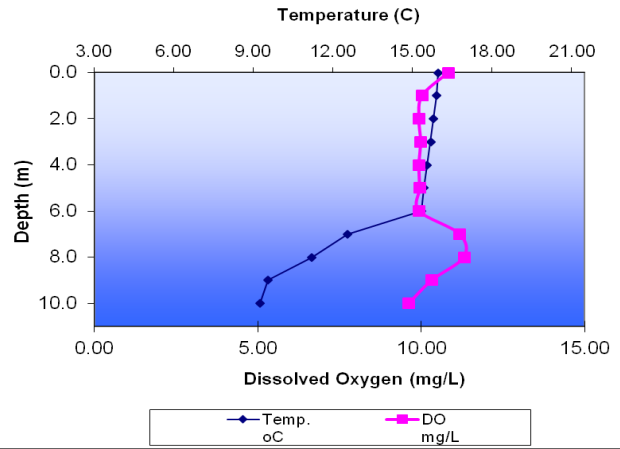


Spotted sandpiper

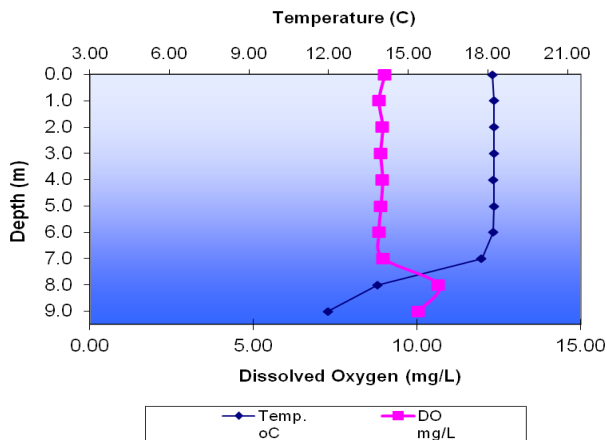
Temperature and Dissolved Oxygen Profile Florence Lake -- May 2014



Temperature and Dissolved Oxygen Profile Florence Lake -- June 2014



Temperature and Dissolved Oxygen Profile Florence Lake -- July 2014



Temperature and Dissolved Oxygen Profile Florence Lake -- August 2014

