

Little Question Lake 2014 Data Summary

Little Question Lake Snapshot

Years Monitored: 14
 Total # of Events: 29
 2014 Events: 3
 Total Hours Monitored: 60.5



Observations

Wildlife Observed:

Kingfisher
 Loons
 Small fish jumping

Water Level:

High, then medium

Water Color:

Light green
 Yellow/light tan

Algae:

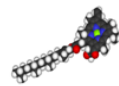
None to Sparse

Aquatic Plants:

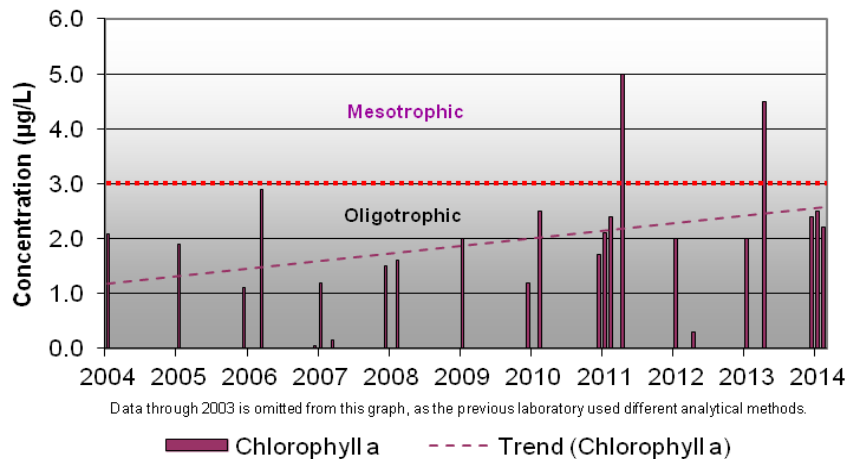
Sparse; floating lily pads;
 NE and SE shorelines.

Additional Comments:

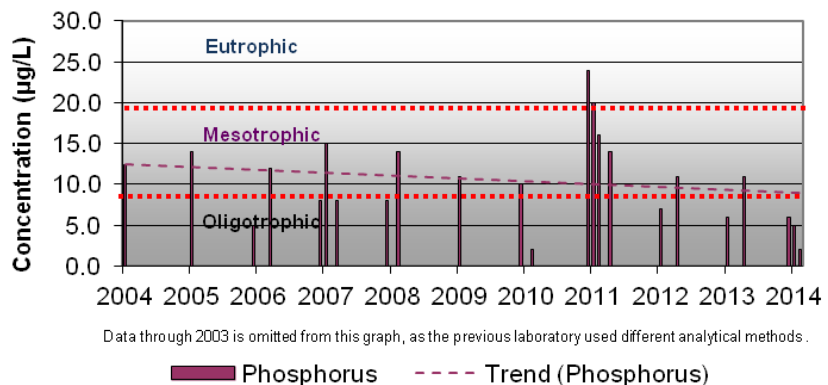
Blobs of thin light green algae observed in August.



Little Question Lake • Chlorophyll a 2004-2014



Little Question Lake • Phosphorus 2004-2014



Little Question Lake Profile Measurements

Little Question		Depth (m)	Temperature (oC)	Conductivity (mS/cm)	Dissolved Oxygen (mg/L)	pH (SU)	Secchi Depth mean (m)	
Date	8/27/2014	0.0	15.16	0.062	10.22	8.08	3.67	
		1.0	15.17	0.062	10.25	8.02		
Site Depth (m)	15.20	2.0	15.07	0.062	10.00	7.99		
		3.0	14.67	0.069	10.44	7.95		
Phosphorus (µg/L)	2.0	4.0	13.65	0.081	10.64	7.93		
		5.0	10.34	0.110	7.63	7.87		
Chlorophyll a (µg/L)	2.2	6.0	7.74	0.120	1.11	7.71		
		7.0	6.18	0.127	0.19	7.58		
		8.0	5.77	0.131	0.14	7.51		
		9.0	4.47	0.171	0.09	7.33		
		10.0	4.16	0.170	0.09	7.31		
		15.0	4.02	0.972	0.08	6.77		
Date	7/23/2014	0.0	18.78	0.056	9.59	7.44	3.22	
		1.0	18.39	0.057	9.94	7.48		
Site Depth (m)	15.60	2.0	17.82	0.057	9.74	7.50		
		3.0	16.28	0.063	11.25	7.58		
Phosphorus (µg/L)	5.0	4.0	11.84	0.088	12.09	7.76		
		5.0	9.16	0.104	8.59	7.65		
Chlorophyll a (µg/L)	2.5	6.0	7.51	0.116	2.50	7.49		
		7.0	5.83	0.125	1.25	7.36		
		8.0	5.08	0.139	0.25	7.20		
		9.0	4.36	0.164	0.14	7.04		
		10.0	4.31	0.166	0.15	7.01		
		15.0	4.25	0.957	0.15	6.66		
		15.5	4.26	1.040	0.05	6.63		
Date	6/20/2014	0.0	15.59	0.055	11.33	8.11	3.75	
		1.0	15.26	0.055	11.00	7.94		
Site Depth (m)	14.10	2.0	14.77	0.055	10.90	7.83		
		3.0	13.22	0.060	12.85	7.86		
Phosphorus (µg/L)	6.0	4.0	8.95	0.083	14.00	8.15		
		5.0	7.30	0.096	11.92	8.01		
Chlorophyll a (µg/L)	2.4	6.0	6.04	0.113	3.96	7.55		
		7.0	5.42	0.123	0.35	7.31		
		8.0	4.36	0.154	0.22	7.12		
		9.0	4.23	0.164	0.46	7.05		
		10.0	4.22	0.165	0.17	7.03		
		11.0	4.19	0.164	0.12	7.03		
		12.0	4.18	0.167	0.17	7.03		
		13.0	4.19	0.180	0.16	7.00		
ChIA	TP	Depth	T°	Cond	DO	pH	Secchi	
2.5	6.0	15.60	18.78	1.040	14.00	8.15	3.75	Max
2.2	2.0		4.02	0.055	0.05	6.63	3.22	Min
2.4	5.0		7.30	0.116	2.50	7.50	3.67	Med
2.4	4.3		9.13	0.177	5.24	7.48	3.54	Ave
0.2	2.1		5.10	0.242	5.26	0.43	0.29	StDev

Highlighted data does not meet Alaska Water Quality Standards (WQS)

The Alaska Water Quality Standards do not apply absolutely to lakes without taking multiple factors into account. For more information on WQS, please see <http://www.dec.state.ak.us/water/wqsar/wqs/>.

Matanuska-Susitna Borough Volunteer Lake Monitoring Program

