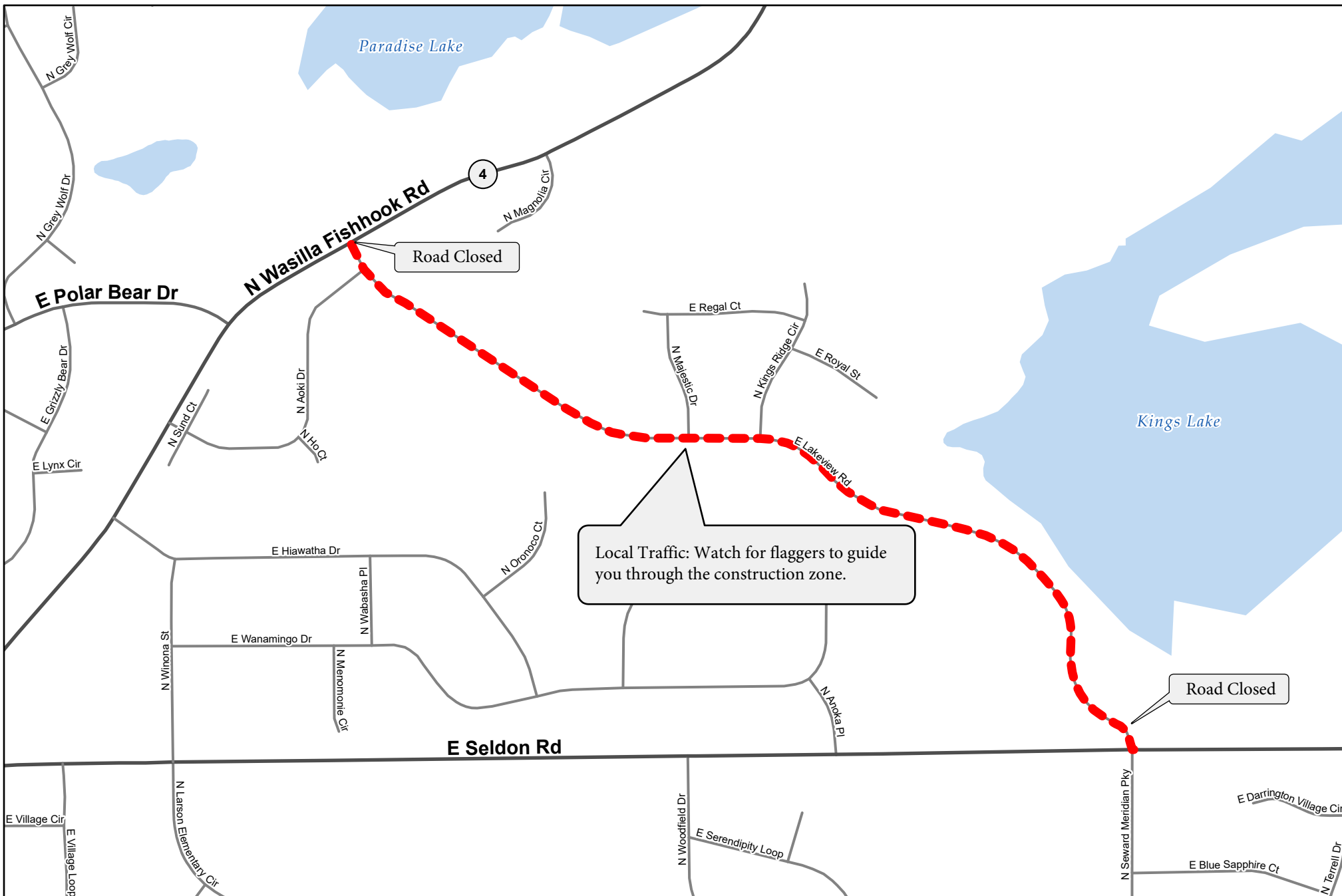


Path: P:\User\Planning\Transportation\Road_Closures\Road_Closures.aprx



Project Location Map

E Lakeview Rd

Pavement Preservation Project

Map Produced by MSB Development Services: 9/18/2025

Expect road closure Monday - Friday 7:00 a.m. - 7:00 p.m.
from September 9, 2025 - October 15, 2025
Contact John Klotunowitch (907) 232-5726
or Vivian Weaver (907) 354-8484

This map is solely for informational purposes only. The Borough makes no express or implied warranties with respect to the character, function, or capabilities of the map or the suitability of the map for any particular purpose beyond those originally intended by the Borough. For information regarding the full disclaimer and policies related to acceptable uses of this map, please contact the Matanuska-Susitna Borough GIS Division at 907-861-7858.

