



MATANUSKA-SUSITNA BOROUGH
Community Development
Land & Resource Management Division
350 East Dahlia Avenue
Palmer, Alaska 99645

MATANUSKA-SUSITNA BOROUGH
PUBLIC NOTICE

Type: Public Utility Easement (MSB008236)

Tax ID: 58386000T00H

The Matanuska-Susitna Borough, Land & Resource Management Division has received an application from Matanuska Electric Association (MEA) requesting a 20’ wide public utility easement on a Borough-owned property known as Tract H, Alaska State Land Survey No. 2002-001, Plat 2023-53 (tax account number 58386000T00H). This property is the location of Skeetawk Alpine Ski Area. At the request of Skeetawk, MEA plans to install a primary electric utility service line to the ski lift for operations.

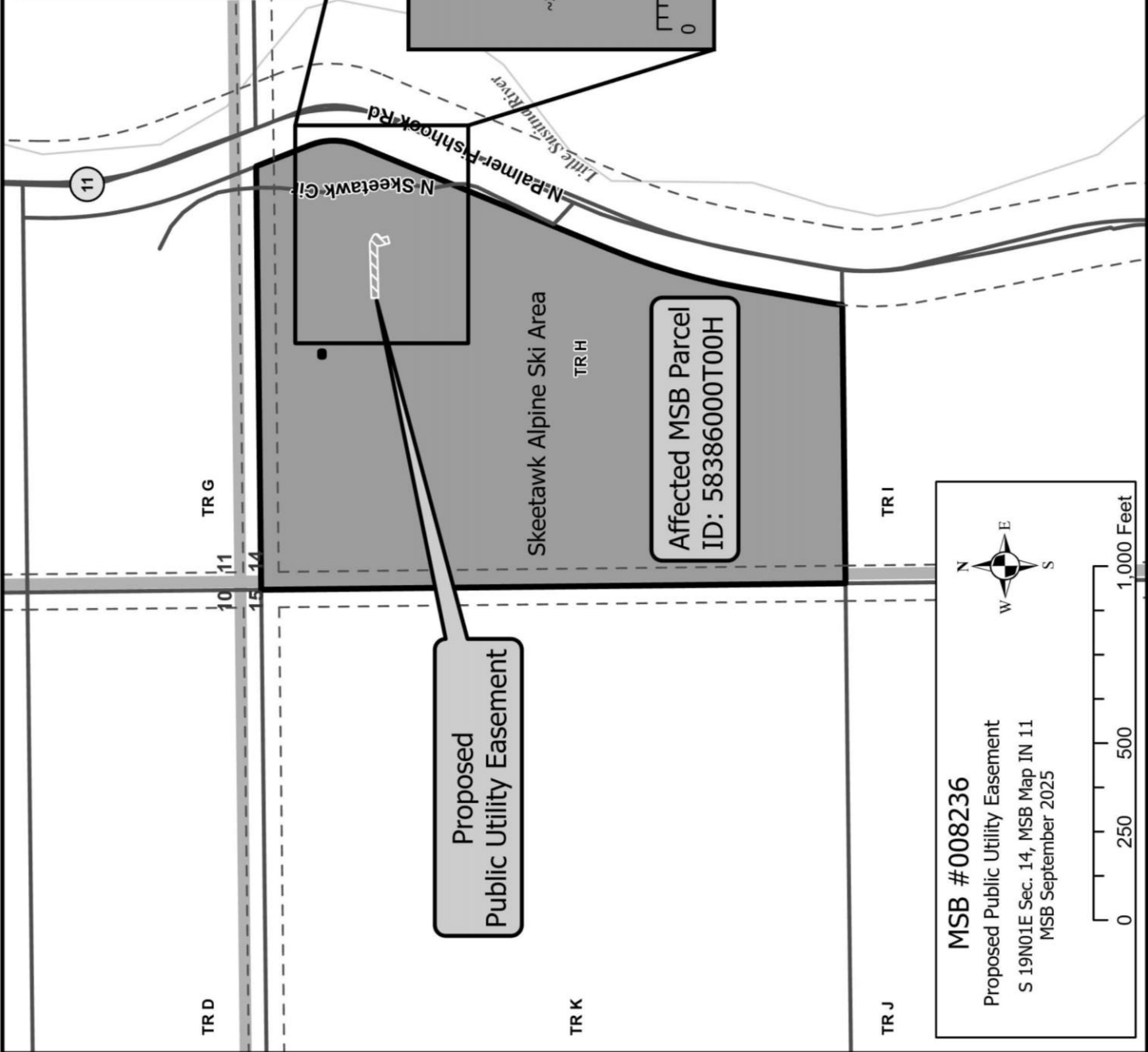
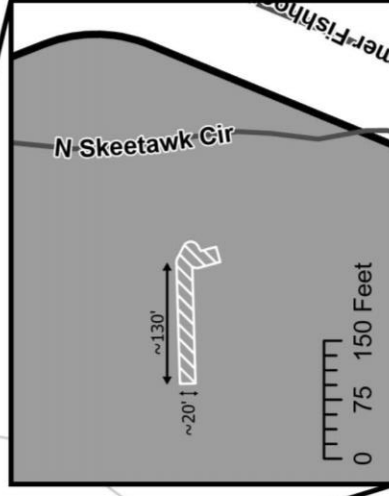
Supporting material is available for public inspection by appointment only during normal business hours on the 2nd floor of the Borough Building in the Land & Resource Management office or visit the Public Notice Section on the Borough’s web page, www.matsugov.us. Public comment is invited on this request. If you have any comments please mail or deliver them to the Borough offices at the address indicated above, no later than **October 20, 2025**. If you have questions about this request or would like to schedule an appointment to view supporting materials, call Lisa Gray at 907-861-7848 between 8 am - 5 pm or you can send an e-mail to: LMB@matsugov.us (please refer to **MSB008236 Proposed Public Utility Easement / Skeetawk when submitting comments**).

Comments: _____

Signature: _____

(If you need more space for comments please attach a separate sheet of paper.)
*This public notice & request for comments is in compliance with MSB Code 23.05.025

VICINITY MAP



MSB #008236

Proposed Public Utility Easement

S 19N01E Sec. 14, MSB Map IN 11

MSB September 2025