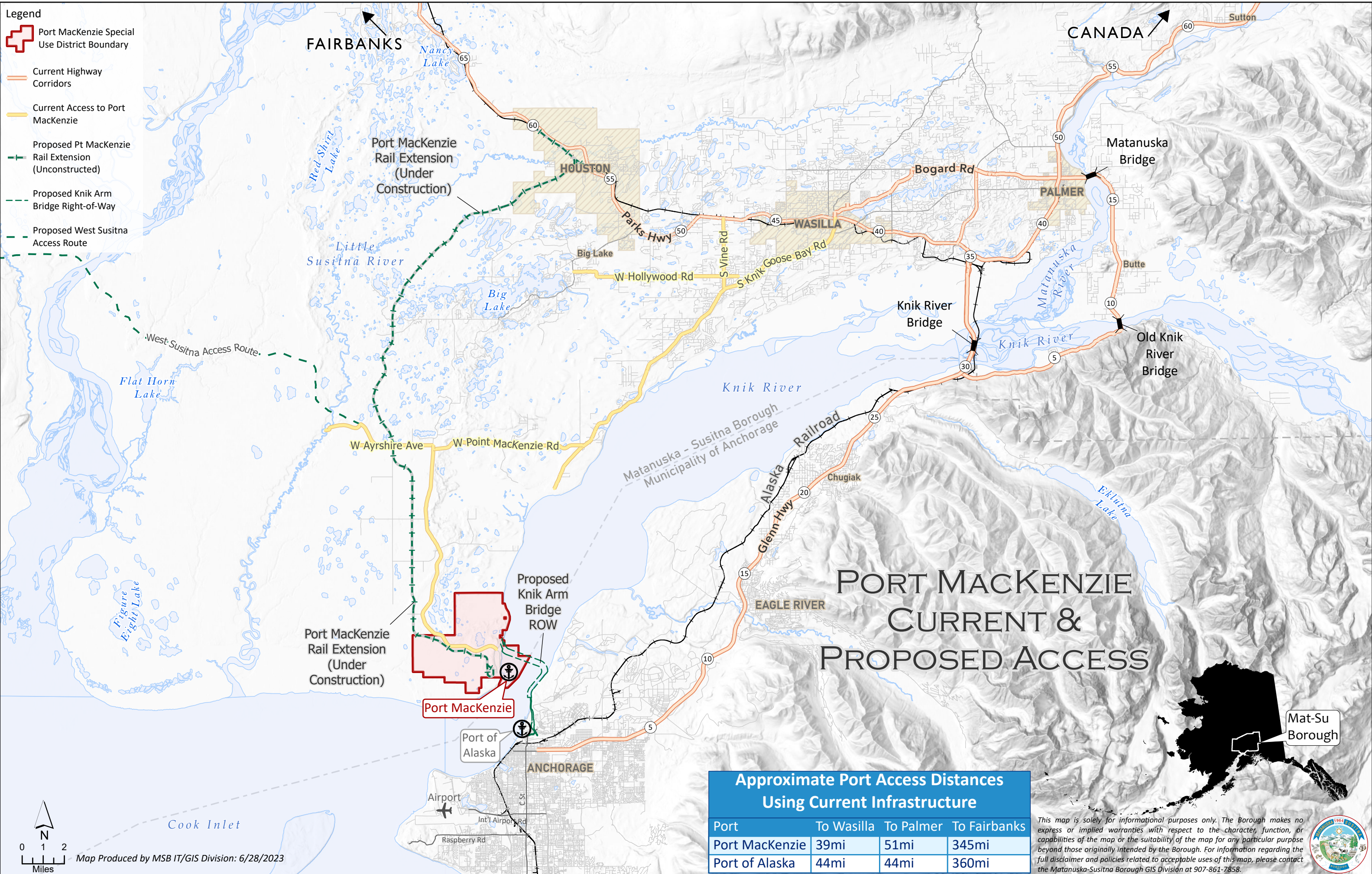


- Legend**
- Port MacKenzie Special Use District Boundary
 - Current Highway Corridors
 - Current Access to Port MacKenzie
 - Proposed Pt MacKenzie Rail Extension (Unconstructed)
 - Proposed Knik Arm Bridge Right-of-Way
 - Proposed West Susitna Access Route



PORT MACKENZIE CURRENT & PROPOSED ACCESS

**Approximate Port Access Distances
Using Current Infrastructure**

Port	To Wasilla	To Palmer	To Fairbanks
Port MacKenzie	39mi	51mi	345mi
Port of Alaska	44mi	44mi	360mi

This map is solely for informational purposes only. The Borough makes no express or implied warranties with respect to the character, function, or capabilities of the map or the suitability of the map for any particular purpose beyond those originally intended by the Borough. For information regarding the full disclaimer and policies related to acceptable uses of this map, please contact the Matanuska-Susitna Borough GIS Division at 907-861-7858.



0 1 2 Miles

Map Produced by MSB IT/GIS Division: 6/28/2023

