



MATANUSKA-SUSITNA BOROUGH

Office of the Borough Manager

350 East Dahlia Avenue • Palmer, AK 99645

Phone (907) 861-8689 • Fax (907) 861-8669

Mike.Brown@matsugov.us

MEMORANDUM

DATE: February 7, 2024
 TO: Mayor and Assembly
 FROM: Michael Brown, Borough Manager
 RE: Manager's Weekly Post

Fish Passage Projects Funding Status:

Recently, there was a discussion about the Borough's Fish Passage program efforts. I am sharing the various fish passage-related opportunities the Borough is pursuing and an overview of recent funding received via this program.

Grant	Grant Description	Fish Passage Projects
USFWS 2020-2025	This is a 5-year term grant with annual appropriations that vary depending on the USFWS's budget	Completed: Hidden Hills on Caswell Cr. 2 roads on O'Brien Cr., In Design: Settler's Bay Drive @ Crocker Cr. Homebuilt Circle @ Neklason Lake
USFWS NFPP BIL	BIL funds for barrier removal, such as culverts; nationwide competitive grant	MSB submitted an application but was not awarded a grant
USFWS NFHP 2023 (Mat-Su)	Small grants through the local fish habitat partnership. \$30k awarded in 2023 and added to grant budget for 2020-2025 grant.	Homebuilt Cir @ Neklason Lake
AKSSF 2021	ADF&G administered NOAA funds as an annual program. Requires 35% match. Accepted and Appropriated	Settler's Bay @ Crocker Creek
AKSSF 2022	Received grant, accepted, and appropriated	Homebuilt Circle Lynda Lake
AKSSF 2023	Received notification of award and waiting for draft agreement.	Fern Street @ Cottonwood Cr Sushana Dr @ Little Su tributary
AKSSF 2024	Applications are due in May 2024. Survey completed in 2023.	Kings/Anderson Lakes @ Cottonwood Creek
FHWA 2023	Aquatic Organism passage. Partnership with Knik Tribe and the City of Houston. 100% federal funds. Awaiting FHWA appropriation and agreement with the tribe.	3 culverts in City of Houston

NOAA PCSRF 2024	Pacific Coast Salmon Recovery Fund. Partnering with Chickaloon tribe. Grant application due March 4, 2024	3 culverts, Oceanview Drive and Samovar Way, private driveway @ Wasilla Cr. tributary
-----------------	---	---

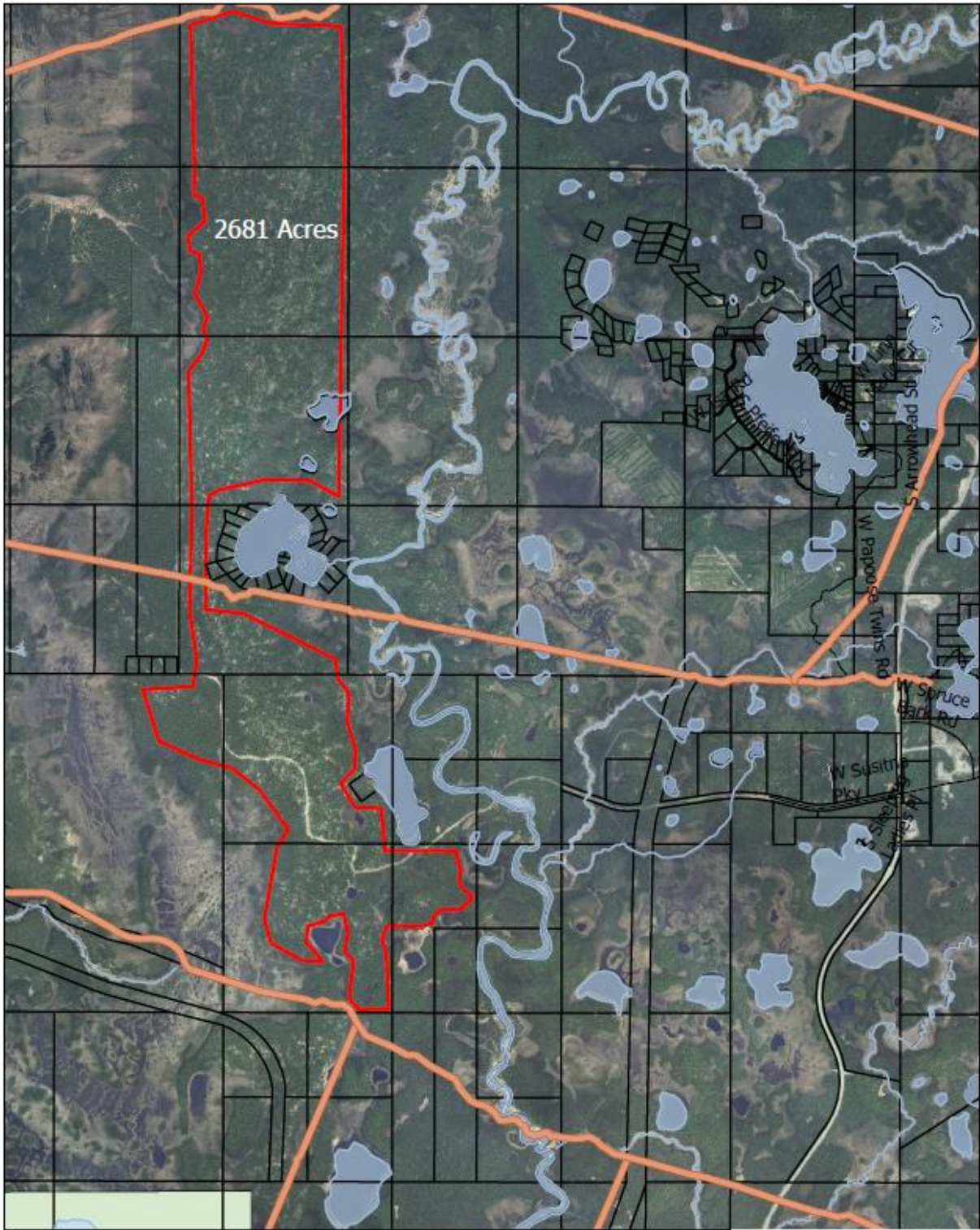
House Bill 255, Regional Port Authority:

Representative McCabe provided testimony on February 6 to the House Transportation Committee on his bill to create a Port of Southcentral Alaska Authority, including the Port of Alaska and Port MacKenzie: <https://www.ktoo.org/video/gavel/house-transportation-committee-2024021062/?eventID=2024021062>

Timber Harvest:

At the February 7 Assembly meeting, there was a brief discussion about a potential 1,000-acre timber harvest. A timber operator approached the Borough in January 2024 about the possibility of a 1,000-acre Borough timber harvest contract that would take place over 10 years. Their proposal was to harvest 100 acres per year for 10 years. The goal is to establish a long-term supply of timber. A cursory evaluation of Borough forestland indicated at least two potential locations where such a harvest could take place. The below map illustrates how a large acreage harvest could be laid out in the Fish Creek unit of the MSB’s [Natural Resource Unit Management Plan, https://matsugov.us/docs/general/16328/NRMU_Plan_Update_Complete_October2019.pdf](https://matsugov.us/docs/general/16328/NRMU_Plan_Update_Complete_October2019.pdf).

About 2,000 acres of Borough commercial forestland lies on the west side of the Little Susitna River, southwest of Big Lake. A large acreage timber harvest has been offered in the Fish Creek area over the last few years. Access is currently restricted to winter only because there is no bridge over the Little Susitna River in the area. Alaska State Forestry cleared several miles of winter ice road in 2014 in support of timber harvest at this location. Staff hope to bring a large acreage, long-term timber harvest before the Assembly in the next few months.





Moraine Ridge
Proposed timber boundary

0 0.25 0.5 1 Miles
 |-----|-----|-----|-----|

Legend



-  Trails
-  Timber Sale Boundary

Public Affairs Media Flyover:

Roads

- Construction on 2 heavily traveled Glenn Hwy bridges could begin as soon as this summer

Alaska's News Source

Arctic Winter Games

- Passport Delays jeopardize Nunavut athletes' Arctic Winter Games
- Service Canada sets up task team to help Nunavut AWG athletes with passports

CBC News

CBC

Education

- ACLU Sues School District for bathroom access for Transgender Students
- Lawsuit contends that Transgender bathroom ban violates Alaska Constitution
- Alaska's first veterinary technician degree program is coming to Mat-Su
- Stagnant funding results in Alaska Pre-K school closure

Alaska's News Source

ADN

AND

Alaska Beacon

Fisheries

- State weighs in on Federal Management of EEZ
- Public comment open for Upper Cook Inlet Board of Fisheries meeting
- No- Farm Farm (Salmon Farming in Alaska and the cost to natural stocks)

Homer news

Homer news

Craig Medred

Local Heros

- Local Mat-Su Legion remembers the Four Chaplains of WWII

Alaska News Source

Outdoor Recreation

- Susitna Recreation Draft Report
- A new crowdsourced map for dog owners shares trapline locations around Alaska

KTNA

ADN

State Legislature

- House Transportation Committee

KTOO