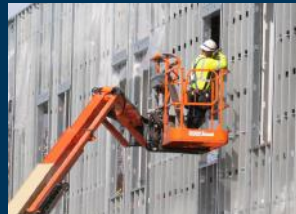




2022 Performance Report



*Dedicated to being the greatest community in
Alaska to **live**, **work** and **play***

STRATEGIC FOCUS



**ECONOMIC
GROWTH AND
DIVERSIFICATION**



www.matsugov.us



**DELIVERING HIGH
QUALITY SERVICES**



facebook.com/MatSuBorough



**MANAGING
GROWTH**



[Twitter@MatSuBorough](https://twitter.com/MatSuBorough)



Youtube.com/matsuborough



Meet the Mayor and Assembly



Edna DeVries
Borough Mayor



Rob Yundt
District 4



Tim Hale
District 1



Mokie Tew
District 5



**Stephanie
Nowers**
District 2



Jesse Sumner
District 6



Dee McKee
District 3



Ron Bernier
District 7



Economic Growth & Diversification



Supporting economic development opportunities and
evaluating barriers to growth



Arctic Winter Games March 10 - 16, 2024

A week-long arts, culture, and multi-sport event celebrating Arctic Nations and their communities

This is the first time the Matanuska-Susitna Valley will host the Games. The Mat-Su 2024 Arctic Winter Games Host Society is the non-profit organization planning and running the Games. The Chickadee is our Animal Ambassador to the Games. As the story goes, when you are walking in the woods and see a chickadee, you know that a friend is thinking about you. The Host Society is dedicated to ensuring that all participants know they are amongst friends when they come to Alaska.



The Arctic Winter Games includes building, planning, and executing a week-long schedule of sporting competitions, cultural programming, educational, and community outreach, performances, and ceremonies. The Host Society's responsibility includes housing, feeding, transporting, and supporting 2,100 international participants, their coaches, and staff while providing world-class hospitality.

The Host Society is in full planning mode with staff who have secured hundreds of partnerships with local organizations, venues, coaches, sports experts, artists, musicians, volunteers, and donors. However, we still have a long way to go in finding an additional 2,000 volunteers to support the event and raising an additional \$4 million to deliver a world-class sporting, arts, and cultural program. Signing up to volunteer and donating has never been easier: find us at: www.awg2024.org



The potential economic impact of this event is unlike anything Mat-Su has seen previously. The draw of 5,000+ spectators to our area during what is normally a lull in tourism traffic has the potential to provide an enormous boost to local businesses of all sizes.



Economic Growth & Diversification

Supporting the development of Hatcher Pass & tourism opportunities

Government Peak Recreation Area is the most popular recreational area in the MSB



The Government Peak Recreational Area (GPRA) and Skeetawk have quickly become a destination draw for Borough residents and visitors alike. With the assistance of volunteer organizations, the MSB continues to maintain and develop recreational opportunities in GPRA.



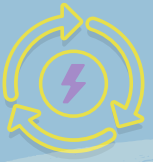
- 12,000 users** experienced GPRA in June of 2022
- Over 10.5 miles** groomed Nordic ski trails
- 8 miles** mountain bike trails
- 10 miles** pedestrian trails
- 2.5 miles** pack and saddle trails



Photo courtesy of Skeetawk's Facebook page

Skeetawk

The MSB continues to support the efforts of Hatcher Alpine Xperience, the not-for-profit organization that manages Skeetawk, a skiing, snowboarding and alpine recreation facility in Hatcher Pass. In 2022, the MSB provided a \$600,000 grant to support the ongoing development efforts at Skeetawk.



C-PACE

Commercial Property Assessed Clean Energy Program

September 27, 2022

The Borough Assembly unanimously adopts the Commercial Property Assessed Clean Energy program into Borough Code

C-PACE is a financing tool for improving commercial buildings with energy efficiency measures or renewable energy systems. Unlike conventional construction loans, C-PACE is designed to work specifically with the unique needs and barriers of financing building improvements, including longer loan terms, off-book debt, and repayment that transfers with the sale of property, just as the savings generated by the building improvements. Debt associated with making the improvements is repaid via a line item on local tax assessments. The MSB is the second municipality in Alaska to adopt this program! Staff are working with a consultant to update the C-PACE handbook before property owners can apply for the program in the Mat-Su. This effort is scheduled to be completed in the spring of 2023.

More information can be found at the statewide C-PACE website:

<https://www.akenergyauthority.org/What-We-Do/Grants-Loans/Alaska-C-PACE>



Natural Resources

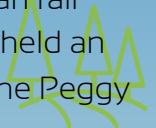
Gravel The Borough sold 10,720 cubic yards of gravel for both commercial and personal use.



Youth Shooting Range In May of 2022, the MSB Assembly conveyed 200 acres of Borough-owned land at less than fair market value to Alaska SCTP Non-Profit Corporation for the purposes for developing a youth shooting range. Since the official groundbreaking for the facility in May, Alaska SCTP Non-Profit Corporation is developing the property into a competitive shotgun range.



YMCA In November of 2022, the MSB Assembly approved a 131 acre land sale at less than fair market value to the YMCA, a non-profit organization. Prior to the land sale, the YMCA had held an active lease on the property for approximately the last 59 years. The property, known as, The Peggy Lake Residential Camp, is used as a seasonal youth resident camp for Alaskans.



Solar Power Project A groundbreaking ceremony was held in September of 2022 for the Houston Solar Farm. When the project is completed, the solar farm will produce 8.5 megawatts of power. The solar farm is located on Borough-owned property that has been leased to Renewable IPP. Renewable IPP has a 25-year agreement in place to sell the energy produced to Matanuska Electric Association. The solar project will help diversify energy sources and support price stabilization.



Gateway Visitor Center and MSCVB update

The Gateway Visitor Center is planned to start construction in 2023 with funding from the Economic Development Administration (EDA) along with Borough match funding. The center will serve as a hub for visitors and provide opportunity for economic development within the Borough.

Economic Growth & Diversification



\$104,219 - Wharfage
\$ 19,576 - Dockage
\$190,793 - Leases/Permits

31,243 - Tonnage
3 - Number of Vessels

Port MacKenzie

The Borough continues to develop new business opportunities at Port MacKenzie. The Borough seeks to make the Port a reliable option for the maritime industry operating in Cook Inlet. The Port was designed for deep-draft vessels, but use of the Port by smaller vessels is becoming more common. Plans are underway to construct a roll-on/roll-off barge ramp so smaller vessels can be brought onto shore for maintenance and retrofitting. Additionally, efforts are underway to acquire certifications that will allow the Port to handle fuel, ammunition, explosives, and other types of cargo. Maintenance of Port infrastructure is a priority and the MSB is in the process of placing pile sleeves on the deep-draft dock to protect the piles from corrosion and ice, funded by a Federal grant.



View the port brochure [here](#) or scan the QR code.





Economic Growth & Diversification

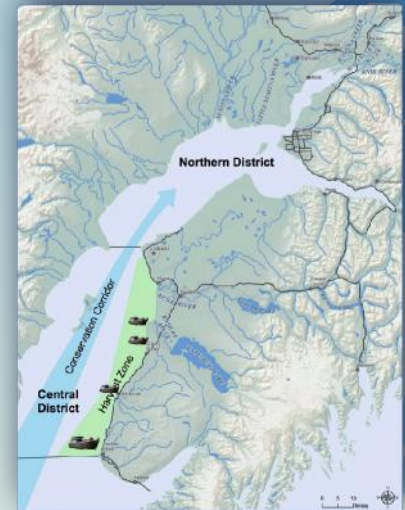


King and Silver Salmon are the economic drivers of Mat-Su sport fisheries

The Alaska Department of Fish and Game (ADF&G) numbers for salmon returns and the Mat-Su Borough Fish and Wildlife Commission's (FWC) perception vary slightly. It was not an excellent year for sportfishing in the MSB. Economic studies in 2007 and 2017 show the impact of sport fishing on the Mat-Su economy is significant, although declining as fishery returns ebb. In 2022, some salmon returns continued to struggle, most notably chinook salmon. The two personal-use fisheries in the Mat-Su did well, but fishing restrictions and summer floods impacted other fishing opportunities. Some stocks met escapement goals, while others didn't.

2022 takeaways:

- Several fishery weirs in the MSB were closed or shut down early due to ADF&G budget cuts, impacting in-season fishery management.
- Litigation regarding the North Pacific Fishery Management Council's closure of the Cook Inlet EEZ commercial fishery created uncertainty.
- The impact of bycatch and its possible effect on Mat-Su salmon returns became a discussion topic.
- ADF&G continued to manage the UCI salmon fishery conservatively.
- The "conservation corridor" concept that the FWC advocated for returned more salmon to UCI.
- Factors related to climate change may be impacting salmon returns.



Fish and wildlife resources continue to be important drivers to the high quality of life Mat-Su residents and visitors have come to expect. The FWC provides a forum for discussing important fish and wildlife issues such as fish habitat protection and restoration, the State's water reservation system, and moose management.

The FWC is gearing up to represent the Borough before the state Board of Fisheries and Board of Game in 2024. The FWC continues to provide expertise and public participation on fish and wildlife issues that matter to the Mat-Su.



DELIVER HIGH QUALITY SERVICES

Fish Passage Program

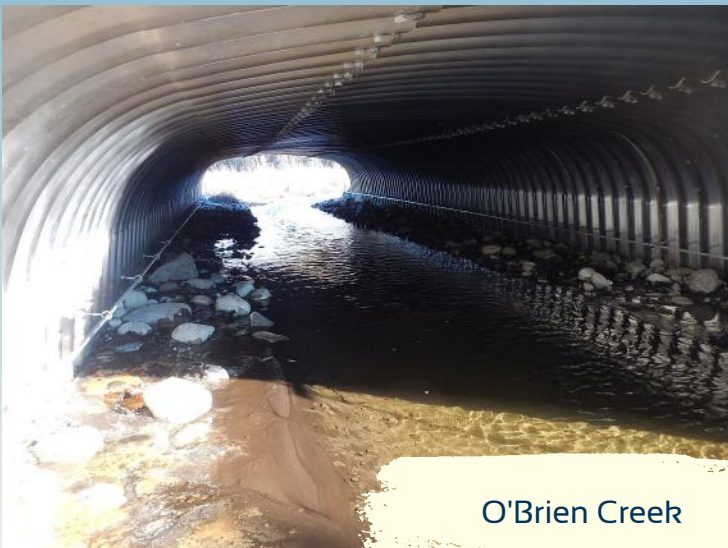


BEFORE

AFTER

Lucille Creek

The Borough has become a leader in fish-passage culvert design and improvements. To date, over 100 culverts have been replaced in the Borough with help from numerous partners such as the U.S. Fish and Wildlife Service, Alaska Dept. of Fish and Game, and many others that contribute staff time and funding aimed at replacing barriers that allow fish and other organisms to freely rear and migrate throughout their critically-needed habitat. In 2022, the Borough completed three fish passage culverts on Caswell Creek and O'Brien Creek with plans to complete two more on Crocker Creek and Birch Creek in 2023.



O'Brien Creek



Caswell Creek Pipe Installation



DELIVER HIGH QUALITY SERVICES

2022 Trail Report



Trail Crew offloading gravel at Settler's Bay Coastal Park



Settler's Bay Coastal Park Trail

The summer trail season of 2022 was one of the best in recent history, a lot of quality work was accomplished. An early season project for 2022 was to reinstall the trail counters. It was very informative to look at the incredible increase between the pre and post COVID trail usage. As an example, the July monthly use of the West Butte Trail went from 2,313 in 2018 to 4,421 in 2022. Much of the middle of the season was spent working at the new Settlers Bay Coastal Park. The Trail Crew completed approximately 1.4 miles of new intermediate level mountain bike single track.



New trail at Fish Lake and future Kids Don't Float board (Talkeetna)

A new view platform was also installed by contractors over the past winter and a lot of hand work was performed to finalize the project. Picnic tables, benches, fences, exclusion rocks, trash cans and dog waste stations were added as well.

Another exciting project was a new approximately half mile canoe portage trail at Fish Lake near Talkeetna at the request of the Talkeetna Parks Advisory Committee (TPAC). Despite very wet conditions, the trail was completed in two weeks.

The Trail Crew also replaced the Matanuska River Trail sign near Sherrod Elementary School in Palmer. This sign was damaged during the January wind storm. A new Matanuska River Trail sign was added in the Mat River Campground. Many smaller projects were also completed during the 2022 summer trail season.



DELIVER HIGH QUALITY SERVICES

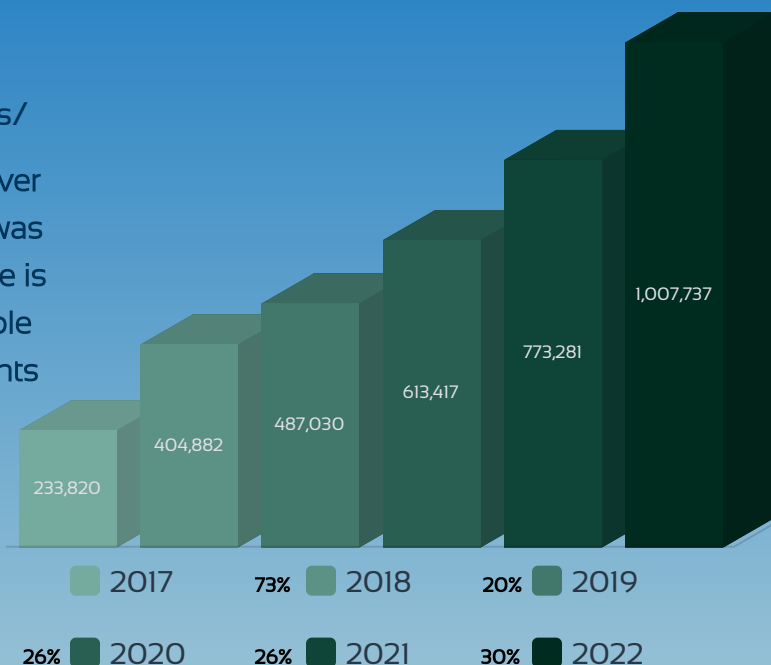
Recreational Usage

3,345 Annual trailhead passes sold 2,924 Northern region daily passes sold
 \$121,795 In annual trail pass revenue 891 Campground Visitors at Talkeetna
 16,855 Core Area daily passes sold 3,199 Campground Visitors at Mat River Park

E-COMMERCE

<https://ecommerce.matsugov.us/>

E-commerce revenue continues to grow year over year. In 2022, revenue crested \$1 million. This was a 30% increase over last year. MSB E-commerce is undergoing a redesign, which should be available in the first quarter of 2023. Property tax payments are also moving from the old system to a new system that will allow tax payers to look up current pay off amounts.



Problem Reporter

The Mat-Su Problem Reporter app allows the citizens of the Borough to report on four types of issues: abandoned vehicles, animal care, road maintenance, and trash in the right-of-way. The Mat-Su Problem Reporter makes reporting easier than ever and allows individuals to stay informed about issue resolutions in their area. The Problem Reporter just for road maintenance allowed 1,849 citizens to report, of the total 6,944 reports in 2022.

What kind of problems?



Trash in the Right-of-way Abandoned Vehicle Road Maintenance Animal Care

TRANSPORTATION 21

Over
45%

Population increase in the past two decades in the Mat-Su Borough

Nov. 2,
2021

Mat-Su Borough voters approve 20 projects in a \$61M transportation infrastructure improvement package



These projects represent important arterial and collector roads and pathway upgrades that contribute to better traffic flow, less congestion and better overall safety across the Borough

Funding has been allocated for the full amount without taking on additional debt obligations and all projects are under design.

Project	Estimated Date	Project	Estimated Date
Trunk Road Connector/ Katherine Dr.	2023	Engstrom Rd to Trunk Rd Corridor	2025
Smith Rd Ext Upgrade and Pathway	2024	Edgerton Parks Rd- Mountain Trails Dr Upgrade and Pathway	2024
Old Glenn Pathway Phase 2	2024	Caswell Lakes Rd Paving	2023
49th State Street Pathway	2024	Cheri Lake Dr/Karen Ave/King Arthur Dr	2023
Hemmer Rd Ext South	2024	Hidden Hills Rd Reconstruction	2023
Lakes Blvd Upgrade	2023	Palmer-Fishhook Separated Pathway	TBD
Point MaKenzie Rd Reconstruction MP 0-7	2024	Fern St Upgrade & Pathway	2024
Lucille St and Pathway Upgrade	2024	Seward Meridian Pkwy Traffic Signal	2025
Tex-Al Dr Ext, Upgrade and Pathway	2025	MSB School District Pedestrian Projects	2023
MSB School District Shaw Elementary Turn Lane	2024	Multi-Modal Wasilla Depot Land Acquisition	Complete



DELIVER HIGH QUALITY SERVICES



CONSTRUCTION & DEVELOPMENT

Houston High School

will be complete by spring break 2023 for students to utilize for the final semester of the school year. The contractor faced difficulties with material procurement and supply chain delays, but is on track to deliver the project.



Jonesville Public Use Area

The Borough continues to assist and monitor the AK Department of Natural Resources (DNR) planning process for the Jonesville Public Use Area. DNR has targeted June of 2023 for the completion of the process and plan. The MSB is eager to enter into a management agreement with DNR for the development and maintenance of the Jonesville Public Use Area.

Road Maintenance

1,154 miles of road currently under annual maintenance

\$4,400 - \$14,000 Varying costs per mile to maintain by road service area annually

9 miles of newly developed roads were accepted into maintenance:

7.3 miles paved and 1.7 miles of gravel road

24 road-related projects were completed, 9 miles of roads improved,

6 miles of road paved, 1 mile of paved pathway constructed

Road maintenance contractors performed remarkably during December back-to-back snow and wind events



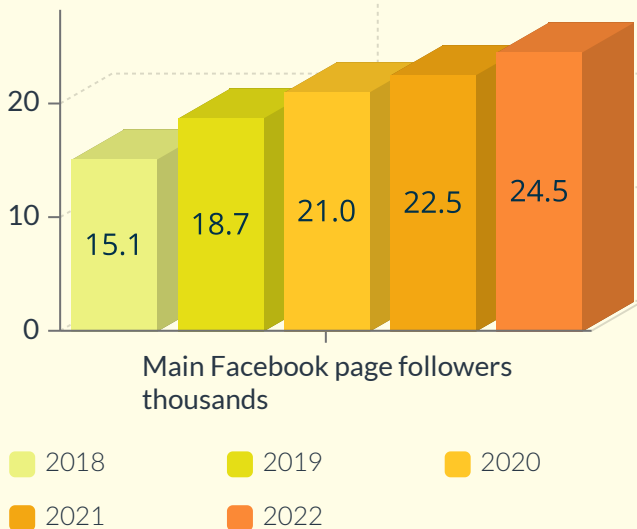


DELIVER HIGH QUALITY SERVICES

Effective communications with the public is key to an effective organization. Keeping the public informed develops trust that will bear fruit with more public involvement. The main MSB webpage (matsugov.us) plays a major role in this and acts as the communications hub for the Borough. Valuable services are provided here, such as: e-commerce, the parcel viewer, land sale info, public meeting schedules, agendas, public notices and the problem reporter application.

FACEBOOK MAIN PAGE reach was 572,448 in 2022 over the entire year, a 194% increase over 2021

5 DEPARTMENTS currently use 12 Facebook pages which brings the total MSB followers to 64.5k



The immediacy of the social media platform makes it an essential communication piece for the Borough. MSB Public Affairs has live streamed meetings on Facebook beginning late 2019. Since 2020, all Assembly meetings have been streamed on Facebook and YouTube, with the Planning Commission meetings added in 2021 and the Platting Board coming in 2023.

The use of photos, video and graphic design play a major role in communicating with the public and the media through presentations, social media, the web, and documents such as posters, flyers and booklets. No single tool has been more valuable than unmanned Aerial Systems (UAS) for capturing general imagery and even logistics support for natural disasters. During last November's visit in Willow by engineers from the US Corp of Engineers, CRREL division, credit was given to Public Affairs for their aerial imagery of the 2019 Ice Jam as the finest example of aerial imagery they had ever received for that type of event.



Willow Ice Jam 2019 (Photo by: Public Affairs)

ADF & G season ending fisheries meeting

was live streamed for the first time, educating the public on the state of fisheries in the Mat-Su and the critical management of that resource.



DELIVER HIGH QUALITY SERVICES

Capital Improvement Program (CIP)

A list of infrastructure projects based on citizen nominations and comprehensive plan priorities. In the past, any project nominated would make it into the CIP. To develop a list that the MSB is legally capable of executing, we developed changes to how projects qualify. Nominations are now accepted on a rolling basis, at any point in the year. August 1 will be the cut-off each year for evaluation and consideration for the upcoming fiscal year budget discussion. To be considered a valid CIP nomination, all projects must meet all five criteria as listed below:

- 1) Project must fall within current Borough powers as laid out by MSB Code, Title 1.10.
- 2) Project must align with a goal or objective of an Assembly-adopted plan.
- 3) Cannot be considered routine maintenance or equipment replacement.
- 4) Must have a useful life of 5 years or more.
- 5) Must have a single cost of \$20,000 or more.

The CIP Scoring Committee finalized the project list in September 2022. Five submissions to the program, and four projects met the criteria to be scored. The projects can be found in the CIP document here: <https://my.visme.co/v/epgo4om1-zrq9vy>. And more information can be found about the updated process on the project website: <https://cip.matsugov.us/>.

Planning and Land Use Viewer: In 2022, the Borough shared a new GIS-based tool to improve public interaction with MSB land use regulations. This tool helps residents to understand and comply with Borough code. This tool shows Special Use Districts, Lake Management Plans, and other Borough-regulated areas and provides the public with a web link to relevant information. The tool will be handy for anyone developing or purchasing land in the Borough and will help to manage growth through effective code compliance and communication.

The MSB Planning Department website received a facelift!

<https://planning.matsugov.us/>

The new page hosts a 'Hot Topics' section that features a rotating list of current news, projects, and planning updates. The site offers quick and easy access to the public's most frequent inquiries, including land use regulations, subdivision requirements, permit applications, mapping tools, complaint filing, and comprehensive Board & Commission resources.



DELIVER HIGH QUALITY SERVICES

The American Rescue Plan Act (ARPA) provided Federal funding to municipalities across the country. There are several restrictions on the uses for this funding and the Assembly appropriated funding for the following projects related to clean water:

- Big Lake, Butte and Snowshoe Elementary Water System Replacements - \$2,592,608
- Talkeetna Prefabricated Restroom - \$350,000
- Central Landfill Entrance Improvements - \$4,000,000
- Central Landfill Cell Development - \$2,040,000
- Central Landfill Leachate Management - \$600,000
- Talkeetna Water System Infrastructure Improvements - \$1,150,000
- Central Landfill Excavator and Shredder - \$1,119,673

Additional Federal funding was applied to:
The future Mat-Su Central School – \$3,400,000
Government Peak Recreation Area Parking Lot - \$500,000

The US Economic Development Administration (EDA) provided grant funding for two projects:
Port MacKenzie Dock Improvements - \$7,590,192
Gateway Visitor Center - \$6,696,030.

2022 Coordinated Human Services Transportation Plan (CHSTP) update: Federal law requires that projects selected for federal funding under the Enhanced Mobility for Seniors and Individuals with Disabilities (Section 5310) Program must be included in a locally developed, coordinated public transit-human services transportation plan. In 2017, MSB drafted its first CHSTP. 2022 marks the five-year horizon and to ensure that regional providers can access the Federal Transit Authority funding, the MSB is updating this Plan.

The CHSTP's purpose is to improve transportation options and access to services for Older adults (65 and older), Youth (ages 10 to 17), Individuals with Disabilities, those living in poverty, people with limited English proficiency, Tribal nations, and Veterans. Over the past year, MSB met with transit and health and human service providers to discuss the needs of riders and providers and to better understand gaps and needs within our public transit system.

Five themes emerged in our assessment of needs and gaps:



Regional transportation needs



Education and awareness



Coordination and collaboration



Access to key destinations



Funding communication

The draft plan was out for public comment in January 2023.

To review the draft document and the 2017 plan, please visit our CHSTP website.



SERVICE STATISTICS

Animal Care

2,800 Approximate animal intakes in 2022 as compared to just over 3,000 in 2021



4,672 Total number of hours of in-shelter volunteers

4,512 Total number of hours volunteers fostered animals



1,233
Adoptions



1,859 Enforcement calls

480 Stray animals returned to owners



Finance Accomplishments

The Borough received the Government Finance Officers Association (GFOA) Distinguished Budget Award for Fiscal Years 2022 and 2023.

The Borough also received the GFOA Certificate for Excellence for the Annual Comprehensive Financial Report (ACFR) for Fiscal Year 2021.

Our Finance team successfully processed the Assembly areawide tax rebate.

11,000 Approximate refunds over \$50 for accounts that had paid both first and second half payments prior to the application of the rebate the tax accounts.

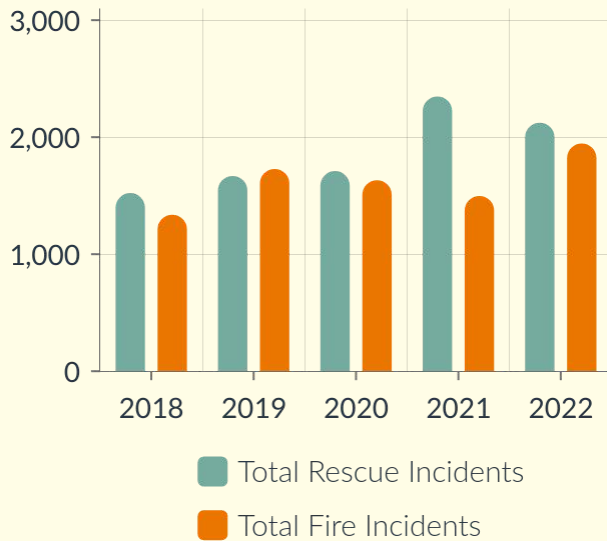
7,000 Accounts processed and mailed in December 2022, the largest refund batch.

\$11,948,300 Total Rebate

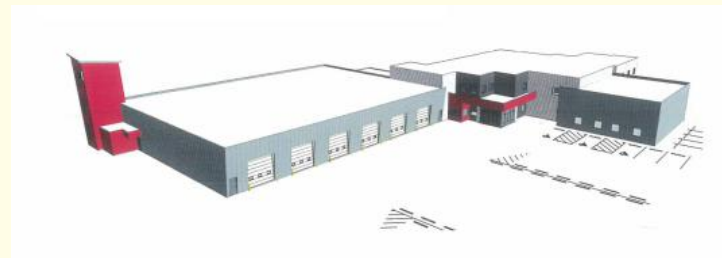


Managing Growth

Meeting Emergency Service Demands



Station 3-9 is planned for 2023 and 2024 construction and will serve as a combined EMS/Fire and Training facility for the Department of Emergency Services. The facility will be located at the Glenn Hwy & Marsh Rd. intersection near Palmer.



2022 was a very busy year for emergency services. The Borough was faced with multiple significant weather events that severely strained emergency services resources. Through wind events, blizzards, cold snaps and flooding, all calls were answered.

The operations tempo for EMS has **increased by 26%** over the past 5 years averaging **29 calls per day**.

WILDFIRE PREPAREDNESS

The Borough continues to perform fuel reduction work at schools, facilities and parks. Work was complete at 27 Borough facilities including schools and high use recreation sites this year. Fuel reduction work at the urban-wildland interface is commencing at high-risk locations in the core area.

400 cords of beetle-kill spruce firewood was permitted for harvesting on Borough lands. An additional **100 acres** of Borough forest was commercially salvaged for beetle-killed spruce and **130 acres** of commercial timber containing approximately **2,796 cords** of timber was sold.

ready.matsugov.us

Nature is Always Ready... Are You?

- 1 Make a Plan
- 2 Prepare an Emergency Kit
- 3 Emergency Notifications
- 4 Get Training

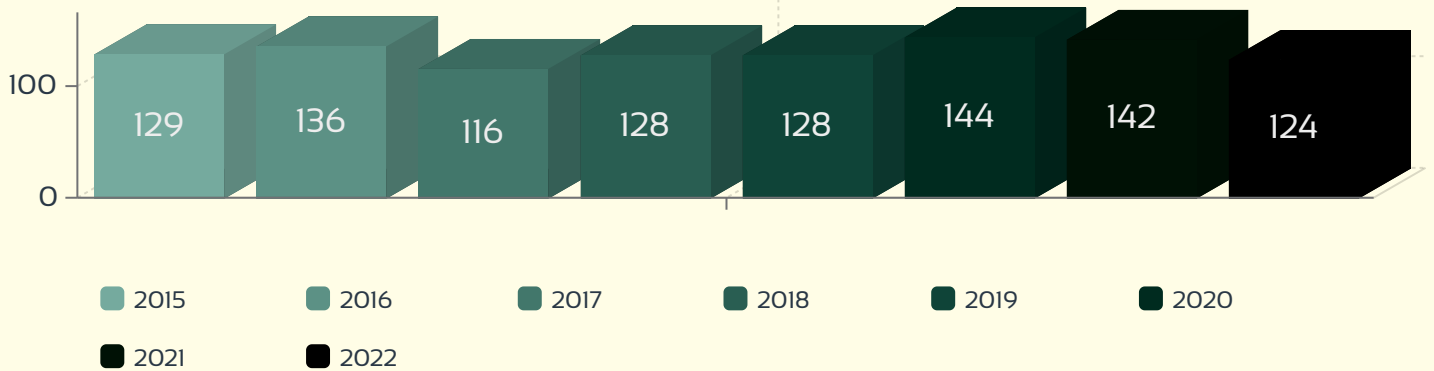


Managing Growth

According to the US Census, between 2010 and 2020 the population of the Matanuska-Susitna Borough consistently increased, with Mat-Su accounting for 78% of the statewide population growth

Subdivisions created over the years

Platting trends in terms of subdivision approvals compared to recent years

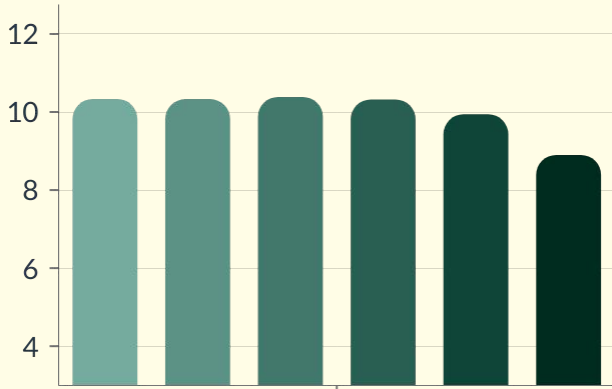


Commercial & Residential Construction Values

	No. of Units	Value	No. of Units	Value
	Residential		Commercial	
2010	547	86,668,220	37	19,010,480
2011	328	55,930,941	25	20,802,400
2012	447	80,165,700	70	33,097,400
2013	433	84,882,500	74	26,028,308
2014	475	99,735,100	101	39,675,000
2015	590	123,732,800	211	99,256,100
2016	542	120,329,500	252	104,608,300
2017	533	112,393,300	250	89,565,700
2018	629	124,037,900	235	79,831,600
2019	547	103,283,600	142	99,825,710
2020	658	119,446,000	148	73,036,950
2021	616	119,334,100	97	51,163,528
2022	671	164,221,700	80	30,467,300

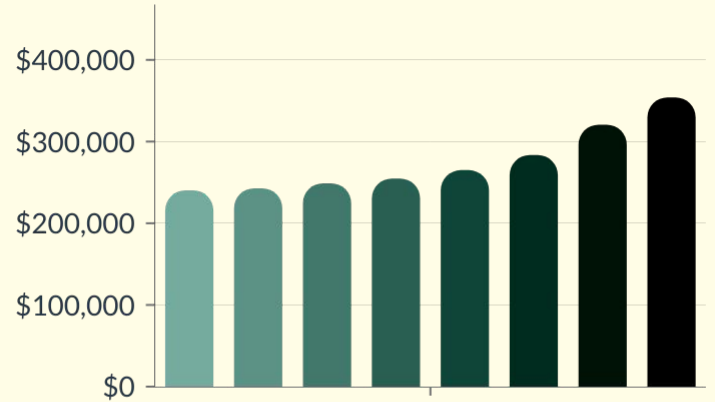


Managing Growth



2018 2019 2020 2021
2022 2023

Areawide Mill Rate



2016 2017 2018 2019
2020 2021 2022 2023

Average Appraised Value - Single Family Residential Home

Stormwater Management Program: The Stormwater Management Program is a requirement once a community receives an Urbanized Area designation. With the increase in population comes increased activity that has the potential to negatively impact our rivers, lakes, streams, and drinking water sources.

Municipal Separate Storm Sewer System (MS4) operators develop, implement, and enforce a program that will reduce the pollutants from stormwater from entering our lakes, rivers, streams and wetlands.

In anticipation of these upcoming regulations, an “MS4 and Stormwater Management” educational series was completed this past year. The MSB has also begun work on the required Stormwater Management Program (SWMP) document that outlines program activities to be implemented over the 5-year permit term. To learn more about the program activities, visit the project website at [Stormwater Management Program 2022](#).

The 2022 update of the Official Streets and Highways Plan (OSHP) was adopted in November 2022. The OSHP is a map that identifies future road corridors and road upgrades necessary to safely and efficiently accommodate our growing population and its transportation needs. By planning for our infrastructure, we can more efficiently use Borough tax dollars, reduce traffic congestion, promote roadway safety, and keep up with the infrastructure demands of development.





Managing Growth

Metropolitan Planning Organization (MPO) - Mat-Su Valley Planning for Transportation (MVP)



An MPO is a planning organization that develops plans for a local transportation system, including roads, transit, and bike and pedestrian facilities. The plans created by the MPO guide Federal transportation infrastructure investments.

All Urbanized Areas with a population over 50,000 must have an MPO to carry out a 3C (continuous, cooperative, and comprehensive) transportation planning process, as stipulated in the Federal Highway Act of 1962. The MVP for Transportation anticipates being formed by December 2023.

MSB is looking deeper into four rapidly developing sub-areas of the Borough:

The Fishhook Triangle, UMED/Matanuska Greenbelt, Bogard-Seldon Corridor, and the Knik Goose Bay-Big Lake area. The studies will identify transportation, land use, economic development issues and opportunities unique to each sub-area. These studies will prioritize needed infrastructure investments to meet development demands, but will also suggest comprehensive policy solutions to help manage growth and get ahead of future development. This plan is still in process, public input is encouraged, and it is anticipated to be presented for Assembly approval in fall 2023.

Live, Work & Play



The Borough-wide Comprehensive Plan update aims to supply a blueprint that will bring the MSB vision and the Assembly's strategic goal to preserve the qualities that attract people to live, work and play in the Mat-Su. The Comprehensive Plan is designed by communities through extensive and creative public outreach. The plan update will dive into the issues that work for and against MSB goals to develop an implementation plan that aims at reducing land use conflicts while promoting economic growth and overall quality of life for all.

Staff are developing a work plan and beginning initial outreach in early 2023. A website and completed work plan are on the way.

Bike and Pedestrian Plan

This will be the MSB's first Borough-wide Bike and Pedestrian Plan, or BPP. The BPP's purpose is to create a roadmap to a safer, better-connected bike and pedestrian network. The Plan will look for ways to develop new facilities and connections.

The project website is a useful tool to learn more about this Plan and how you can become involved!
www.matsubikeandped.com.





Managing Growth

SOLID WASTE

Funding approved by the Assembly from the American Rescue Plan will be used to build a new entrance and tipping facility at the Central Landfill, with new road construction beginning in 2023.

91,000 Tons of waste per year collected by the Solid Waste Division

64,000 Tons of Municipal Solid Waste (MSW)

20,000 Tons of Construction and Demolition waste (C&D)

14,000 tons or 18%.

Approximate increase at Central Landfill waste volume in 2022. The increase included 9,000 tons of MSW and 5,000 tons of C&D waste.

The new entrance will provide multiple entry lanes to improve traffic flow into and out of the landfill. This new area will allow more opportunity to create trash diversion programs such as making compost for reuse, creating a construction and demolition (C&D) reuse program, tire recycling/reuse, with additional space to add more creative diversion programs in the future.

After recently opening Cell 4, the Solid Waste Division is working on a design to increase the life of Cell 4 by up to 4 years. This design improvement along with working with community recycling and reuse groups, such as Valley Community for Recycling Solutions (VCRS), will extend the life of Cell 4 by adding disposal space, creating more recycling program opportunities and better increasing diversion.

Recycling

The MSB Solid Waste Division diverts recyclable waste from the landfill to save expensive lined cell space for refuse. This lengthens the useful life of landfill cells and reduces future development costs. Each ton diverted saves the landfill \$106 in airspace costs.

**In 2022 - 1,604 tons of material
2,059 tons of brush
2,820 tons of scrap metal**

Was diverted from the landfill by recycling efforts at VCRS, Big Lake, Central Landfill, Sutton, Talkeetna and Willow.

In 2023, the Solid Waste Division is exploring new diversion programs for tires, glass, and construction material, as well as developing a compost program from brush collected from the community.



Managing Growth

Leachate Management

The Central Landfill generates between 3 and 5 million gallons of leachate annually. As the landfill waste volume increases, the volume of leachate produced will continue to increase.

4.9 million gallons of leachate was disposed through Anchorage Water and Wastewater Utility (AWWU). Disposal by Central Landfill is permitted every 5 years with our next renewal in 2025. Environmental rules are changing making it more costly for AWWU to treat and accept leachate in the future. To mitigate this problem, the most effective method is to recirculate and eliminate the leachate here in the Borough using an evaporation/filtration method. Recirculation will reduce volume by 45% or more. The next step is to design and build an evaporation/filtration system. A request for proposals for design will be issued in early 2023. Expectation is to have a design completed by summer 2023 and to build a system in 2023-2024.

Community Clean-up

The Borough supported the Jim Creek Spring Clean-up. During this event, over 300 volunteers from the local community and several different user groups removed approximately 11,000 pounds of trash and debris from the Jim Creek Recreational Area. Additionally, the Borough supported a clean-up event at the Jonesville Public Use Area. Two 40-yard dumpsters that were filled to capacity by the volunteers from the local community and other user groups. In addition to the organized clean-up events, Community Development staff removed approximately 4,000 pounds of trash and discarded appliances from numerous sites around the Borough.

The Solid Waste Division conducted **62** Clean-ups collecting **174** Tons of material and removing **160** Abandoned vehicles from public rights-of-way

Ensure effective and efficient code compliance

Code compliance:

- 177** citations issued
- 565** new cases opened
- 334** cases closed
- 2,388** inspections performed
- 115** impound notices issued
- 862** total active cases

Permit center:

- 709** new driveway permits (up 39%)
- 530** new utility permits (up 12%)
- 38** new construction permits (up 30%)
- 29** new encroachment permits (down 15%)
- 337** new ROW complaints (up 40%)

Current planning:

- Multi-family permits up 37%
- Marijuana referrals up 51%
- Flood permits (up 92%)



*Dedicated to
being the greatest
community in Alaska
to live, work and play*

Matanuska-Susitna Borough 2022 Performance Report

Matsugov.us
Public Affairs
(907) 861-8520

