



*Port MacKenzie Rail Extension Project  
2013 Annual Report*

**Prepared for:**

Surface Transportation Board  
395 E Street SW  
Washington, DC 20423

Alaska State Historic Preservation Officer  
550 West 7<sup>th</sup> Avenue, Suite 1310  
Anchorage, AK 99501

**Prepared by:**

HDR Alaska, Inc. with the  
Port MacKenzie Rail Extension Working Group

Alaska Railroad Corporation  
327 W. Ship Creek Avenue  
Anchorage, Alaska 99501

January 2014

*This page intentionally left blank.*

**Table of Contents**

1 Introduction..... 1  
2 Timeline/Milestones ..... 1  
    2.1 Timeline for Completion of Work ..... 1  
    2.2 Milestones for the Undertaking, 2013 ..... 2  
    2.3 Proposed Timeline and Milestone Changes..... 3  
3 Description of Tasks Accomplished During 2013..... 3  
    3.1 Contractor Training..... 3  
    3.2 Iditarod Dog Sledding Resources ..... 3  
    3.3 Area of Potential Effect (APE) ..... 4  
    3.4 Surveys..... 5  
4 Progress of the Undertaking..... 6  
5 Effectiveness of the Programmatic Agreement (PA)..... 6  
6 Anticipated Upcoming Efforts for Identification, Evaluation, Mitigation, and Protection of  
    Historic Properties ..... 7  
7 Consultation and Updated Contact List ..... 7

**Tables**

Table 2-1: Timeline of Implementation of PA Stipulations, 2011-2013 ..... 1  
Table C- 1: Summary of 2013 Surveys..... C-8

**Appendices**

Appendix A: Contractor Training Attendees  
Appendix B: Area of Potential Effect (APE) Maps  
Appendix C: 2013 Survey Photographs and Summary  
Appendix D: Iditarod Dog Sledding Multiple Property (IDSMP) Consulting Parties and Contacts  
Appendix E: Updates to Contact Lists in PA Attachments A.2 and A.3

## List of Acronyms/Abbreviations

ACHP .....	Advisory Council on Historic Preservation
ADNR .....	Alaska Department of Natural Resources
APE .....	Area of Potential Effects
ARRC .....	Alaska Railroad Corporation
BLM .....	Bureau of Land Management
EIS .....	Environmental Impact Statement
HDR .....	HDR Alaska, Inc.
IDSHD .....	Iditarod Dog Sledding Historic District
IDSMP .....	Iditarod Dog Sledding Multiple Property
KTC .....	Knik Tribal Council
MOU .....	Memorandum of Understanding
MSB .....	Matanuska-Susitna Borough
NEPA .....	National Environmental Policy Act
NHPA .....	National Historic Preservation Act
NHT .....	National Historic Trail
NRHP .....	National Register of Historic Places
PA .....	Programmatic Agreement
PMRE .....	Port MacKenzie Rail Extension
ROW .....	Right-of-way
SHPO .....	State Historic Preservation Officer
STB .....	Surface Transportation Board
USACE .....	U.S. Army Corps of Engineers

## 1 Introduction

The Alaska Railroad Corporation (ARRC), in partnership with the Matanuska-Susitna Borough (MSB), has undertaken planning for construction of the Port MacKenzie Railroad Extension (PMRE) project. In a November 2011 decision, the Surface Transportation Board (STB), the lead Federal agency for the project, approved a license allowing ARRC to construct and operate approximately 35 miles of new rail line connecting the Port MacKenzie District to a point on ARRC’s existing main line near Houston, Alaska. Construction of the PMRE project has been broken into segments, allowing for construction over multiple seasons. That authorization was issued after completion of an Environmental Impact Statement (EIS), and is subject to environmental mitigation conditions including a Programmatic Agreement (PA)<sup>1</sup> executed by the STB, the Advisory Council on Historic Preservation (ACHP), and the Alaska State Historic Preservation Officer (SHPO). A Memorandum of Understanding (MOU), developed in accordance with the PA, was implemented between the MSB, Knik Tribal Council (KTC), and ARRC (collectively defined as the “Working Group”) with input from the STB and SHPO to outline the objectives and tasks assigned to the Working Group.

This document was prepared in accordance with Stipulation VII of the PA (also Stipulation 3 through 7 of the MOU), which requires ARRC to prepare an annual report on the progress of implementation of PA stipulations, including the actions of the Working Group. This *Annual Report* focuses on the period from January through December 2013.

## 2 Timeline/Milestones

PA Stipulation (VII.A.1) requires that the *Annual Report* include a timeline under which work will be completed, milestones met for the Undertaking, and any proposed timeline and/or milestone changes. The following section includes a discussion of timelines and milestones focused on the tasks under the PA and associated cultural resource milestones in relation to milestones for the undertaking.

### 2.1 Timeline for Completion of Work

A summary of the timeline for implementation and completion of PA stipulations is included in Table 2-1.

**Table 2-1: Timeline of Implementation of PA Stipulations, 2011-2013**

Tasks	Task Deadline	Task Status
Develop Memorandum of Understanding (MOU)	No later than 45 days after STB licensing of Alternative	Executed (12/5/2011)
Develop Iditarod Dog Sledding Historic District (IDSHD) Workshop	Within 60 days after STB licensing of Alternative	Conducted workshops (6/28/2011, 7/7/2011, 1/11/2012) and open house (10/27/2011)
Develop IDSHD Workshop Summary & Implementation Plan	Within 60 days after IDSHD Workshop	<ul style="list-style-type: none"> <li>• Draft (3/1/2012)</li> <li>• Final (11/21/2012)</li> </ul>

---

<sup>1</sup> Programmatic Agreement Among Surface Transportation Board, Advisory Council on Historic Preservation, and Alaska State Historic Preservation Officer Regarding the Alaska Railroad Corporation Construction and Operation of a Rail Line Extension to Port MacKenzie, Alaska. Docket No. FD 35095. May 25, 2011.

<b>Tasks</b>	<b>Task Deadline</b>	<b>Task Status</b>
Delineate Area of Potential Effect (APE)	No later than 60 days after STB licensing of Alternative	Final (12/30/2011)
Revisions of Proposed Final APE	Within 30 days of ARRC's receipt of license/permit altering APE (if needed)	<ul style="list-style-type: none"> <li>• Revised APE (Segment 5; 3/9/2012)</li> <li>• Revised APE (Segment 6; 8/15/2012)</li> <li>• Adjustments to the APE have been ongoing and are summarized in Section 3.3</li> </ul>
Develop Curation Policy and Agreement	Prior to ground-disturbing activity	<ul style="list-style-type: none"> <li>• Draft (2/8/2012)</li> <li>• Final (3/9/2012)</li> </ul>
Develop Annual Training Curriculum	Annually	<ul style="list-style-type: none"> <li>• Draft (11/23/2011)</li> <li>• Final (1/25/2012)</li> </ul>
Conduct Annual Training	Annually	<ul style="list-style-type: none"> <li>• 2012 training (1/25/2012)</li> <li>• 2013 training (3/14/2013)</li> </ul>
Identification & Evaluation of Potential Historic Properties in APE	Information submitted within 30 days of investigating any sites in final APE	<ul style="list-style-type: none"> <li>• Segment 1, Section 6 Borrow Site, Alsop Haul Road survey and report (final 3/20/2012)</li> <li>• Segment 6 survey and report (final 8/15/2012)</li> <li>• Segment 5 survey not needed (memo to STB/ SHPO 7/27/2012)</li> <li>• Segment 3 &amp; 4 (final 12/3/2012)</li> <li>• Port MacKenzie Tower Site and Reddane Connector/Alsop Haul Road survey and report addendum (final 9/30/2013)</li> <li>• Segment 2 survey and report (final 11/19/2013)</li> <li>• Little Susitna River Bridge (ANC-00085) consultation (correspondence 12/2013, ongoing)</li> </ul>
Prepare and Review Unanticipated Discovery Reports	Within 72 hours of discovery	None required in 2013
Prepare <i>Annual Report</i>	Annually	<ul style="list-style-type: none"> <li>• Submitted for 2011-2012 (1/30/2013)</li> <li>• Pending for 2013 (draft to be submitted prior to 1/31/2014)</li> </ul>

## 2.2 Milestones for the Undertaking, 2013

The following are 2013 milestones for the PMRE project:

- Construction contracts have been awarded for Segments 1, 3, 4, and 6
- Construction is underway in Segments 1, 3, and 6 and vegetation clearing is underway in Segment 4
- All necessary right-of-way (ROW) has been acquired for Segments 1, 3, 4, and 6

- Public outreach events included materials being provided at the 6<sup>th</sup> Annual Mat-Su Transportation Fair in Wasilla, Alaska (8/7/2013); a project public open house in Houston, Alaska (4/24/2013); and a ceremonial ground breaking at Port MacKenzie (6/4/2013)

### **2.3 Proposed Timeline and Milestone Changes**

There are no anticipated timeline/milestone changes that will affect implementation of PA stipulations. The timeline/milestones for 2014 for the Undertaking are as follows:

- Continue construction of Segment 1, 3, 4, and 6
- Start vegetation clearing (Spring 2014) and signage related to trail realignments
- Solicit bids for construction of Segment 5
- Continue design of rail facilities and project
- Continue to acquire project ROW
- Continue to acquire/modify permits as needed
- Continue public outreach efforts

## **3 Description of Tasks Accomplished During 2013**

### **3.1 Contractor Training**

Per PA Stipulation IX, ARRC conducted annual training for on-site supervisory-level employees and contractors. The Working Group developed a Contractor Training Powerpoint presentation and binder in 2011. Training materials were sent to Working Group members, STB, SHPO, and Tribes listed in PA Attachment A-2 for preview and comment prior to finalizing the materials. The binder was updated in 2013.

A training for contractors was held on March 14, 2013. The nine attendees included supervisory-level contractors/employees. Working Group members and SHPO representatives were invited via e-mail and telephone to the training, but did not attend. A binder of training materials was provided to each attendee with the intent that this material would be provided to employees/contractors who did not attend the training in person. The presentation was given by a Secretary of Interior-qualified archaeologist employed by HDR Alaska, Inc. (HDR). The sign-in sheet identifying the employees and contractors who attended the annual training is included in Appendix A.

### **3.2 Iditarod Dog Sledding Resources**

The PA identified mitigation measures to address possible effects to the Iditarod Dog Sledding Historic District (IDSHD), which would be bisected by the PMRE project. The IDSHD (ANC-03326/TYO-00203) was found eligible for the National Register of Historic Places (NRHP) in 2010. Stipulation V of the PA (*Treatment of the Iditarod Dog Sledding Historic District*), as well as Mitigation Measures 92 and 93 in the ROD for the Final EIS, identified mitigation for adverse effects to the IDSHD that were addressed through preparation of the *Workshop Summary and Implementation Plan (Implementation Plan)*. This document, which included a provision for additional documentation of the IDSHD, was finalized in November 2012.

Additional consultation among the Working Group and SHPO following final submittal of the *Implementation Plan* indicated that the IDSHD property would be better suited to a multiple property approach, and recommended additional documentation. As part of this multiple property approach, the ARRC and SHPO consulted to revise the scope of work and goals for this supplemental documentation.

A draft document, *Port MacKenzie Rail Extension Project Multiple Property Documentation: Iditarod Dog Sledding Properties in the Point MacKenzie Area, 1967-1978*, is in progress. A pre-submittal draft was submitted to the Working Group and SHPO for review and comment in December 2013. This document will be finalized in early 2014.

### **3.3 Area of Potential Effect (APE)**

Per PA Stipulation II, ARRC submitted the proposed final APE to STB and SHPO in December 2011. The direct APE includes a 200-foot ROW (100 feet on either side of the rail centerline) and other ground disturbance areas that may be outside the 200-foot ROW (e.g., staging areas, cut and fill areas, material sources, etc.). In addition, an indirect APE includes an area of one mile maximum<sup>2</sup> on either side of the rail centerline.

Changes in project design required a modification to the APE in the northernmost portion of Segment 6 and in Segment 5 near Muleshoe Lake. ARRC submitted proposed modifications of the proposed final APE to STB and SHPO in March 2012.

Due to the likelihood of additional changes, ARRC proposed a revised approach to STB and SHPO for dealing with future modifications to the APE. Modifications that are within the overall APE (i.e., including direct and indirect effects) will only result in a change from indirect to direct effects, and a request for modification and approval of a revised APE is not necessary. ARRC will notify STB and SHPO of any changes in designation from indirect to direct effects, and provide an updated APE map in the *Annual Report*.

There was only one change to the APE in 2013 (see Appendix B). Changes to the APE since the December 2011 APE include:

- Segment 6: Added areas of direct APE within Township 18 North, Range 3 West, Sections 17 and 20
- Segment 2: Shifted the direct APE to the east in Township 15 North, Range 4 West, Sections 18 and 19
- Segment 2: Reduced the footprint of the Terminal Reserve area in Township 15 North, Range 4 West, Sections 19, 30 and 31
- Segment 2/Reddane Avenue: Removed the southwest portion of the former Alsop Haul Road; the APE now only includes a connector road between the existing Reddane Avenue and the Alsop Pit in Township 15 North, Range 4 West, Section 32
- Segment 2: Shifted the direct APE to the east in Township 14 North, Range 4 West, Sections 7 and 8

---

<sup>2</sup> The APE for indirect effects may be less than the proposed one-mile maximum in areas where views are impeded by dense vegetation or topography.



- Segment 1: Change from indirect to direct effects in Township 14 North, Range 4 West, Section 26 (see Appendix B)

### **3.4 Surveys**

Working Group representatives participated in surveys of portions of the project APE in 2013. Survey areas were determined in consultation between the Working Group, STB, and SHPO and by conditions observed in the field. The 2013 cultural resources surveys are summarized as follows:

- Reddane Extension/Alsop Haul Road:
  - The survey was led by HDR with MSB and KTC.
  - The survey was conducted in June 2013
  - A possible prehistoric cache pit site (TYO-00276) was identified within the Alsop Haul Road APE during a 2011 field survey. TYO-00276 was found eligible for the NRHP for the purposes of the PMRE project.
  - Further investigation of TYO-00276 in 2013 confirmed that the depressions in this area were not cultural in origin; therefore, TYO-00276 was found not eligible for the NRHP.
  - The 2013 survey of the Reddane Connector/Alsop Haul Road did not identify any additional cultural resources that may be affected by construction and operation of the PMRE project.
  - The draft report was submitted to the Working Group, SHPO, and STB on August 27, 2013, and the final report was submitted on September 30, 2013.
- Port MacKenzie Tower Location:
  - The survey was led by MSB (HDR and KTC unable to participate).
  - The survey was conducted in August 2013.
  - The 2013 survey of the Port MacKenzie Telecommunication Tower location did not identify any cultural resources that may be affected by construction and operation of the PMRE project.
  - The draft report was submitted to the Working Group, SHPO, and STB on August 27, 2013, and the final report was submitted on September 30, 2013.
- Segment 2:
  - The surveys were led by HDR with MSB and KTC.
  - The surveys were conducted in June and September, 2013.
  - The 2013 surveys of Segment 2 did not identify any cultural resources that may be affected by construction and operation of the PMRE project.
  - The draft report was submitted November 12, 2013, and the final report was submitted November 19, 2013.

Representative photographs from the 2013 surveys are included in Appendix C.

#### **4 Progress of the Undertaking**

The progress of the Undertaking is summarized as follows:

- Final project design is underway.
- MSB and ARRC have acquired all necessary project ROW for Segments 1, 3, 4 and 6; ROW negotiations for Segments 2 and 5 are ongoing.
- Construction for Segments 1, 3 and 6 is underway. Vegetation clearing activities for Segment 4 is underway.
- In cooperation with the MSB, local trails groups, and the Alaska Mental Health Trust Land Office, ARRC has awarded a contract for vegetation clearing and signage related to trail realignments along the new rail line. Vegetation clearing is expected to begin in early spring 2014.
- On October 5, 2012, Cook Inlet Keeper, Sierra Club, and Alaska Survival filed a legal challenge in the U.S. District Court for the District of Alaska against the U.S. Army Corps of Engineers (USACE) for issuing a Section 404 permit (POA 2007-1586) for the Port MacKenzie Rail Extension Project. On February 11, 2013 the Alaska District Court published an order denying the motion for preliminary injunction of construction (Case No. 3:12-cv-0205-RRB). Following an appeal by the plaintiffs of that order to the 9<sup>th</sup> Circuit Court of Appeals, the 9<sup>th</sup> Circuit issued a decision on February 26, 2013 that denied plaintiffs' request for an emergency injunction of construction pending appeal of the Alaska District Court's February 11 order. The 9<sup>th</sup> Circuit held oral arguments on plaintiffs' appeal on August 15<sup>th</sup>, 2013, in Anchorage. On October 7, 2013 the 9<sup>th</sup> Circuit affirmed the district court's decision denying the motion for a preliminary injunction of construction. The October 7, 2013 9<sup>th</sup> Circuit decision is available online at <http://cdn.ca9.uscourts.gov/datastore/memoranda/2013/10/07/13-35101.pdf>.
- A portion of Segment 2 situated outside of the Point MacKenzie Agricultural District is being evaluated for its potential inclusion into Segment 3. This action would expedite the construction of the approximately 1.2-mile segment that falls outside of restrictive State of Alaska agricultural covenants.
- Phasing and schedule will be dependent upon funding, court decisions, and permit acquisition.

No significant changes are anticipated to the Undertaking.

#### **5 Effectiveness of the Programmatic Agreement (PA)**

During 2013, there were several occasions that afforded ARRC, STB, SHPO and PA parties opportunity to assess the effectiveness of the PA. These included: a design change necessitating a modification to the APE, surveys in portions of previously unsurveyed areas in the APE, contractor training, and PA reporting and consultation requirements. No issues or deficiencies were identified as a result of implementation and use of the PA. No amendments or changes to the PA are needed at this time.

## 6 Anticipated Upcoming Efforts for Identification, Evaluation, Mitigation, and Protection of Historic Properties

ARRC and the Working Group anticipate that upcoming efforts will include:

- Iditarod Dog Sledding Multiple Property (IDSMP) documentation - finalize documentation per the *Implementation Plan*
- Contractor training - Update training materials as appropriate and conduct cultural resource training for contractors as construction contracts warrant
- Continued consultation - Continue coordination with the Working Group, with STB and SHPO, and with other PA parties, as appropriate

## 7 Consultation and Updated Contact List

Consultation adhered to the standards required in the PA and Working Group MOU. Consultation within and among the Working Group, SHPO, and STB is ongoing. Per the PA (Stipulation III.D.2), KTC is the point of contact for all Tribes who were concurring parties to the PA. MSB is the Certified Local Government for the project area, and the MSB representative for the Working Group acts as a point of contact for the MSB Historic Preservation Commission, which includes members from local historic preservation groups that have an interest in the project area.

Consultation for the IDSMP documentation will use the same consulting party list as that used for the IDSHD workshops and open house (Attachment D).

Section 106 materials are posted on the project website as appropriate (<http://www.portmacrail.com/library.html>). An explanation of Section 106 consultation and how to become a Section 106 consulting party is also included on the project website (<http://www.portmacrail.com/involved.html>).

An update to the contact lists in PA Attachments A.2 and A.3 is included in Appendix E.

*This page intentionally left blank.*

**Appendix A: Contractor Training Attendees**

*This page intentionally left blank.*



Cultural Resources Contractor Training

March 14, 2013 - 2:00 - 4:30 pm  
CIRI (2525 C St.) 4th Floor Multipurpose Conference Room (South), Anchorage, Alaska

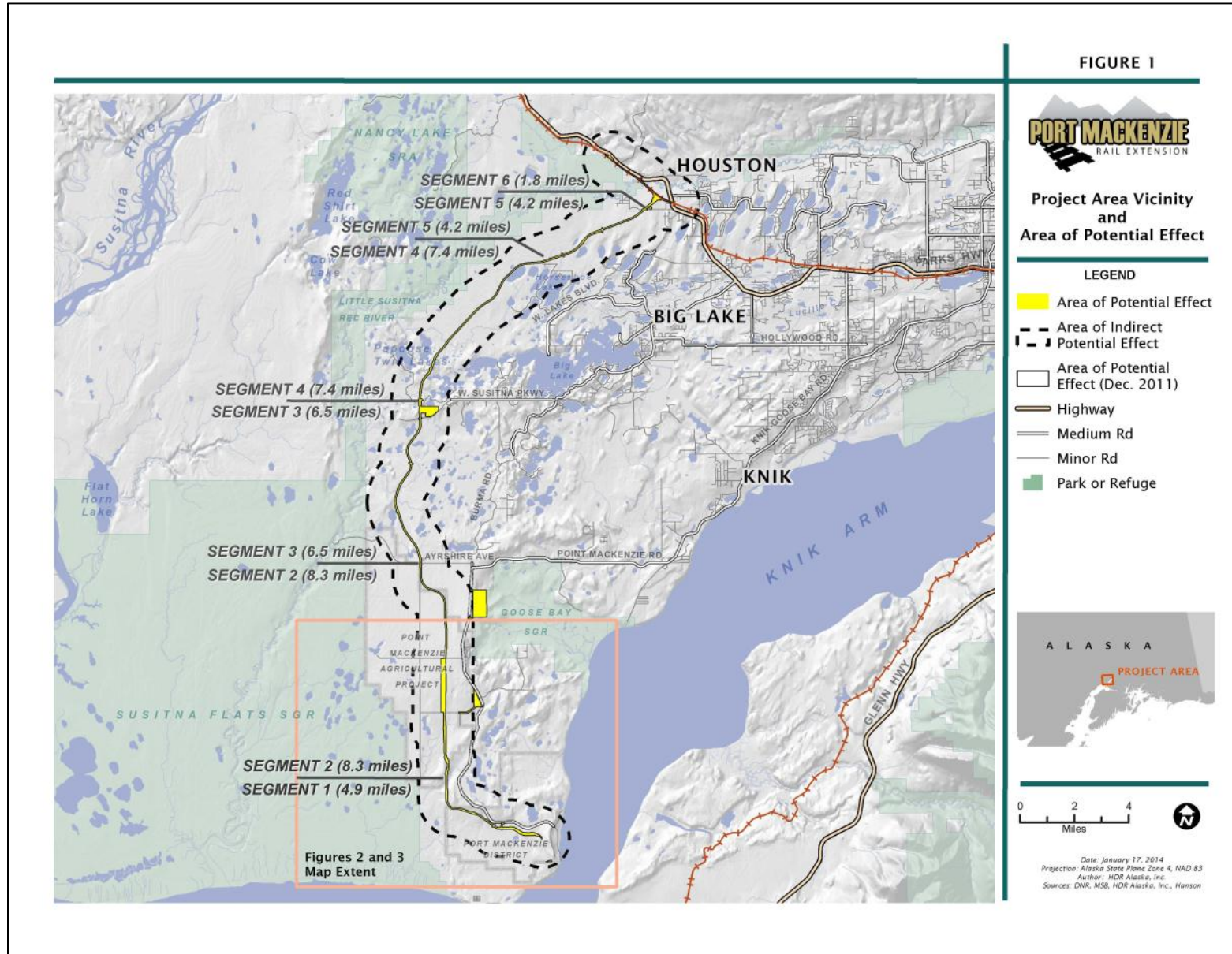
Name	Organization	Phone	Email
Bob Hanson	ARRC	265-2584	hansonb@akrr.com
Bill KAME	BCC	354-7738	
David Kabella	WCI	632-9251	dave.kabella@akrr.com
IRA LESAGE	GRANITE	830-5836	ira.lesage@gcinc.com
BOONE DANIELS	QAP	522-2211	BDANIELS@COLASKA.COM
Steve Spindler	QAP	529 9012	SS.spindler@colaska.com
Pam's McKoon	QAP	441-1664	
Matt Young	HDR	541-429-0672	Matthew.S.Young@hdrinc.com
Cliff Williams	HDR	602-677-4351	Cliff.Williams@HDRinc.com

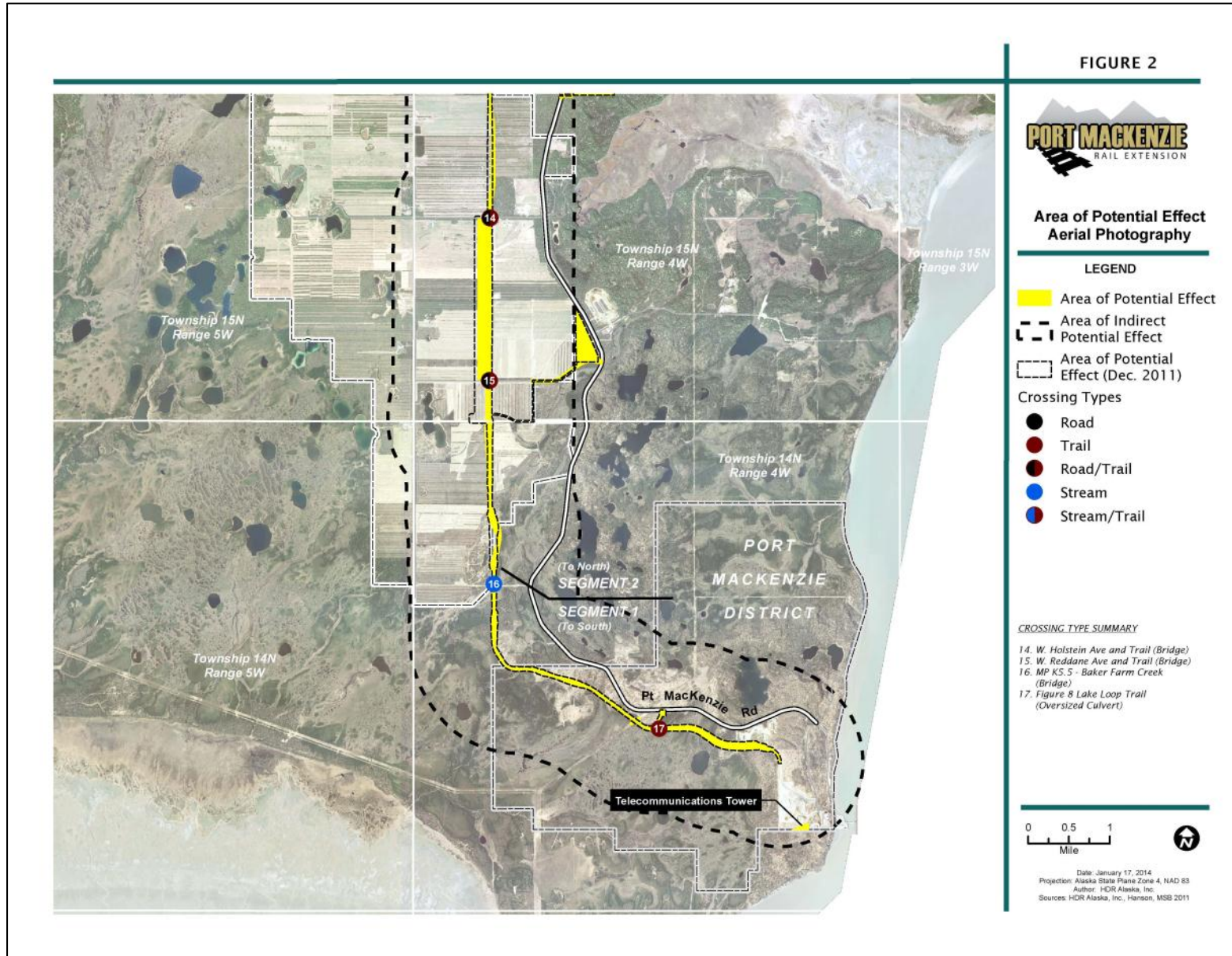
*This page intentionally left blank.*

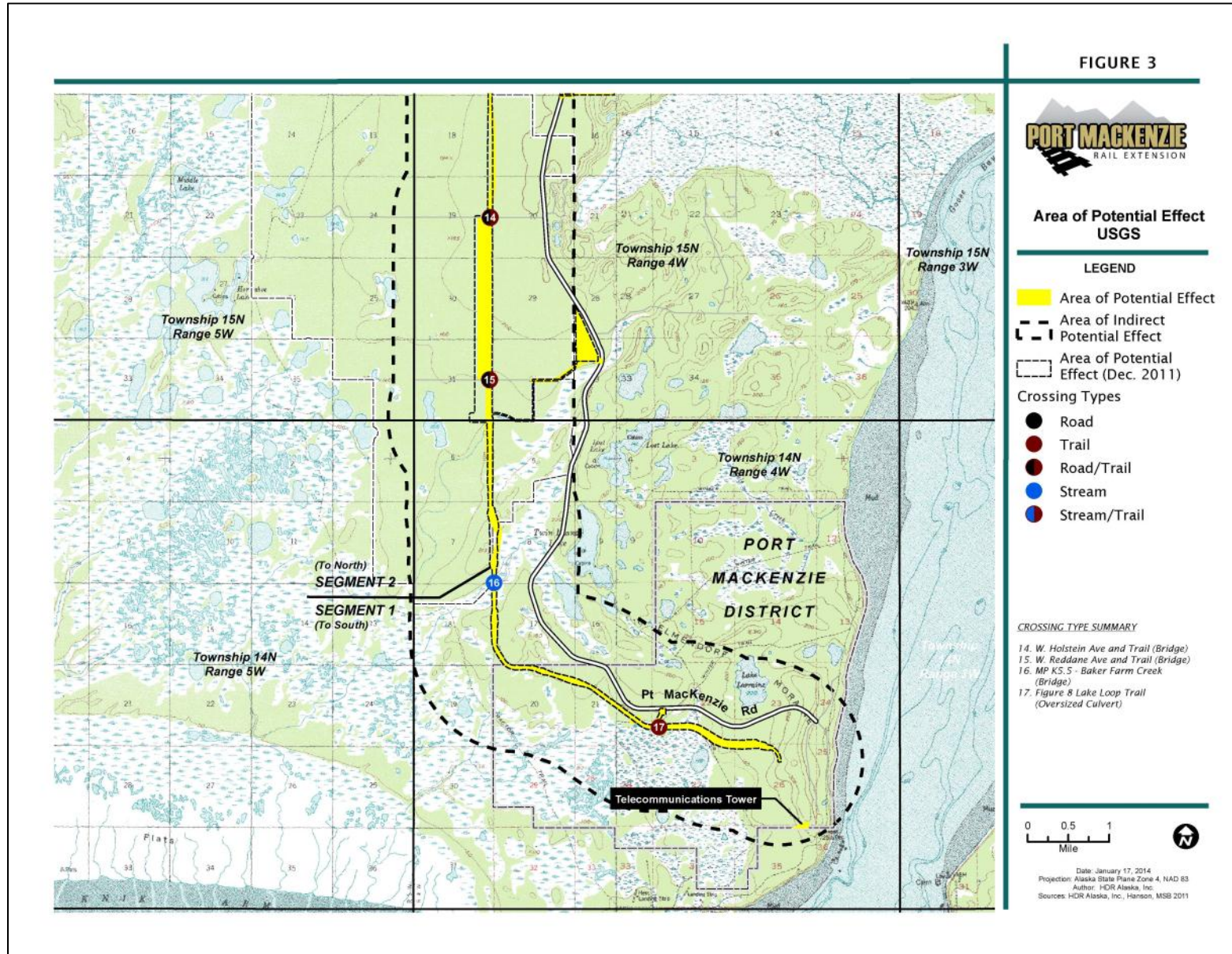


**Appendix B: Area of Potential Effect (APE) Maps**

*This page intentionally left blank.*







*This page intentionally left blank.*

**Appendix C: 2013 Survey Photographs and Summary**

*This page intentionally left blank.*





**Photograph C- 1: Segment 2 APE, north of Reddane Avenue (6/11/2013)**



**Photograph C- 2: Modern dump site within the Segment 2 APE, north of Reddane Avenue  
(6/11/2013)**

*Photos courtesy of Heather Ralston, MSB*



**Photograph C- 3: Segment 2 APE, south of Ayrshire Avenue (9/18/2013)**



**Photograph C- 4: Overgrown nonhistoric trail/corridor crossing the Segment 2 APE south of Ayrshire Avenue (9/18/2013)**



**Photograph C- 5: Negative test pit in Segment 2 APE south of Ayrshire Avenue (9/18/2013)**



**Photograph C- 6: Segment 2 APE, north of Holstein Avenue (9/18/2013)**



**Photograph C- 7: Reddane Connector/Alsop Haul Road APE (6/11/2013)**



**Photograph C- 8: Noncultural “depression in the Reddane Connector/Alsop Haul Road APE (6/11/2013)**

*Note: shovel is near center of a depression*



**Photograph C- 9: Port MacKenzie Tower location APE (8/12/2013)**  
*Photograph courtesy of MSB*



**Photograph C- 10: Port MacKenzie Tower location APE, facing south (8/12/2013)**  
*Photograph courtesy of MSB*

**Table C- 1: Summary of 2013 Surveys**

<b>Survey Date</b>	<b>Project Component</b>	<b>Legal Description</b>	<b>Survey Results</b>	<b>Test Pits?</b>	<b>Test Pit Results</b>	<b>Notes</b>	<b>Crew Members</b>
6/11/13	Segment #2 (north of Reddane Ave.)	15N04W31 15N04W30	Negative	No	N/A	Significant ground disturbance, modern dump area	Grover (HDR), Ralston (MSB), Theodore and Klaudi (KTC)
9/18/13	Segment #2 (south of Ayrshire Ave.)	15N04W06	Negative	Yes	Negative	Minimal ground disturbance, nonhistoric trail, Bearing Tree	Grover (HDR), Ralston (MSB), Theodore and Klaudi (KTC)
6/11/13	Reddane Connector/Alsop Haul Road	15N04W32	Negative	Yes	Negative	Multiple "depressions" scattered throughout survey area are noncultural	Grover (HDR), Ralston (MSB), Theodore and Klaudi (KTC)
8/12/13	Port MacKenzie Tower	14N04W26	Negative	No	N/A	Significant ground disturbance	Seager-Boss, Ralston, Martin, Harmston, Adamu and Lawler (MSB)

**Appendix D: Iditarod Dog Sledding Multiple Property (IDSMP)  
Consulting Parties and Contacts**

Note: This list is based on the IDSHD consulting party list (see Sections 3.2 and 7)

*This page intentionally left blank.*



Name	Organization
Jeff Bruno	Alaska Department of Natural Resources (ADNR)
Kyle Kidder	ADNR
Lesli Schick	ADNR
Shina duVall	ADNR/SHPO
Summer Rickman	ADNR/SHPO
Judy Bittner	ADNR/SHPO, Iditarod Historic Trail Alliance
Bob Chlupach	Aurora Dog Musers Club
Bud Smyth	Aurora Dog Musers Club
Carol Tyler	Aurora Dog Musers Club
Larisa Meyers-McCoin	Aurora Dog Musers Club
Vern Cherneski	Aurora Dog Musers Club
Margaret Billinger	Big Lake Chamber of Commerce
Dan Mayfield	Big Lake Trails
Cathy Mayfield	Big Lake Trails
Mike Donald	Big Lake Trails
Cole Donald	Big Lake Trails
Richard Gaffey	Big Lake Trails
Vern Halter	Dream a Dream Dog Farm
Kathy Chapoton	Happy Trails Kennels
Martin Buser	Happy Trails Kennels
Ramey Smyth & Becca Moore	Homestretch Kennel
Ralph Buzard	Houston Running
Kevin Keeler	Iditarod National Historic Trail Administrator, Bureau of Land Management (BLM)
Terry Langholz	Iditarod Trail Blazers
Chas St. George	Iditarod Trail Committee
Darrell Davis	Iditarod Trail Committee
Greg Bill	Iditarod Trail Committee
Joanne Potts	Iditarod Trail Committee
Mark Nordman	Iditarod Trail Committee
Kevin Kastner	Iron Dog
Richard Plack	Jr. Iditarod Trail Manager
Kelley Griffin	Knik Dog Musers Association
Jon Brautigam	Knik Dog Musers Association, Iditarod Trail Blazers
Harry Caldwell	Knik Dog Musers Association, Knik 200 Organization
Barb Redington	Knik Dog Musers Association
Debra Call	Knik Tribal Council
Richard Porter	Knik Tribal Council
Jaik Campbell	Mat-Su Trails Council
Bruce Paulsen	MSB
Fran Seager-Boss	MSB
Heather Ralston	MSB
Sue Allen	Northern Lights 300 Dog Race
Helen Hegener	Northern Lights Media
Cim & Corinne Smyth	Perseverance Springs Farm
Toby Riddell	Point MacKenzie Community Council

<b>Name</b>	<b>Organization</b>
Jody Simpson	Senator Huggins Office
Bruno & Joan Bryner	Willow Dog Musers Association
Dale & Jenny Evans	Willow Dog Musers Association
DeeDee Jonrowe	Willow Dog Musers Association
Donna Quante	Willow Dog Musers Association
Erin McLarnon	Willow Dog Musers Association
Robert Sexton	Willow Dog Musers Association
Sue Morgan	Willow Dog Musers Association
Vic Stanculescu & Tina Owen	Willow Dog Musers Association
Steve Charles	Willow Trial Committee
Bill Johnson	
Chris Kosinski	
Cindy Bettine	
Dan & Alice Huttunen	
Elaine & Gene Martin	
Ellen Halverson	
Frank Sihler	
Jim Clemensen	
Joe Meehan	
Kathie Smith	
Kevin Saiki	
Lynn McCoin	
Mike & Anna Stephan	
Noreen Austermuhl	
Roxann Dayton	
Sam Amato	
Scott Lanene	
Sharon Berg	

**Appendix E: Updates to Contact Lists  
in PA Attachments A.2 and A.3**

*This page intentionally left blank.*

## **A.2. Tribes and Alaska Native Organization Contact List [UPDATED] Federally Recognized Tribes and Tribal Groups**

Gary Harrison, Chief  
**Chickaloon Village Traditional Council**

*Send information to:*

Jennifer Harrison, Executive Director

P.O. Box 1105

Chickaloon, AK 99674-1105

Phone: 907-745-0707 (**General**)

Phone: 907-745-0749 (**Direct**)

Fax: 907-745-0709

[jenni@chickaloon.org](mailto:jenni@chickaloon.org)

*Other contact:*

Gary Stevig, Transportation Assistant Director, (907) 745-0854

**Lee Stephan**, President

**Native Village of Eklutna**

26339 Eklutna Village Road

Chugiak, Alaska 99567

Phone: 907-688-6020

Fax: 907-688-6021

[president@eklutna-nsn.gov](mailto:president@eklutna-nsn.gov)

*Other contact:*

Marc Lamoreaux, Land & Environment Director, (907) 688-6020

**Mike Tucker**, President

**Knik Tribal Council**

PO Box 871565

Wasilla, Alaska 99687-1565

Phone: 907-373-7991

Fax: 907-373-2161

[mtucker@kniktribe.org](mailto:mtucker@kniktribe.org)

*Other contacts:*

Richard Porter, Executive Director, Phone: 907-373-7971, [rporter@kniktribe.org](mailto:rporter@kniktribe.org)

Frank Standifer, President

**Native Village of Tyonek**

PO Box 82009

Tyonek, Alaska 99682-0009

Phone: 907-583-2201

Fax: 907-583-2442

*Other contact:*

**Tina Constantine, Environmental**, Phone: 907 583-2201, [Tina\\_C@tyonek.net](mailto:Tina_C@tyonek.net)

## Alaska Native Regional Corporations

**Sophie Minich**, President and Chief Executive Officer

**Cook Inlet Region, Inc.**

2525 C Street, Suite 500

P.O. Box 93330

Anchorage, Alaska 99509-3330

Phone: 907-274-8638

Fax: 907-279-8836

[sminich@ciri.com](mailto:sminich@ciri.com)

*Other contact:*

Kim Cunningham, Director, Land and Resources, 907-274-8638

## Alaska Native Village Corporations

Curtis McQueen, Chief Executive Officer

**Eklutna, Incorporated**

16515 Centerfield Dr., Suite 201

Eagle River, AK 99577

Phone: 907-696-2828

Fax: 907-696-2845

[curtis@eklutnainc.com](mailto:curtis@eklutnainc.com)

*Other contact:*

Jim Arnesen, Corporate Land & Regulatory Manager, 907-696-2828

Raymond Theodore, President

**Knikatu, Incorporated**

P.O. Box 872130

Wasilla, Alaska 99687-2130

[raymondtheodore@hotmail.com](mailto:raymondtheodore@hotmail.com)

Phone: 907-376-2845

Fax: 907-376-2847

Michaelene Stephan, President

**Tyonek Native Corporation**

1689 C St., Suite 219

Anchorage, AK 99501-5131

Phone: 907-272-0707

Fax: 907-274-7125

*Other contact:*

**Bart Garber**, Chief Executive Officer, 907-272-0707

**Eydie** Baller, President  
**Chickaloon-Moose Creek Native Association, Inc.**  
P.O. Box 875046  
Wasilla, AK 99687  
Phone: 907-373-1145  
Fax: 907-373-1004

Gloria O'Neill, President and Chief Executive Officer  
**Cook Inlet Tribal Council**  
3600 San Jeronimo Dr.  
Anchorage, AK 99508  
Phone: 907-793-3600  
Fax: 907-793-3602

### **Other**

Aaron Leggett, Dena'ina Cultural Historian, **Anchorage Museum Special Exhibits Curator**  
Phone: (907) 929-9274  
[aleggett@anchagemuseum.org](mailto:aleggett@anchagemuseum.org)

## **A.3. Dog Mushing Organizations/Other Interested Groups Contact List** **[UPDATED]**

### **Dog Mushing Organizations**

**Justin High**, President  
**Willow Dog Musers Association**  
P.O. Box 858  
Willow, AK 99688  
[president@willowdogmusers.org](mailto:president@willowdogmusers.org)

Martin Buser  
**Happy Trails Kennels**  
P.O. Box 520997, Mile 4.5 West Lakes Blvd.  
Big Lake, AK 99652  
Phone: 907-355-7898 (cell)  
*Additional contact:* Kathy Chapoton, [kchap1@me.com](mailto:kchap1@me.com)

Vern Halter  
**Dream a Dream Dog Farm**  
P.O. Box 389  
Willow, AK 99688  
Phone: 907-495-1197  
[vhalter@mtaonline.net](mailto:vhalter@mtaonline.net)

Steve Charles, Chairman  
**Willow Trail Committee**  
Phone (907) 495-6368.  
Fax: (907) 495-1924  
scharles@mtaonline.net

Chas St. George  
**Iditarod Trail Committee**  
PO Box 870800  
Wasilla, AK 99687  
cstgeorge@iditarod.com

**Jonathan Sewall**, Vice President  
**Iditarod Historic Trail Alliance**  
PO Box 2323  
Seward, Alaska 99664  
[IditarodHTA@gmail.com](mailto:IditarodHTA@gmail.com)

### **Other Interested Groups**

Fran Seager-Boss, Cultural Resources Specialist  
**Matanuska Susitna Borough Historic Preservation Commission**  
350 East Dahlia Avenue  
Palmer, Alaska 99645  
Fran.Seager-Boss@matsugov.us  
(907) 745-9859

*Additional Contacts:*

Vickie Cole, Cultural Resources Assistant, (907) 745-9655, [Victoria.Cole@matsugov.us](mailto:Victoria.Cole@matsugov.us)  
Dan Stone, [Daniel.Stone@matsugov.us](mailto:Daniel.Stone@matsugov.us)

Jim Barnett  
**Cook Inlet Historical Society**  
121 W. 7th Avenue  
Anchorage, AK 99501-3611  
Phone: 907 346-2755; Fax: 907-343-6149  
[jbarnett@alaska.com](mailto:jbarnett@alaska.com)

Julie Decker, **Museum Director/CEO**  
**Anchorage Museum**  
625 C Street; Anchorage, AK 99501  
Phone: 907-929-9237  
[jdecker@anchagemuseum.org](mailto:jdecker@anchagemuseum.org)



**Wasilla-Knik-Willow Creek Historical Society**

300 N. Boundary Street, Suite B

Wasilla, AK 99654

Phone: 907-376-2005

[wasillaknikhistoricalsociety@yahoo.com](mailto:wasillaknikhistoricalsociety@yahoo.com); [wkwchistorical@hotmail.com](mailto:wkwchistorical@hotmail.com)

**Museum of Alaska Transportation and Industry**

P.O. Box 870646

Wasilla, AK 99687

[mati@mtaonline.net](mailto:mati@mtaonline.net) (closed for winter; leave message)

Phone: 907-376-1211

**Palmer Historical Society**

P.O. Box 1935

Palmer, AK 99645-1935

Phone: 907-745-1935

[colony@palmerhistoricalsociety.org](mailto:colony@palmerhistoricalsociety.org)

*This page intentionally left blank.*