



*Port MacKenzie Rail Extension Project
2011-2012 Annual Report*

Prepared for:

Surface Transportation Board
395 E Street SW
Washington, DC 20423

Alaska State Historic Preservation Officer
550 West 7th Avenue, Suite 1310
Anchorage, AK 99501

Prepared by:

HDR Alaska, Inc. with the
Port MacKenzie Rail Extension Working Group

Alaska Railroad Corporation
327 W. Ship Creek Avenue
Anchorage, Alaska 99501

January 2013

This page intentionally left blank.

Table of Contents

1 Introduction..... 1
2 Timeline/Milestones 1
 2.1 Timeline for Completion of Work 1
 2.2 Milestones for the Undertaking, 2011-2012 2
 2.3 Proposed Timeline and Milestone Changes..... 2
3 Description of Tasks Accomplished During 2011-2012 3
 3.1 Working Group Memorandum of Agreement (MOU) 3
 3.2 Contractor Training..... 3
 3.3 Curation Policy 3
 3.4 Iditarod Dog Sledding Historic District (IDSHD) 3
 3.5 Area of Potential Effect (APE) 4
 3.6 Surveys..... 5
4 Progress of the Undertaking..... 6
5 Effectiveness of the Programmatic Agreement (PA)..... 6
6 Anticipated Upcoming Efforts for Identification, Evaluation, Mitigation, and Protection of
 Historic Properties 7
7 Consultation and Updated Contact List 7

Tables

Table 2-1: Timeline of Implementation of PA Stipulations 1
Table C-1: Summary of Segment 1, Alsop Haul Road, and Section 6 Borrow Area Survey..... C-7
Table C-2: Summary of Segment 6 Survey C-8
Table C-3: Summary of Segment 3 and 4 Survey C-8

Appendices

- Appendix A: Contractor Training Attendees
- Appendix B: APE Maps
- Appendix C: Summary of Cultural Resources Encountered, 2011-2012
- Appendix D: IDSHD Consulting Parties and Contacts
- Appendix E: Updates to Contact Lists in PA Attachments A.2 and A.3

List of Acronyms/Abbreviations

ACHP	Advisory Council on Historic Preservation
ADNR	Alaska Department of Natural Resources
APE	Area of Potential Effects
ARRC	Alaska Railroad Corporation
BLM	Bureau of Land Management
CFR	Code of Federal Regulations
Corps	U.S. Army Corps of Engineers
EIS	Environmental Impact Statement
GPS	Global Positioning System
HDR	HDR Alaska, Inc.
HTK	Happy Trails Kennels
IDSHD	Iditarod Dog Sledding Historic District
KTC	Knik Tribal Council
MOU	Memorandum of Understanding
MSB	Matanuska-Susitna Borough
NEPA	National Environmental Policy Act
NHPA	National Historic Preservation Act
NHT	National Historic Trail
NPS	National Park Service
NRHP	National Register of Historic Places
OHA	Office of History and Archaeology
PA	Programmatic Agreement
PMRE	Port MacKenzie Rail Extension
ROW	Right-of-way
SHPO	State Historic Preservation Officer
STB	Surface Transportation Board
WDMA	Willow Dog Musers Association

1 Introduction

The Alaska Railroad Corporation (ARRC), in partnership with the Matanuska-Susitna Borough (MSB), has undertaken planning for construction of the Port MacKenzie Railroad Extension (PMRE) project. In a November 2011 decision, the Surface Transportation Board (STB), the lead Federal agency for the project, approved a license allowing ARRC to construct and operate approximately 35 miles of new rail line connecting the Port MacKenzie District to a point on ARRC’s existing main line near Houston, Alaska. Construction of the PMRE project has been broken into segments, allowing for construction over multiple seasons. That authorization was issued after completion of an Environmental Impact Statement (EIS), and is subject to environmental mitigation conditions including a Programmatic Agreement (PA)¹ executed by the STB, the Advisory Council on Historic Preservation (ACHP), and the Alaska State Historic Preservation Officer (SHPO). A Memorandum of Understanding (MOU), developed in accordance with the PA, was implemented between the MSB, Knik Tribal Council (KTC), and ARRC (collectively defined as the “Working Group”) with input from the STB and SHPO to outline the objectives and tasks assigned to the Working Group.

This document was prepared in accordance with Stipulation VII of the PA (also Stipulation 3 through 7 of the MOU), which requires ARRC to prepare an annual report on the progress of implementation of PA stipulations, including the actions of the Working Group. This *Annual Report* focuses on the period from November 2011 through December 2012, but also briefly summarizes work under the PA after it was executed in May 2011.

2 Timeline/Milestones

PA Stipulation (VII.A.1) requires that the *Annual Report* include a timeline under which work will be completed, milestones met for the Undertaking, and any proposed timeline and/or milestone changes. The following section includes a discussion of timelines and milestones focused on the tasks under the PA and associated cultural resource milestones in relation to milestones for the undertaking.

2.1 Timeline for Completion of Work

A summary of the timeline for implementation and completion of PA stipulations is included in Table 2-1.

Table 2-1: Timeline of Implementation of PA Stipulations

Tasks	Task Deadline	Task Status
Develop Memorandum of Understanding (MOU)	No later than 45 days after STB licensing of Alternative	Executed (12/5/2011)
Develop Iditarod Dog Sledding Historic District (IDSHD) Workshop	Within 60 days after STB licensing of Alternative	Conducted workshops (6/28/2011, 7/7/2011, 1/11/2012) and open house (10/27/2011)
Develop IDSHD Workshop Summary & Implementation Plan	Within 60 days after IDSHD Workshop	<ul style="list-style-type: none"> • Draft (3/1/2012) • Final (11/21/2012)

¹ Programmatic Agreement Among Surface Transportation Board, Advisory Council on Historic Preservation, and Alaska State Historic Preservation Officer Regarding the Alaska Railroad Corporation Construction and Operation of a Rail Line Extension to Port MacKenzie, Alaska. Docket No. FD 35095. May 25, 2011.

Tasks	Task Deadline	Task Status
Delineate Area of Potential Effect (APE)	No later than 60 days after STB licensing of Alternative	Final (12/30/2011)
Revisions of Proposed Final APE	Within 30 days of ARRC's receipt of license/permit altering APE (if needed)	<ul style="list-style-type: none"> • Revised APE (Segment 5; 3/9/2012); • Revised APE (Segment 6; 8/15/2012)
Develop Curation Policy and Agreement	Prior to ground-disturbing activity	<ul style="list-style-type: none"> • Draft (2/8/2012) • Final (3/9/2012)
Develop Annual Training Curriculum	Annually	<ul style="list-style-type: none"> • Draft (11/23/2011) • Final (1/25/2012)
Conduct Annual Training	Annually	Training conducted for Segment 1 contractors (1/25/2012)
Identification & Evaluation of Potential Historic Properties in APE	Information submitted within 30 days of investigating any sites in final APE	<ul style="list-style-type: none"> • Segment 1, Section 6 Borrow Site, Alsop Haul Road survey and report (draft 1/26/2012, draft 2/27/2012, final 3/20/2012) • Segment 6 survey and report (draft 6/15/2012, final 8/15/2012) • Segment 5 survey not needed (memo to STB/ SHPO 7/27/2012) • Segment 3 & 4 (draft 11/6/2012, final 12/3/2012)
Prepare and Review Unanticipated Discovery Reports	Within 72 hours of discovery	None completed in 2011-2012
Prepare <i>Annual Report</i>	Annually	Submitted for 2011-2012 (1/30/2013)

2.2 Milestones for the Undertaking, 2011-2012

The following are 2011-2012 milestones for the PMRE project:

- March 25, 2011 – Release of EIS
- May 25, 2011 – Section 106 PA (executed June 15, 2011)
- November 17, 2011 – STB Final Decision recorded
- January 2012 – Segment 1 construction bid awarded
- April 2012 – Segment 1 construction begins
- September 10, 2012 – U.S. Army Corps of Engineers (Corps) issues Section 404 Permit

2.3 Proposed Timeline and Milestone Changes

There are no anticipated timeline/milestone changes that will affect implementation of PA stipulations. The timeline/milestones for 2013 for the Undertaking are as follows:

- Construction of Segment 1 will resume
- Construction of Segments 3, 4, and 6 will be initiated
- Design of rail facilities and project continue
- Continue to acquire project right-of-way (ROW)
- Continue to acquire/modify permits as needed

3 Description of Tasks Accomplished During 2011-2012

3.1 Working Group Memorandum of Agreement (MOU)

The Working Group was formed under the PA (Stipulation III.A) and includes ARRC, MSB, and KTC in consultation with STB and SHPO. A MOU was developed by the Working Group in consultation with STB and SHPO and executed on December 8, 2011. The purpose of the MOU is to describe and reinforce the Working Group's objectives by identifying roles and responsibilities; developing a summary of tasks and deliverables for completing responsibilities; developing review and consultation procedures; and establishing the appropriate level of effort for identification, evaluation, and mitigation.

3.2 Contractor Training

Per PA Stipulation IX, ARRC conducted annual training for on-site supervisory-level employees and contractors. The Working Group developed a Contractor Training Powerpoint presentation and binder in 2011. Training materials were sent to Working Group members, STB, SHPO, and Tribes listed in PA Attachment A-2 for preview and comment prior to finalizing the materials.

The half-day training for Segment 1 contractors was on January 25, 2012. The 20 attendees included contractors/employees, Working Group members, and a SHPO representative. A binder of training materials was provided to each attendee with the intent that this material would be provided to employees/contractors who did not attend the training in person. The presentation was given by HDR Alaska, Inc., MSB, and KTC. The sign-in sheet identifying the employees and contractors who attended the annual training is included in Appendix A.

3.3 Curation Policy

Per PA Stipulation VI, the Working Group developed a curation policy for artifacts, faunal remains, samples, records and field notes, and related material collected during Section 106 and National Environmental Policy Act (NEPA) identification and evaluation activities. ARRC identified University of Alaska Museum of the North as its repository and submitted a Provisional Curation Request to that facility to address any materials collected during Section 106 identification and evaluation efforts. A draft *Curation Policy* was provided to the Working Group, STB, and SHPO for review and comment. The final *Curation Policy* was submitted to PA Signatories, Invited Signatories, and Concurring Parties on March 9, 2012.

3.4 Iditarod Dog Sledding Historic District (IDSHD)

In accordance with PA Stipulation V, and in consultation with the STB and SHPO, ARRC held a series of workshops (6/28/2011, 7/7/2011, and 1/11/2012) with dog sledders and other trail users interested in the IDSHD and trails impacted by the project. In addition, MSB held an open house (10/27/2011). Based on comments at the meetings, it became clear that the trail users were more concerned with continued access and connectivity within the IDSHD than in identification of contributing trails. Therefore, the focus of the workshops shifted from delineating the boundaries of contributing features, historic function, and how to maintain this function to identifying ways to maintain safe access and connectivity for trail users.

ARRC, in consultation with the Working Group, STB and SHPO:

- Drafted the *Iditarod Dog Sledding Historic District Workshop Summary and Implementation Plan (Implementation Plan)* to comply with PA Stipulation V and Mitigation Measures 92 and 93 of STB's Final Decision and submitted it to all PA parties for review and comment on March 1, 2012;
- Revised the *Implementation Plan* to address comments on the draft document and changes to several crossings resulting from design development and right-of-way negotiations; and
- Finalized the *Implementation Plan* and notified all PA parties and workshop participants it was posted to the project website on November 21, 2012.

3.5 Area of Potential Effect (APE)

Per PA Stipulation II, ARRC submitted the proposed final APE to STB and SHPO for review and comment on December 30, 2011. SHPO and STB had no objections to the proposed APE. The direct APE includes a 200-foot ROW (100 feet on either side of the rail centerline) and other ground disturbance areas that may be outside the 200-foot ROW (e.g., staging areas, cut and fill areas, material sources, etc.). In addition, an indirect APE includes an area of one mile maximum² on either side of the rail centerline.

Changes in project design required a modification to the APE in the northernmost portion of Segment 6 and in Segment 5 near Muleshoe Lake. ARRC submitted proposed modifications of the proposed final APE to STB and SHPO on March 9, 2012. SHPO and STB indicated that they had no objections to the proposed modifications to the APE.

Due to the likelihood of additional changes, ARRC proposed a revised approach to STB and SHPO for dealing with future modifications to the APE. Modifications that are within the overall APE (i.e., including direct and indirect effects) will only result in a change from indirect to direct effects, and a request for modification and approval of a revised APE is not necessary. ARRC shall notify STB and SHPO of any changes in designation from indirect to direct effects, and providing an updated APE map in the *Annual Report* (see Appendix B).

Changes to the APE since the December 2011 APE include:

- Segment 6: Added areas of direct APE within Township 18 North, Range 3 West, Sections 17 and 20 (Appendix B, Extent 1)
- Segment 2: Shifted the direct APE to the east in Township 15 North, Range 4 West, Sections 18 and 19 (Appendix B, Extents 2 and 3)
- Segment 2: Reduced the footprint of the Terminal Reserve area in Township 15 North, Range 4 West, Sections 19, 30 and 31 (Appendix B, Extent 3)
- Segment 2/Reddane Avenue: Removed the southwest portion of the former Alsop Haul Road; the APE now only includes a connector road between the existing Reddane Avenue and the Alsop Pit in Township 15 North, Range 4 West, Section 32 (Appendix B, Extent 3)

² The APE for indirect effects may be less than the proposed one-mile maximum in areas where views are impeded by dense vegetation or topography.

- Segment 2: Shifted the direct APE to the east in Township 14 North, Range 4 West, Sections 7 and 8 (Appendix B, Extent 3)

3.6 Surveys

Working Group representatives participated in surveys of portions of the project APE in 2011-2012. Survey areas were determined in consultation between the Working Group, STB, and SHPO and by conditions observed in the field. The 2011-2012 cultural resources surveys are summarized as follows:

- Segment 1, Haul Road, and Section 6 Borrow Area:
 - Survey led by MSB with KTC
 - Survey conducted in September and October, 2011
 - One possible prehistoric cache pit site (TYO-00276) in the Alsop Haul Road APE is assumed eligible for the National Register of Historic Places (NRHP) under Criterion D (information potential) for the purposes of this project
 - If construction of the Alsop Haul Road is required for future project phases, additional investigation of this site may be conducted to further document the site
 - Draft reports submitted January 26 and February 27, 2012; final report submitted March 20, 2012
- Segment 6:
 - Survey led by HDR with MSB (KTC not able to participate)
 - Survey conducted in May, 2012
 - Survey identified a possible site (ANC-03741), including historic period debris; determined not eligible because it has no documented association with important historic events and only scattered surface materials remain
 - The Little Susitna River Railroad Bridge (ANC-00085) is assumed eligible for the NRHP for the purposes of this project; proposed project construction and operation would have no adverse effect
 - Draft report submitted June 15, 2012; final report submitted August 15, 2012
- Segment 5:
 - Working Group, SHPO, and STB concurred that cultural resource surveys are unnecessary due to no to low probability for cultural resources (wetlands and damage/disturbance from the Millers Reach Fire)
- Segments 3 and 4:
 - Survey led by HDR with MSB and KTC
 - Survey conducted in September, 2012
 - Survey identified no previously undocumented cultural resources within the APE; documented conditions for the Iditarod Race Trail and the Iditarod National Historic Trail; the IDSHD (ANC-03326/TY0-00203) was previously found eligible for the NRHP; STB previously determined that the PMRE project may have an effect on the IDSHD; adverse effects to portions of the IDSHD have been addressed through implementation of measures identified in the PA and MOU
 - Draft report submitted November 6, 2012; final report submitted December 3, 2012

Representative photographs of sites, artifacts or other archaeological or historic materials encountered during 2011-2012 are included in Appendix C.

4 Progress of the Undertaking

The progress of the Undertaking is summarized as follows:

- Final design is underway.
- MSB and ARRC have acquired all necessary project ROW for Segments 1, 3, and 6; ROW negotiations for Segments 2, 4 and 5 are ongoing.
- Construction began in Segment 1 in April 2012. No Segment 1 construction occurred during October through November, 2012 due to the stay on construction. No work in wetlands has been conducted due to delays in acquiring the U.S. Army Corps of Engineers (Corps) Clean Water Act (CWA) Section 404 permit (issued September 10, 2012) and the stay on construction.
- Construction bids in Segments 3 and 6 were postponed due to Section 404 permitting delays and the stay on construction. Following the issuance of the Section 404 permit and the lift of the stay on construction, Segment 6 was opened for bid in September 2012 and is proposed to close in January 2013. An invitation for bid for Segment 3 was opened in January 2013.
- Sierra Club, Cook Inlet Keeper, and Alaska Survival filed a motion for a stay of STB's authority to construct the rail line pending the review by the 9th Circuit of Appeals in September 2012. This request for stay was granted in October 2012, and construction activities were placed on hold. The stay was released in November 2012. In October 2012, these plaintiffs also filed a legal challenge in the U.S. District Court for the District of Alaska against the Corps for issuing a Section 404 permit (POA-2007-1586) for the project. A request for a stay on construction is currently under review by the Court. ARRC has intervened in the lawsuit on behalf of the Corps.
- The State of Alaska DNR is continuing its review of MSB's application for project DNR Land Use (ADL 227588) permits, DNR Easements, and assorted DNR Authorizations. A public review period is forthcoming; it is not yet known if this will affect the construction schedule.
- Phasing and schedule will be dependent upon funding, court decisions, and permit acquisition.

No significant changes are anticipated to the Undertaking. The delay in acquiring the Section 404 permit and the 9th Circuit Court of Appeals stay on construction from October through November, 2012, delayed the Project's construction schedule.

5 Effectiveness of the Programmatic Agreement (PA)

During 2011-2012, there were several occasions that afforded ARRC, STB, SHPO and PA parties opportunity to assess the effectiveness of the PA. These included: design changes necessitating modifications to the APE, surveys in portions of previously unsurveyed areas in the APE, contractor training, and PA reporting and consultation requirements. No issues or deficiencies were identified as a result of implementation and use of the PA. No amendments or changes to the PA are needed at this time.

6 Anticipated Upcoming Efforts for Identification, Evaluation, Mitigation, and Protection of Historic Properties

ARRC and the Working Group anticipate that upcoming efforts will include:

- IDSHD documentation -Prepare additional IDSHD documentation per the Implementation Plan
- Surveys - Conduct survey of portions of Segment 2, and possibly re-investigate Alsop Haul Road site (TYO-00276)
- Contractor training - Update training materials as appropriate and conduct cultural resource training for contractors as construction contracts awarded
- Continued consultation - Continue coordination with Working Group, with STB and SHPO, and with other PA parties, as appropriate

7 Consultation and Updated Contact List

Consultation adhered to the standards required in the PA and Working Group MOU. Consultation within and amongst the Working Group, SHPO, and STB is ongoing. Per the PA (Stipulation III.D.2), KTC is the point of contact for all Tribes who were concurring parties to the PA. MSB is the Certified Local Government for the project area, and the MSB representative for the Working Group acts as a point of contact for the MSB Historic Preservation Commission, which includes members from local historic preservation groups that have an interest in the project area.

Consultation for the IDSHD began with an initial list based on consulting parties identified in the PA as being interested in the IDSHD (e.g., Happy Trails Kennels [HTK], Willow Dog Musers Association [WDMA], KTC, and MSB; see PA Stipulation V). In addition to SHPO, the Working Group, and consulting parties identified in the PA, the Project Team³ contacted other dog mushers and parties known to be associated with dog sledding and other trail use in the project area. The consulting party list for the IDSHD workshops and open house is included in Attachment D.

Section 106 materials are posted on the project website as appropriate (<http://www.portmacrail.com/library.html>). An explanation of Section 106 consultation and how to become a Section 106 consulting party is also included on the project website (<http://www.portmacrail.com/involved.html>).

An update to the contact lists in PA Attachments A.2 and A.3 is included in Appendix E.

³ The Project Team consists of ARRC, MSB, and their consultants.

This page intentionally left blank.

Appendix A: Contractor Training Attendees

This page intentionally left blank.



Cultural Resources Contractor Training

January 25, 2012 - 9:00 am - 12 pm
CIRI (2525 C St.) 1st Floor Conference Room, Anchorage, Alaska

Name	Organization	Phone	Email
David Kabella	WCT	907-632-9251	dave.kabella@wilsonco.com
Jim Cronk	R&M CONSULTANTS INC.	907-522-1707	jcronk@rmconsult.com
Buck Hatchkin	AKRC	907-265-7213	hatchkin@akrr.com
ELIZABETH GRAYER	HDR	907-644-2077	Elizabeth.Grayer@hdrinc.com
Tim Swen	R & M Consultants	907-522-1707	tswen@rmconsult.com
Jean Seager-Boss	Mat-Su Borough	907 745-9259	jseagerboss@matsugov.us
Heather Ralston	MSB	232-4112	Heather.Ralston@matsugov.us
Shina Duvall	DHA/SHPO	269-8720	shina.duvall@alaska.gov
Brian O'Dowd	R+M CONSULTANTS	223-6959	bodowd@rmconsult.com
Ange Wade	Knik Tribal Council	782-7616 373370	awade@kniktribe.org
Katrina Wedeking	Shannon & Wilson	561-2120	kw@shannwil.com
Ryan Curlew	Shannon & Wilson	561-2120	rdc@shannwil.com
Thomas Keatts	Shannon & Wilson	561-2120	tmk@shannwil.com
Curtis French	Bristol	590-4992	cfrench@Bristol-Companies.com
Phil Davis	SURVBASE	338-7878	pdavis@survbase.com



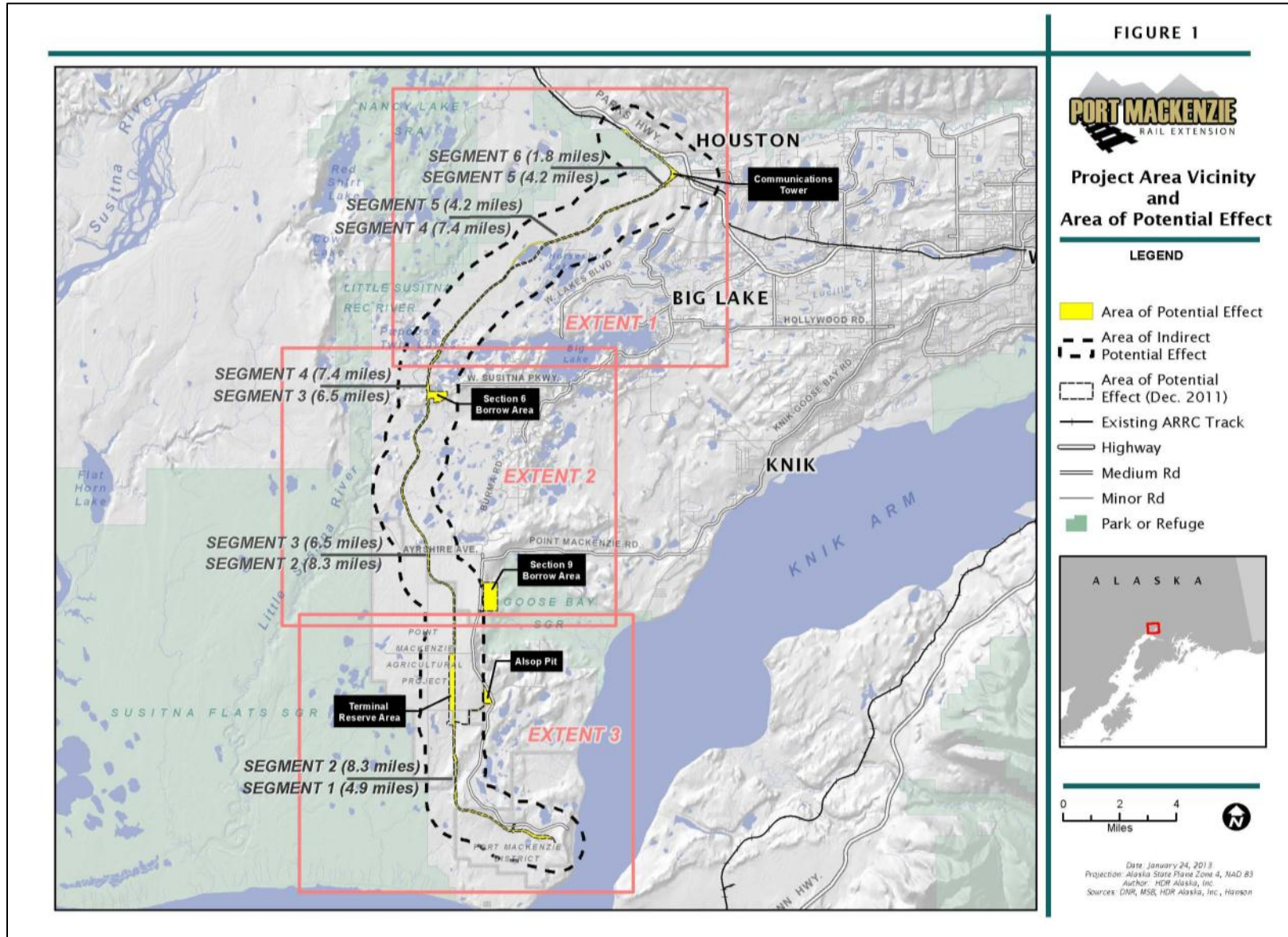
Cultural Resources Contractor Training

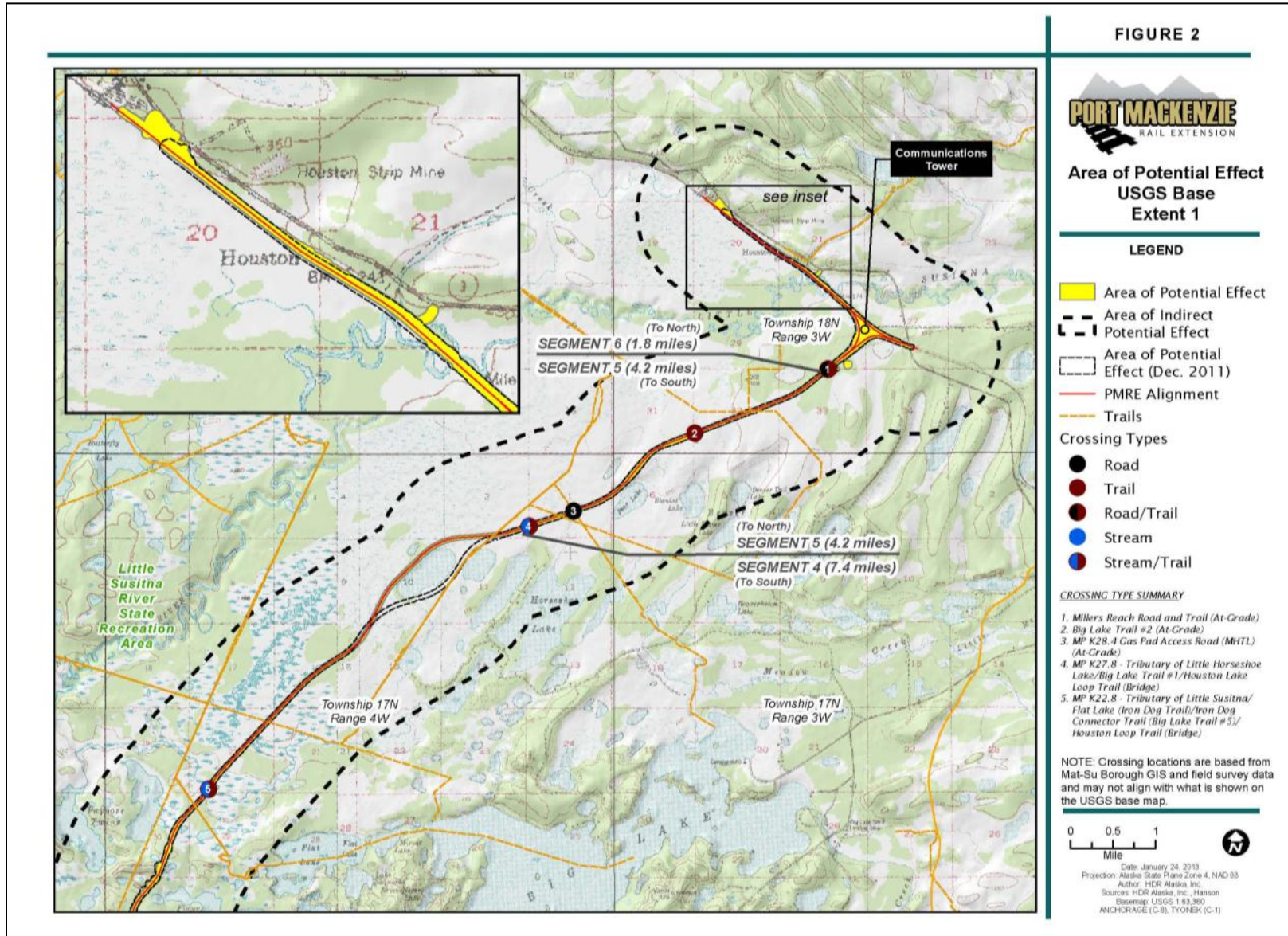
January 25, 2012 - 9:00 am - 12 pm
CIRI (2525 C St.) 1st Floor Conference Room, Anchorage, Alaska

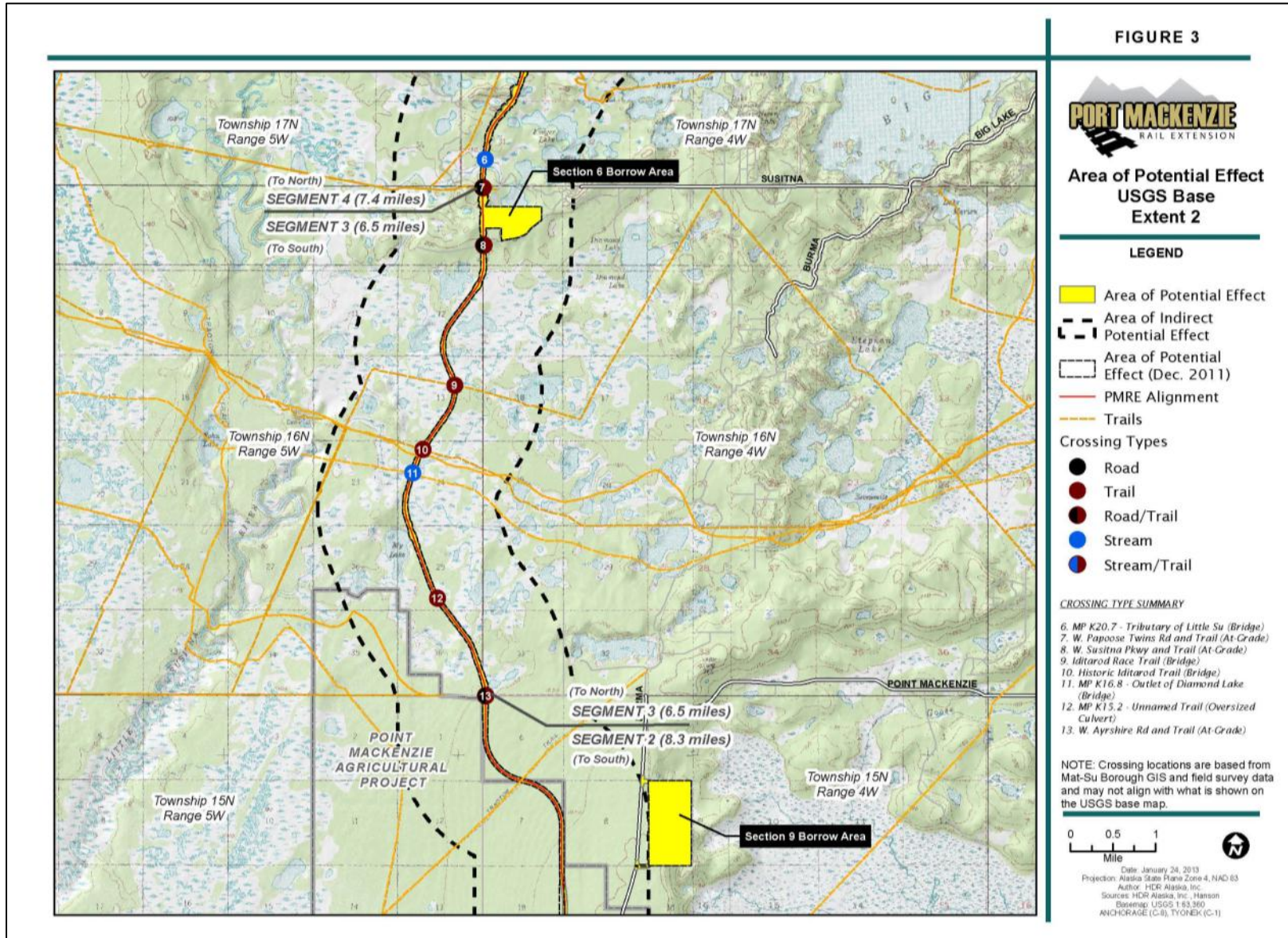
Name	Organization	Phone	Email
Elizabeth Kurcheski	Shanwil SFW	561-2120	eaK@shanwil.com
STEVE BUCHANAN	SURV BASE	338-7878	steve.buchanan@survbase.com
Kyle Brennan	SFW	561-2120	k1b@shanwil.com
Russell Hegner	SFW	561-2120	rch@shanwil.com
Greuer Johnson	SFW		glj@shanwil.com

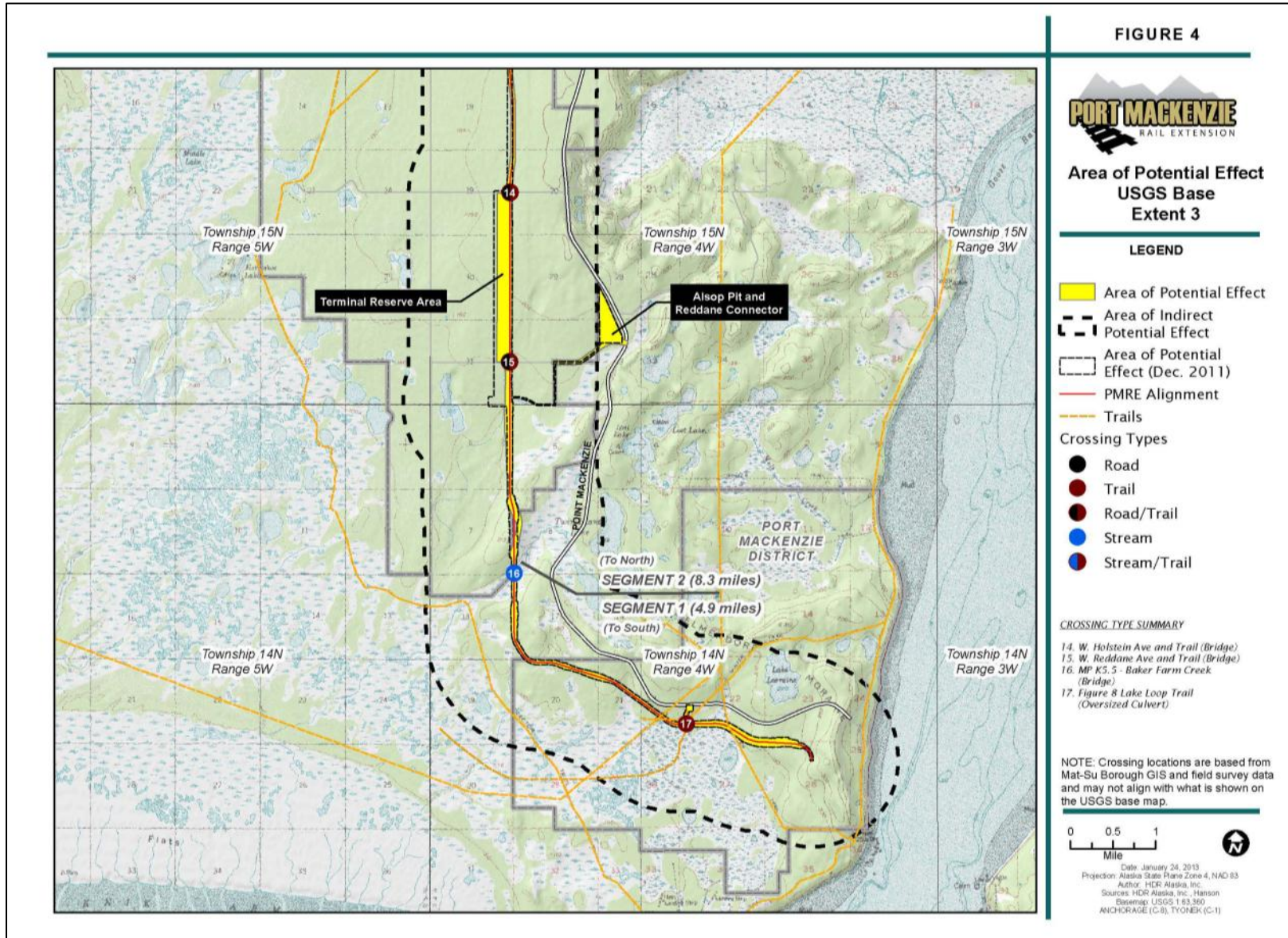
Appendix B: Area of Potential Effect (APE) Map Series

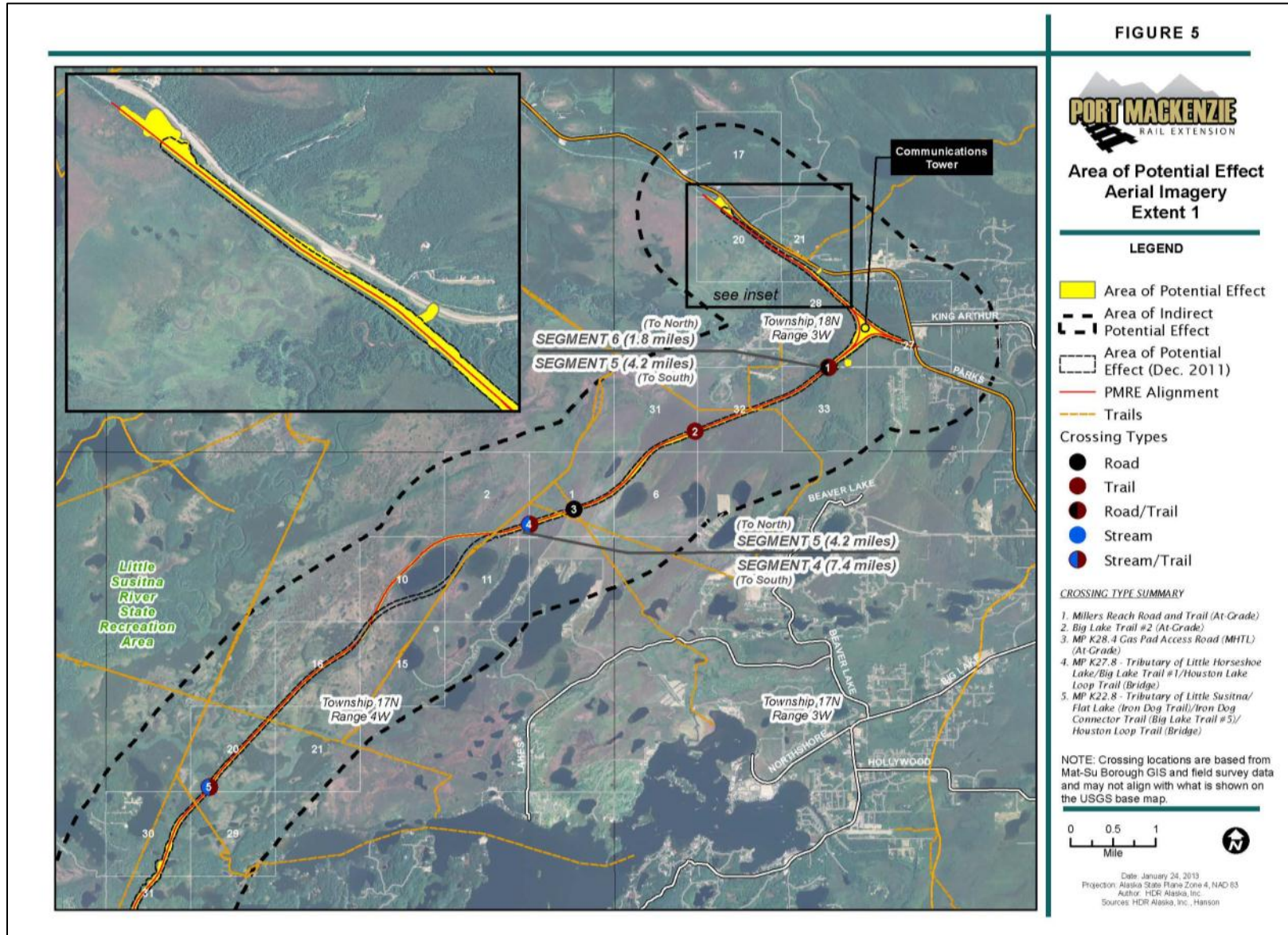
This page intentionally left blank.

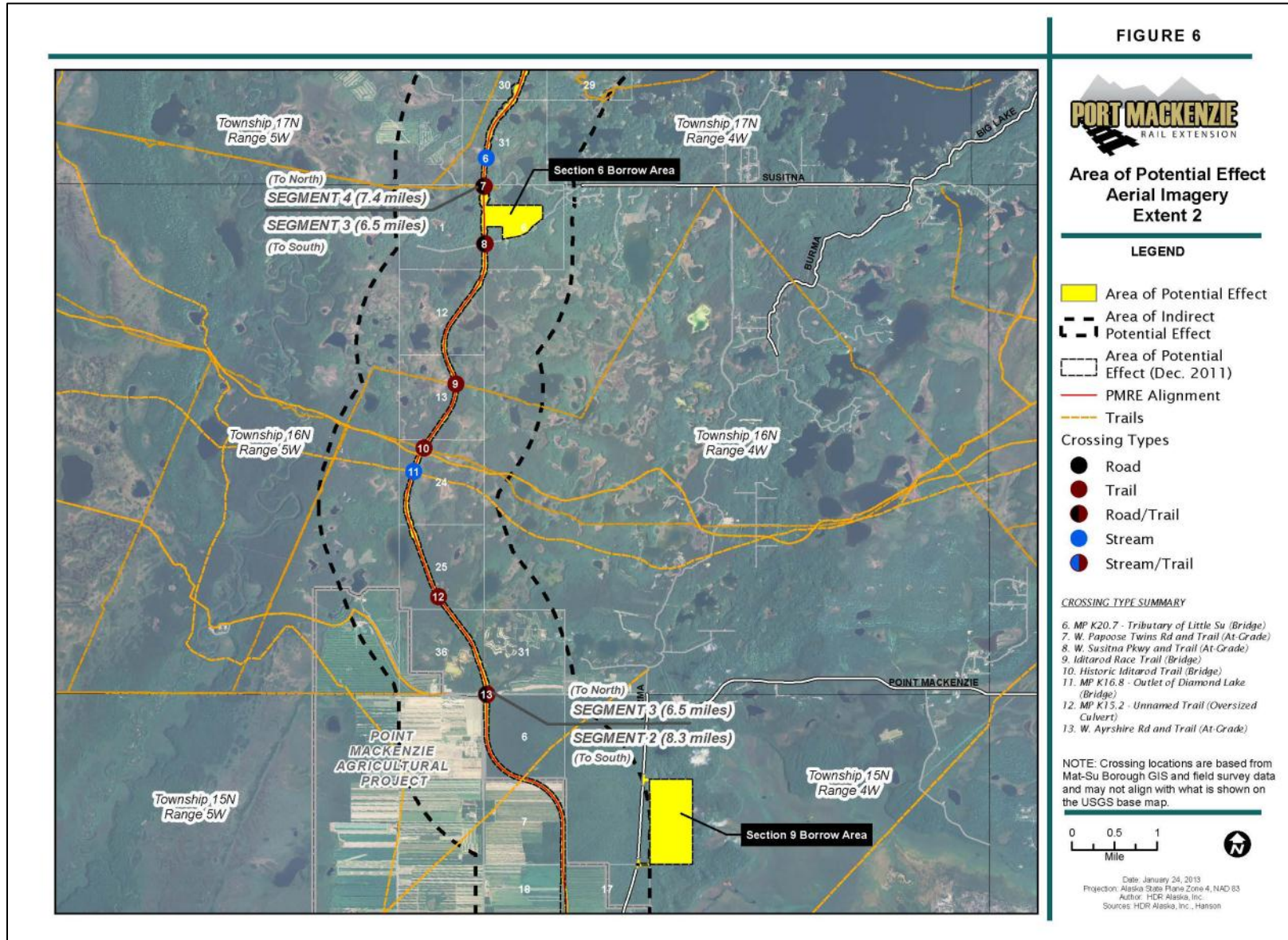


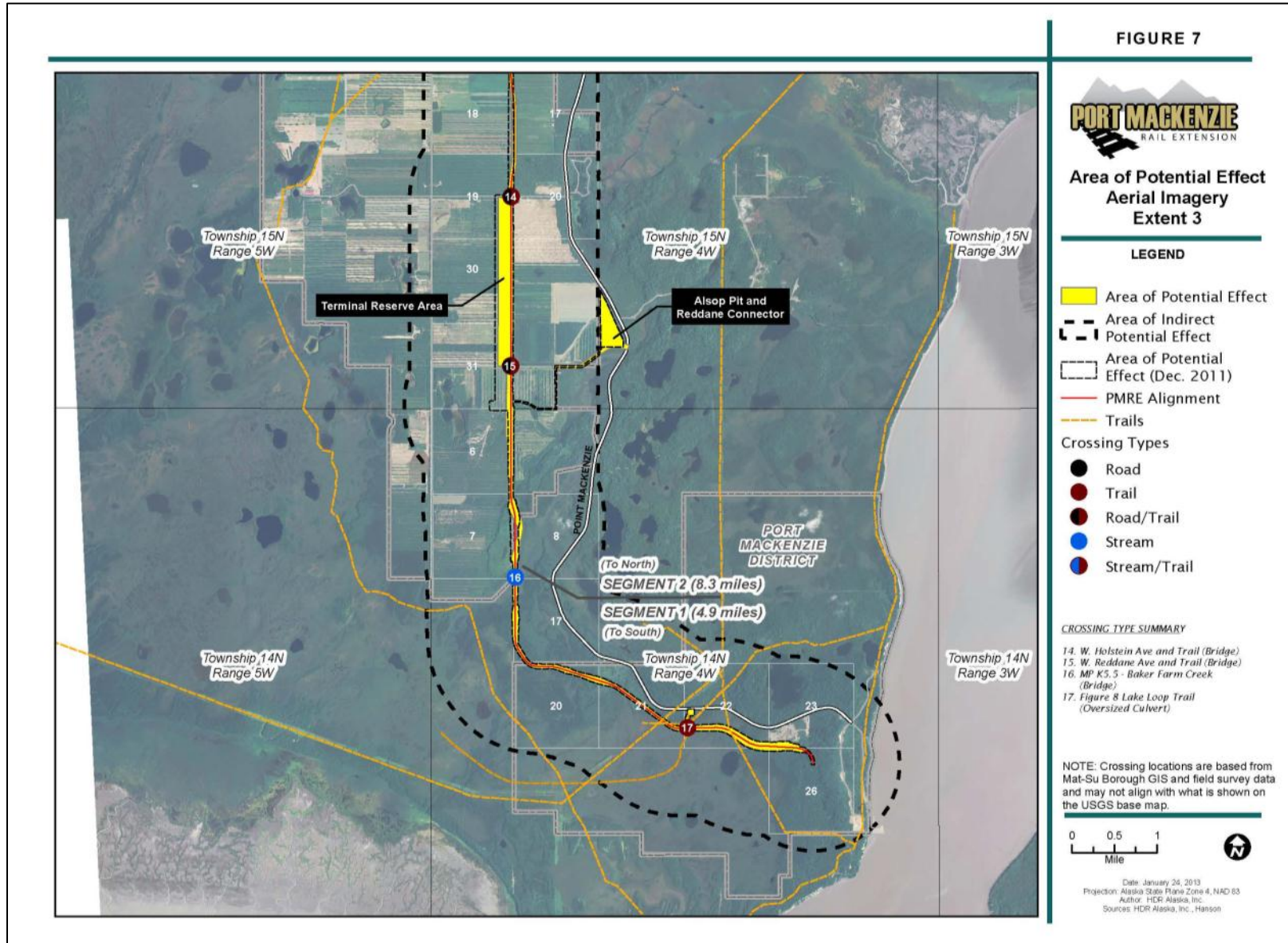












This page intentionally left blank.

Appendix C: Summary of Cultural Resources Encountered, 2011-2012

This page intentionally left blank.



Photograph C- 1: Possible modern bear/moose tree stand (Segment 1, 10/25/2011)
Photo courtesy of MSB



Photograph C- 2: Possible cultural depression that has been significantly disturbed by agricultural activity; the shovel is positioned in the center of depression (Alsop Haul Road 10/11/2011)
Photo courtesy of MSB



Photograph C- 3: Metal hinge in southwest corner of test pit (Segment 6, Parcel 80; May, 2012)

Photo courtesy of MSB



Photograph C- 4: Old cook stove and other debris (ANC-03741), looking north (Segment 6; May 2012)



Photograph C- 5: Broken bottle, ANC-03741 (Segment 6; May 2012)

Note: Bottle reads: "FEDERAL LAW FORBIDS SALE OR RE-USE OF THIS BOTTLE" (around the base of the neck of the bottle, the "4/5 QUART" (before the base of the bottle), and "101," an oval with an "I" in a diamond (Owens-Illinois Glass Company makers mark), and "47" along the edge of the base, and "D 23" in the center of the base, dating this bottle to 1947.



Photograph C- 6: West side of Little Susitna River Bridge (ANC-00085) looking north (Segment 6; May 2012)

Photo courtesy of ARRC



Photograph C- 7: Iditarod Race Trail, facing east (Segment 3; September 2012)
Photo courtesy of MSB



Photograph C- 8: Iditarod NHT from the PMRE ROW, facing south (Segment 3; September 2012)
Photo courtesy of MSB

Table C- 1: Summary of Segment 1, Alsop Haul Road, and Section 6 Borrow Area Survey

Survey Date	Project Component	Legal Description	Survey Results	Test Pits?	Test Pit Results	Cultural Resource Description	Crew Members
9/15/11	Segment #1	14N04W22	Negative	No	N/A	Possible bear/moose tree stand with coffee cans, and 5-gallon buckets	Seager-Boss, Ralston, Wade
9/28/11	Segment #1	14N04W21 14N04W22	Negative	No	N/A	Munitions canister; possible bear baiting station with 55-gallon drums	Seager-Boss, Ralston, Wade, McCausland
10/13/12	Segment #1	14N04W17	Negative	Yes	Negative	Possible bear/moose tree stand	Ralston, Martin, Wade
10/25/11	Segment #1	14N04W21	Negative	No	N/A	Modern truck camper shell; possible bear/moose tree stand	Ralston, Wade
10/26/11	Segment #1	14N04W07	Negative	No	N/A	Possible bear/moose tree stand and campfire; possible bear baiting station with 55-gallon drum and plastic jugs; geotechnical test site	Ralston, McCausland
10/11/11	Alsop Haul Road	15N04W32	Negative	No	N/A	Possible cultural depression (heavily disturbed)	Seager-Boss, Cook, Ralston, Wade
10/12/11	Alsop Haul Road	15N04W32 15N04W33	Positive	No	N/A	Three possible cultural depressions/cache pits (40x40x30 cm located 3 meters apart; TYO-00276); 2008 survey marker	Ralston, Wade
9/8/11 ⁴	Section 6 Borrow Area	16N04W06	Negative	Yes	N/A		Stone, Martin, Day
10/18/11	Section 6 Borrow Area	16N04W06	Negative	Yes	Negative	1990 MSB survey marker	Seager-Boss, Ralston, Cook, Wade, McCausland
10/25/11	Section 6 Borrow Area	16N04W06	Negative	No	N/A	1990 MSB Survey Marker (2 nd one in Section 6)	Ralston, Wade

⁴ This survey was conducted by MSB (Daniel Stone and Richard Martin) and Native Village of Eklutna (Kathy Day) cultural resource staff for investigations associated with KABATA mitigation activities.

Table C- 2: Summary of Segment 6 Survey

Survey Date	Project Component	Legal Description	Survey Results	Test Pits #	Test Pit Results	Cultural Resource Description	Crew Members
5/21/12	Segment 6	18N03W20	Positive	1	Recent glass and metal hinge in organic layer; mixed soil indicates disturbance	<ul style="list-style-type: none"> • 55-gallon barrels • Toilet base • Assay pits • Chicken wire • Tires and sheet metal • 1970-80s sedan • Pipe • Galvanized steel basin • Historic debris (ANC-03741) 	Grover, Ralston, Gerlek, Meade
5/22/12	Segment 6	18N03W21	Positive	2	Negative	Cleared trail with pits along each side	Grover, Ralston, Gerlek, Meade

Table C- 3: Summary of Segment 3 and 4 Survey

Survey Date	Project Component	Legal Description	Survey Results	Test Pit #	Test Pit Results	Cultural Resource Description	Crew Members
9/25/12	Segment 3	16N05W12 16N05W13 16N05W24 16N05W25 16N05W36 16N04W31	Negative	1	Negative	<ul style="list-style-type: none"> • Iditarod National Historic Trail • Iditarod Race Trail 	Grover, Ralston, Theodore
				2	Negative		
9/27/12	Segment 3	16N05W12 16N05W13 16N05W24 16N05W25 16N05W36 16N04W31	Negative	3	Negative	Modern bear baiting station	Grover, Ralston, Theodore, Meade
9/27/12	Segment 4	17N04W02 17N04W11 17N04W10 17N04W15 17N04W16 17N04W21 17N04W20 17N04W29 17N04W30 16N04W06 16N05W01	Negative	4	Negative	BLM survey markers	Grover, Ralston, Theodore, Meade
				5	Negative		

Appendix D: IDSHD Consulting Parties and Contacts

This page intentionally left blank.

Name	Organization	6/28/11 Workshop	7/7/11 Focus Group	10/27/11 MSB Open House	1/11/12 Workshop
Workshop/Meeting Participants					
Bud Smyth	Aurora Dog Musers Club	x	x		
Carol Tyler	Aurora Dog Musers Club			x	
Vern Cherneski	Aurora Dog Musers Club		x		
Margaret Billinger	Big Lake Chamber of Commerce			x	
Dan Mayfield	Big Lake Trails		x	x	
Cathy Mayfield	Big Lake Trails			x	
Mike Donald	Big Lake Trails			x	
Cole Donald	Big Lake Trails			x	
Richard Gaffey	Big Lake Trails			x	
Jeff Bruno	DNR			x	
Kyle Kidder	DNR	x	x	x	x
Lesli Schick	DNR	x	x	x	x
Doug Gasek	DNR/SHPO	x	x		
Shina duVall	DNR/SHPO	x	x	x	x
Summer Rickman	DNR/SHPO				x
Judy Bittner	DNR/SHPO, Iditarod Historic Trail Alliance	x	x	x	x
Vern Halter	Dream a Dream Dog Farm	x	x	x	x
Martin Buser	Happy Trails Kennels				x
Ramey Smyth & Becca Moore	Homestretch Kennel	x	x		
Ralph Buzard	Houston Running			x	
Kevin Keeler	Iditarod National Historic Trail Administrator (BLM)			x	x
Terry Langholz	Iditarod Trail Blazers	x	x	x	x
Chas St. George	Iditarod Trail Committee	x	x		
Darrell Davis	Iditarod Trail Committee			x	
Greg Bill	Iditarod Trail Committee	x	x	x	x
Mark Nordman	Iditarod Trail Committee			x	x
Richard Plack	Jr. Iditarod Trail Manager	x		x	
Jon Brautigam	Knik Dog Musers Association, Iditarod Trail Blazers	x	x	x	x
Kelley Griffin	Knik Dog Musers Association	x	x		x
Angie Wade	Knik Tribal Council	x		x	x
Jaik Campbell	Mat-Su Trails Council			x	

Name	Organization	6/28/11 Workshop	7/7/11 Focus Group	10/27/11 MSB Open House	1/11/12 Workshop
Sue Allen	Northern Lights 300 Dog Race			x	
Cim & Corinne Smyth	Perseverance Springs Farm	x	x	x	
Toby Riddell	Point MacKenzie Community Council			x	
Dale & Jenny Evans	Willow Dog Musers Association	x			
Donna Quante	Willow Dog Musers Association	x			
Sue Morgan	Willow Dog Musers Association	x			
Vic Stanculescu & Tina Owen	Willow Dog Musers Association			x	
Steve Charles	Willow Trial Committee	x	x	x	
Bill Johnson				x	
Chris Kosinski				x	
Elaine & Gene Martin			x		
Ellen Halverson				x	
Jim Clemensen				x	
Kathie Smith		x			
Mike & Anna Stephan		x			
Noreen Austermuhl				x	
Scott Lanene					x
Sharon Berg				x	
Project Team Members Participating in Workshops/Meeting					
Barbara Hotchkin	ARRC	x	x		x
Brian Lindamood	ARRC	x	x	x	x
Brad Sworts	MSB			x	x
Bruce Paulsen	MSB	x	x	x	x
Fran Seager-Boss	MSB	x	x	x	x
Heather Ralston	MSB	x			x
Todd Rinaldi	MSB			x	
Elizabeth Grover	HDR	x	x	x	x
Jessica Manifold	HDR	x		x	x
RaeShaun Schmidt	HDR	x	x	x	
Rosetta Alcantra	HDR	x	x	x	x
Zoe Meade	HDR				x
Invited Parties (did not attend)					
Bob Chlupach	Aurora Dog Musers Club				

Name	Organization	6/28/11 Workshop	7/7/11 Focus Group	10/27/11 MSB Open House	1/11/12 Workshop
Larisa Meyers-McCoin	Aurora Dog Musers Club				
Kathy Chapoton	Happy Trails Kennels				
Joanne Potts	Iditarod Trail Committee				
Kevin Kastner	Iron Dog				
Harry Caldwell	Knik Dog Musers Association, Knik 200 Organization				
Barb Redington	Knik Dog Musers Association				
Richard Porter	Knik Tribal Council				
Debra Call	Knik Tribal Council				
Helen Hegener	Northern Lights Media				
Jody Simpson	Senator Huggins Office				
Bruno & Joan Bryner	Willow Dog Musers Association				
DeeDee Jonrowe	Willow Dog Musers Association				
Erin McLarnon	Willow Dog Musers Association				
Robert Sexton	Willow Dog Musers Association				
Cindy Bettine					
Dan & Alice Huttunen					
Frank Sihler					
Joe Meehan					
Kevin Saiki					
Lynn McCoin					
Roxann Dayton					
Sam Amato					

This page intentionally left blank.

**Appendix E: Updates to Contact Lists
in PA Attachments A.2 and A.3**

This page intentionally left blank.

A.2. Tribes and Alaska Native Organization Contact List [UPDATED] Federally Recognized Tribes and Tribal Groups

Gary Harrison, Chief
Chickaloon Village Traditional Council

Send information to:

Jennifer Harrison, Executive Director

P.O. Box 1105

Chickaloon, AK 99674-1105

Phone: 907-745-0707 (General)

Phone: 907-745-0749 (Direct)

Fax: 907-745-0709

jenni@chickaloon.org

Other contact:

Gary Stevig, Transportation Assistant Director, (907) 745-0854

Lee Stephan, President

Native Village of Eklutna

26339 Eklutna Village Road

Chugiak, Alaska 99567

Phone: 907-688-6020

Fax: 907-688-6021

president@eklutna-nsn.gov

Other contact:

Marc Lamoreaux, Land & Environment Director, (907) 688-6020

Debra Call, President

Knik Tribal Council

PO Box 871565

Wasilla, Alaska 99687-1565

Phone: 907-373-7991

Fax: 907-373-2161

dcall@kniktribe.org

dcall@alaskanative.net

Other contacts:

Richard Porter, Executive Director, Phone: 907-373-7971, rporter@kniktribe.org

Frank Standifer, President

Native Village of Tyonek

PO Box 82009

Tyonek, Alaska 99682-0009

Phone: 907-583-2201

Fax: 907-583-2442

Other contact:

Jessica Standifer, Environmental Coordinator, Phone: 907 583-2201, jessica_s@tyonek.net

Alaska Native Regional Corporations

Sophie Minich, President and Chief Executive Officer

Cook Inlet Region, Inc.

2525 C Street, Suite 500

P.O. Box 93330

Anchorage, Alaska 99509-3330

Phone: 907-274-8638

Fax: 907-279-8836

sminich@ciri.com

Other contact:

Kim Cunningham, Director, Land and Resources, 907-274-8638

Alaska Native Village Corporations

Curtis McQueen, Chief Executive Officer

Eklutna, Incorporated

16515 Centerfield Dr., Suite 201

Eagle River, AK 99577

Phone: 907-696-2828

Fax: 907-696-2845

curtis@eklutnainc.com

Other contact:

Jim Arnesen, Corporate Land & Regulatory Manager, 907-696-2828

Raymond Theodore, President

Knikatu, Incorporated

P.O. Box 872130

Wasilla, Alaska 99687-2130

raymondtheodore@hotmail.com

Phone: 907-376-2845

Fax: 907-376-2847

Michaelene Stephan, President

Tyonek Native Corporation

1689 C St., Suite 219

Anchorage, AK 99501-5131

Phone: 907-272-0707

Fax: 907-274-7125

Other contact:

Bart Garber, Chief Executive Officer, 907-272-0707

Eydie Baller, President
Chickaloon-Moose Creek Native Association, Inc.
P.O. Box 875046
Wasilla, AK 99687
Phone: 907-373-1145
Fax: 907-373-1004

Gloria O'Neill, President and Chief Executive Officer
Cook Inlet Tribal Council
3600 San Jeronimo Dr.
Anchorage, AK 99508
Phone: 907-793-3600
Fax: 907-793-3602

Other

Aaron Leggett, Dena'ina Cultural Historian, **Anchorage Museum Special Exhibits Curator**
Phone: (907) 929-9274
aleggett@anchagemuseum.org

A.3. Dog Mushing Organizations/Other Interested Groups Contact List **[UPDATED]**

Dog Mushing Organizations

Pat Welsh, President
Willow Dog Musers Association
P.O. Box 858
Willow, AK 99688
president@willowdogmusers.org

Martin Buser
Happy Trails Kennels
P.O. Box 520997, Mile 4.5 West Lakes Blvd.
Big Lake, AK 99652
Phone: 907-355-7898 (cell)
Additional contact: Kathy Chapoton, kchap1@me.com

Vern Halter
Dream a Dream Dog Farm
P.O. Box 389
Willow, AK 99688
Phone: 907-495-1197
vhalter@mtaonline.net

Steve Charles, Chairman
Willow Trail Committee
Phone (907) 495-6368.
Fax: (907) 495-1924
scharles@mtaonline.net

Chas St. George
Iditarod Trail Committee
PO Box 870800
Wasilla, AK 99687
cstgeorge@iditarod.com

Lori Henry, Vice President
Iditarod Historic Trail Alliance
PO Box 2323
Seward, Alaska 99664
lbhenry@gci.net

Other Interested Groups

Fran Seager-Boss, Cultural Resources Specialist
Matanuska Susitna Borough Historic Preservation Commission
350 East Dahlia Avenue
Palmer, Alaska 99645
Fran.Seager-Boss@matsugov.us
(907) 745-9859

Additional Contacts:

Vickie Cole, Cultural Resources Assistant, (907) 745-9655, Victoria.Cole@matsugov.us
Dan Stone, Daniel.Stone@matsugov.us

Jim Barnett
Cook Inlet Historical Society
121 W. 7th Avenue
Anchorage, AK 99501-3611
Phone: 907 346-2755; Fax: 907-343-6149
jbarnett@alaska.com

Julie Decker, Chief Curator/History Research Curator
Anchorage Museum
625 C Street; Anchorage, AK 99501
Phone: 907-929-9237
jdecker@anchagemuseum.org

Wasilla-Knik-Willow Creek Historical Society

300 N. Boundary Street, Suite B

Wasilla, AK 99654

Phone: 907-376-2005

wasillaknikhistoricalsociety@yahoo.com; kwkchistorical@hotmail.com

Museum of Alaska Transportation and Industry

P.O. Box 870646

Wasilla, AK 99687

mati@mtaonline.net (closed for winter; leave message)

Phone: 907-376-1211

Palmer Historical Society

P.O. Box 1935

Palmer, AK 99645-1935

Phone: 907-745-1935

colony@palmerhistoricalsociety.org

This page intentionally left blank.