



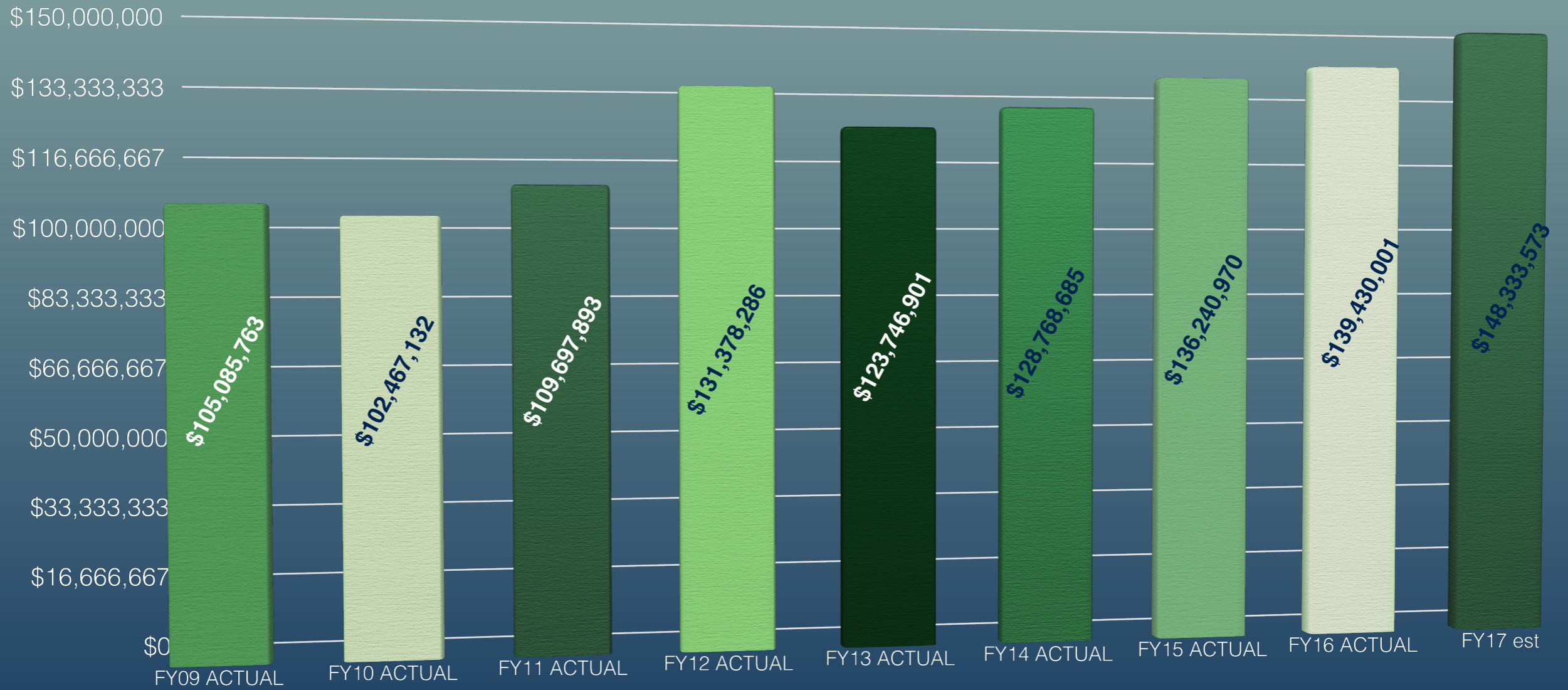
2018 BUDGET

March 28, 2017

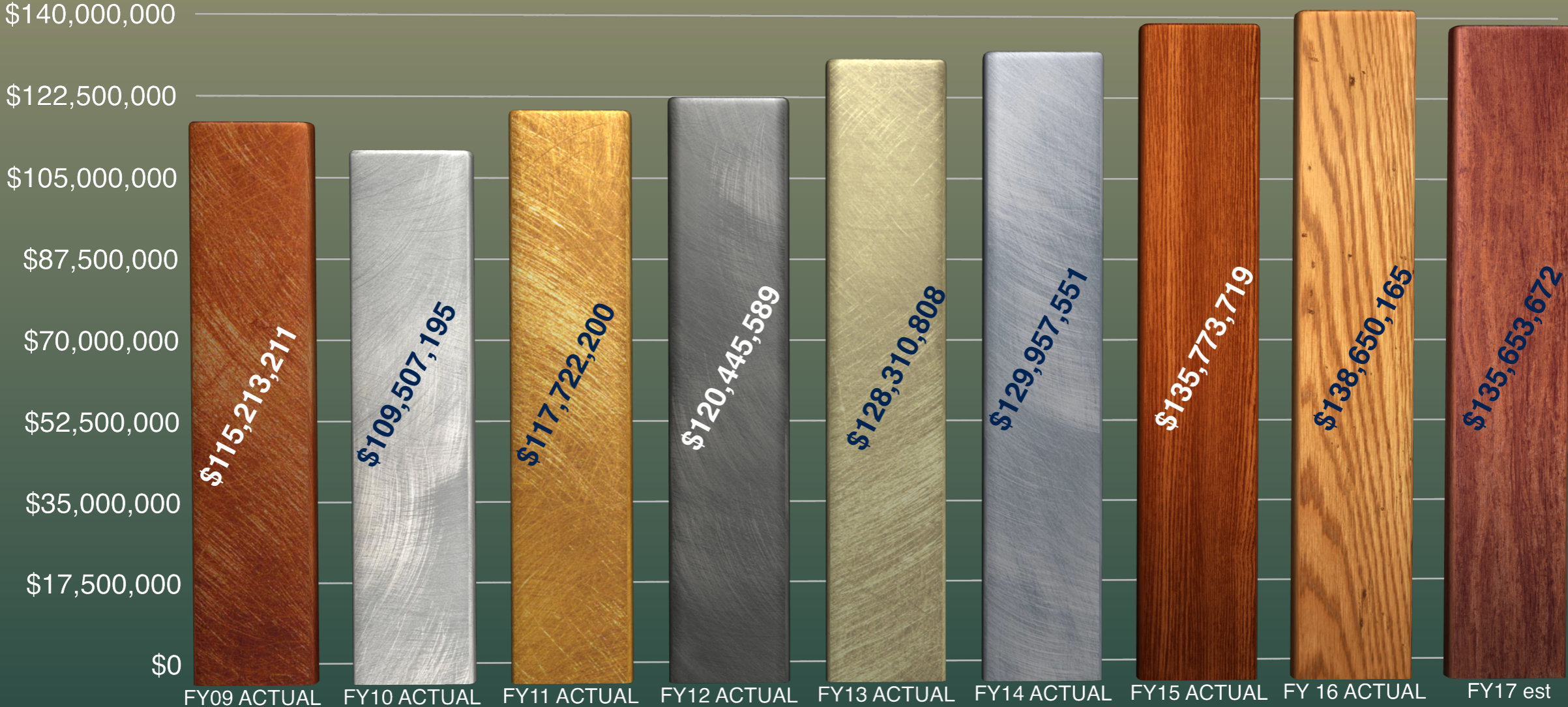
JOHN MOOSEY, BOROUGH MANAGER



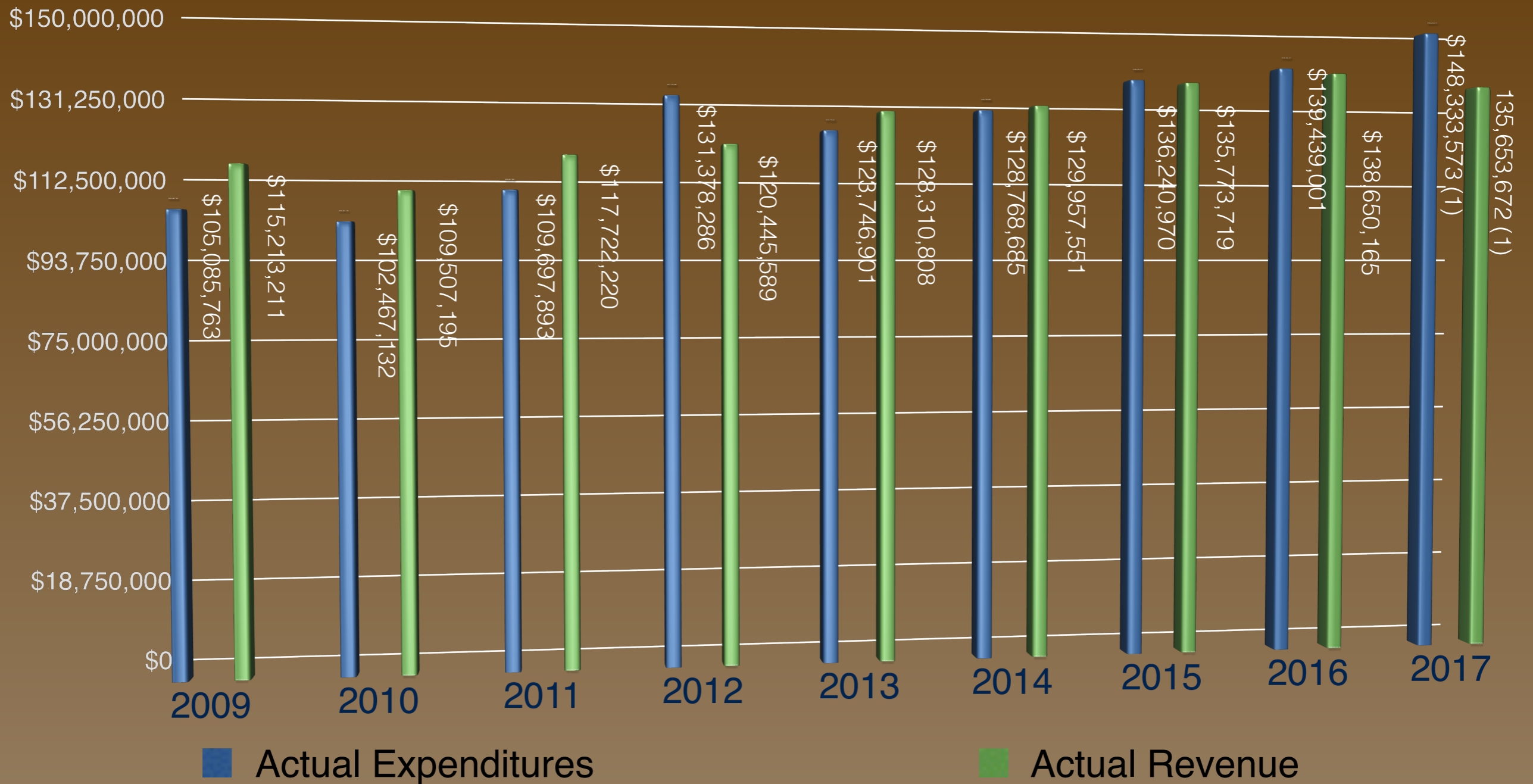
AREAWIDE FUND - ACTUAL EXPENDITURE HISTORY



AREAWIDE FUND - ACTUAL REVENUE HISTORY



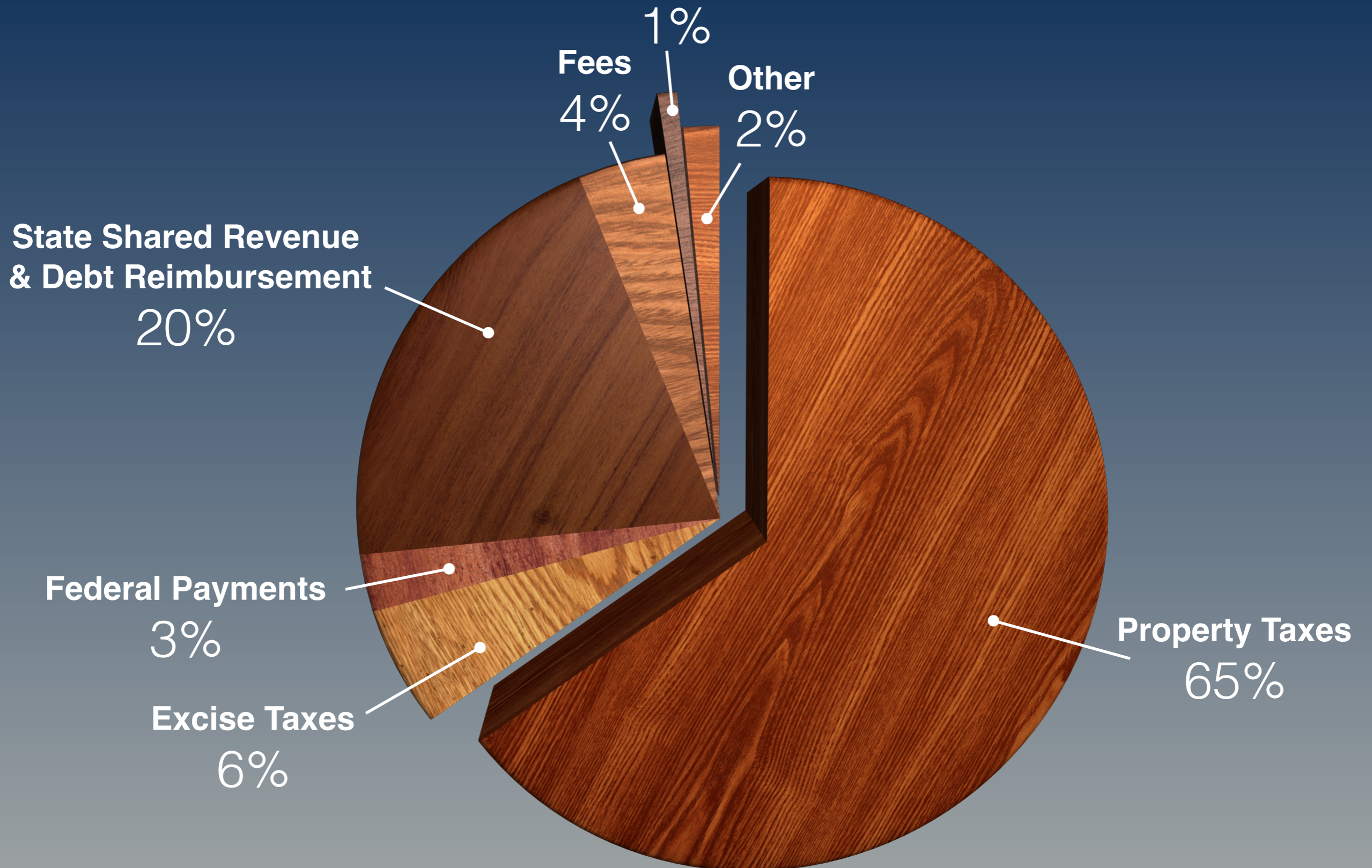
ACTUAL EXPENDITURE vs REVENUE HISTORY



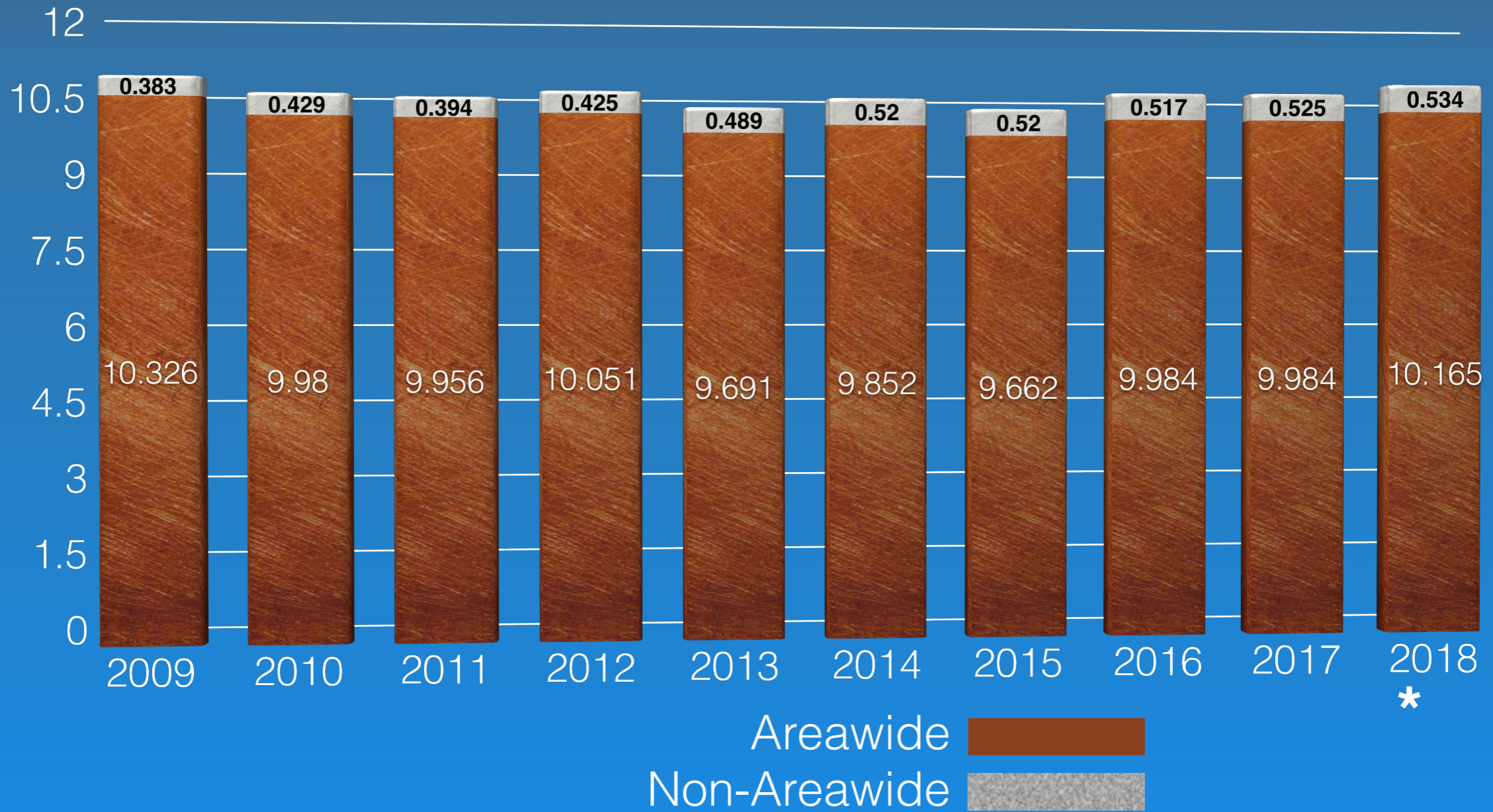
(1) estimate

AREAWIDE REVENUE SUMMARY

Transient Accommodations Tax



GENERAL FUND - AREAWIDE & NON-AREA WIDE MILL LEVY HISTORY & PROJECTIONS

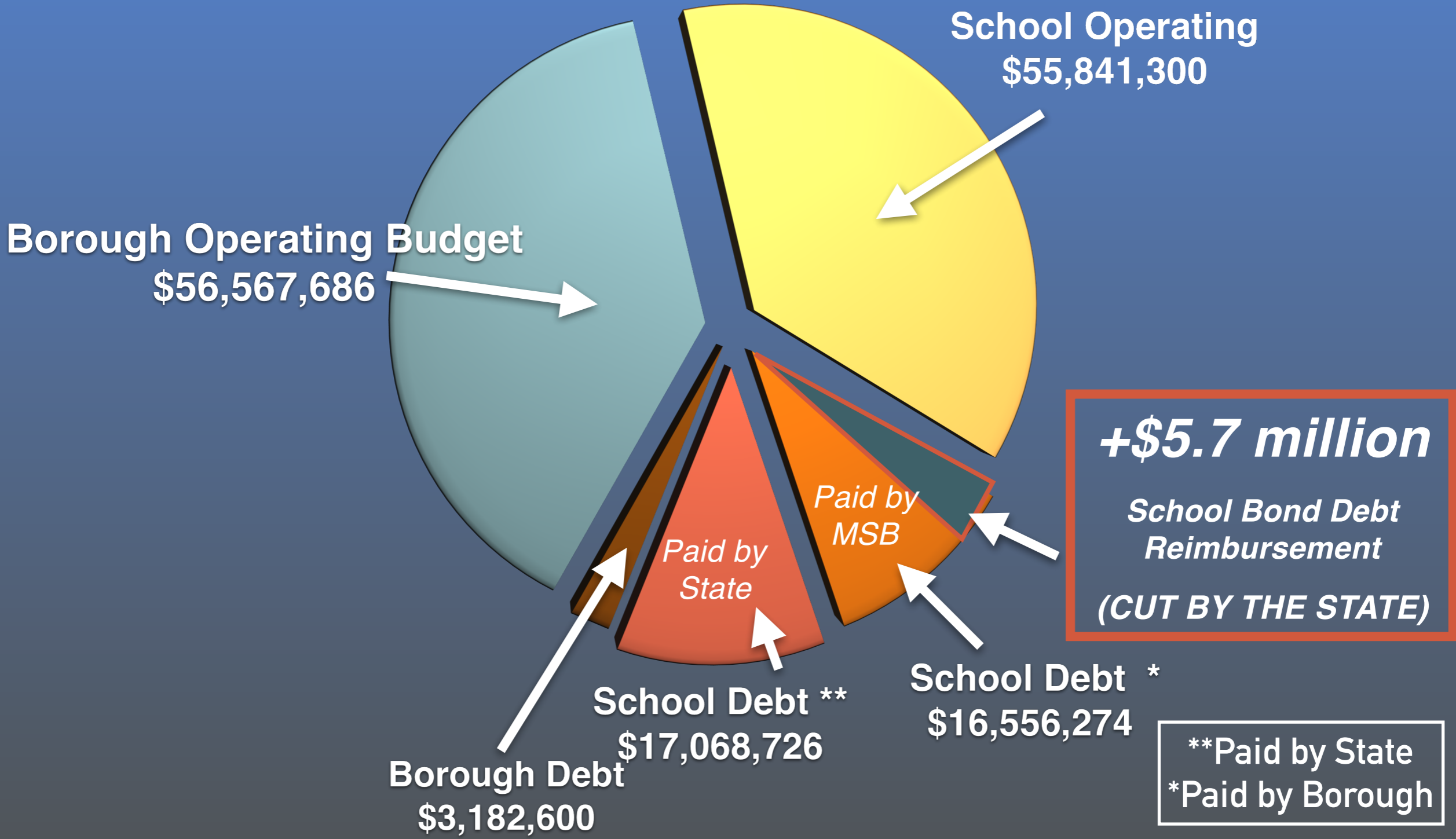


* Estimate

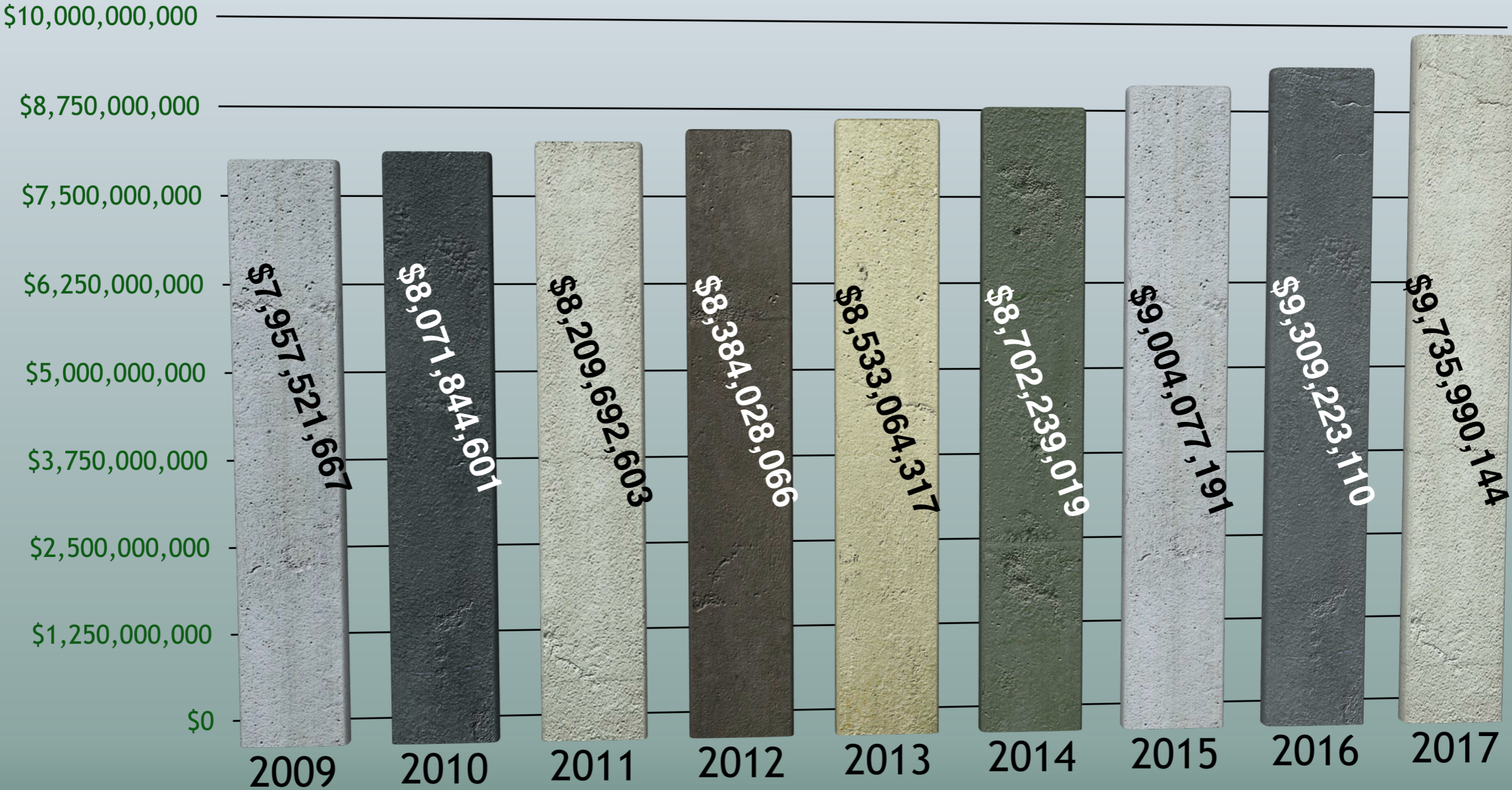
2017 APPROVED GENERAL FUND EXPENSES

by major categories

(Includes pass-thru funds for general fund)

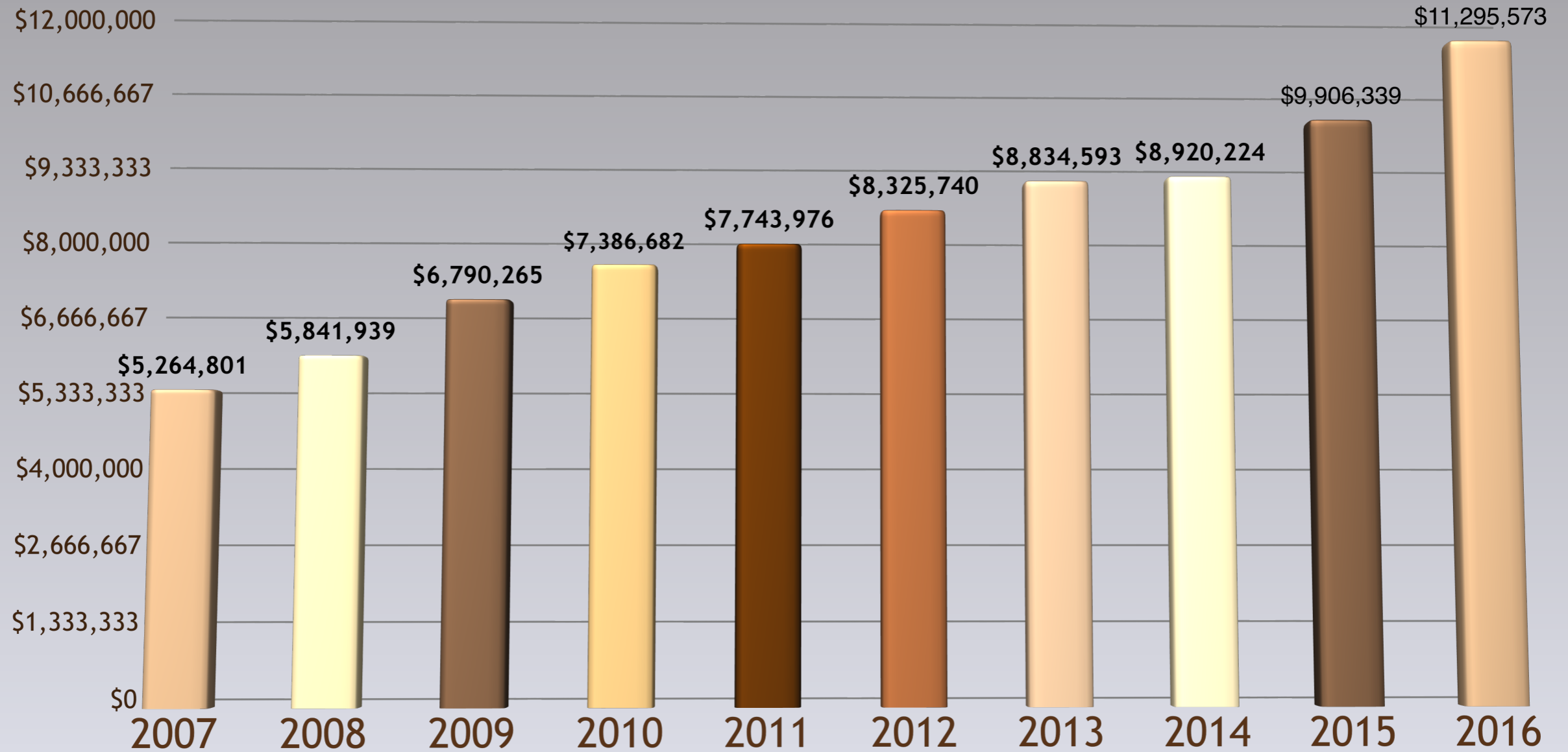


ANNUAL ASSESSED VALUE



PROPERTY TAXES NOT COLLECTED ANNUALLY

Seniors / Disabled Vets and Spouses Property Tax-Exemption





FUTURE RISKS

Municipal Revenue Sharing - Loss of \$3M since 2015

Federal PILT - Could lose part or all entirely

School funding risk - shifting the financial burden from State to Borough

Increased Borough costs for PERS/TRS

Outdated Infrastructure

Reduced State Services

- *Fewer Troopers*
- *Maintenance on state roads and bridges*
- *Health and Human Services*

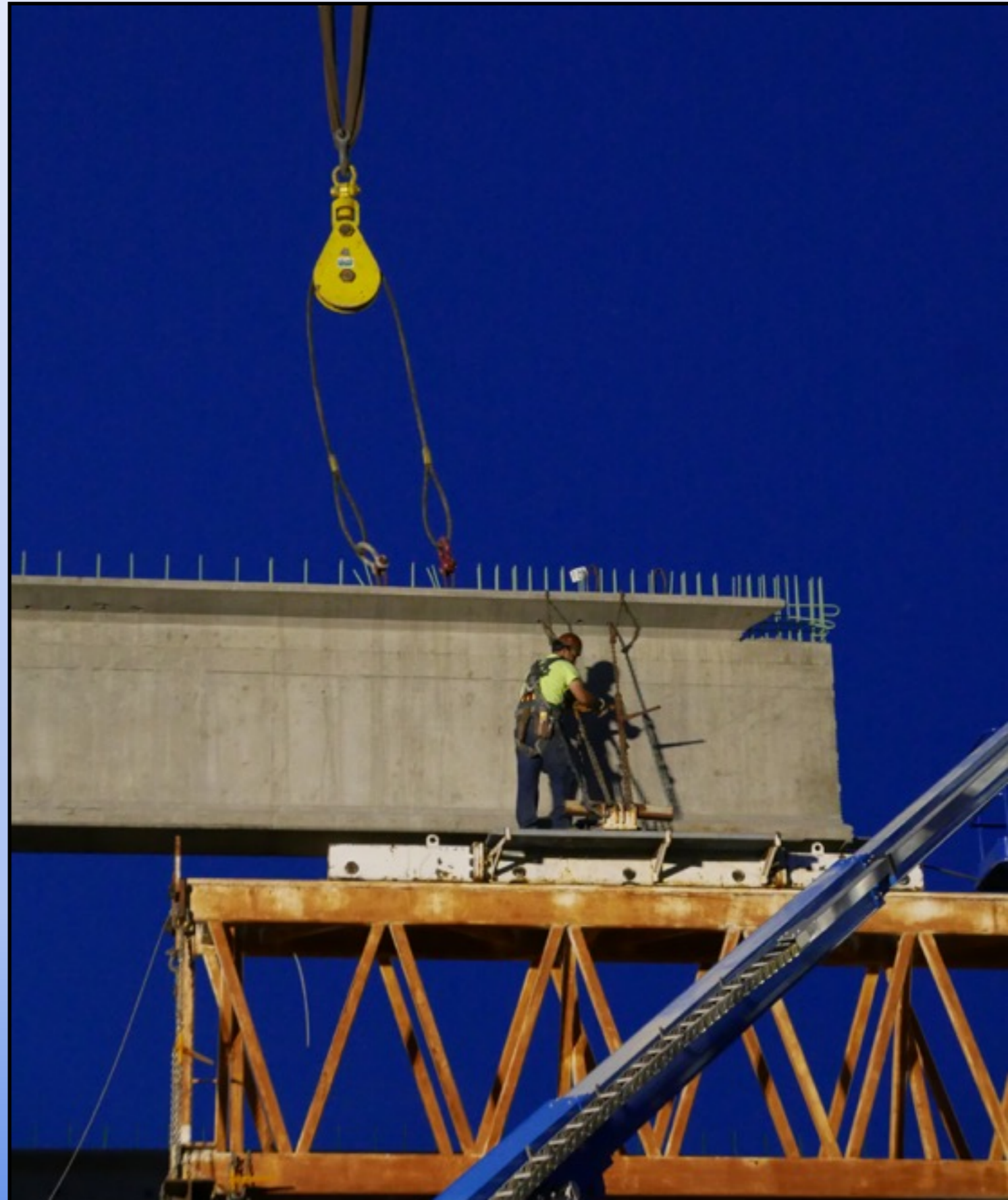
OPPORTUNITIES



- Astoria Forestry Products
- Alaska LNG
- Donlin Gold
- Staging for Military - Eielson
- A2A

FUNDED CAPITAL PROJECTS

- Station 7-1
- Training Center
- Trunk Road South
- Rec Bond Projects



TRANSPORTATION CHALLENGES



- ▶ Bogard/Seldon
- ▶ KGB
- ▶ Parks Highway
- ▶ Bogard/Engstrom
- ▶ Seldon/Beverly Lakes
- ▶ FTA Grant Issue
- ▶ Port Repair



THE TOP 7

Run

- Operations — Radio & Alert System <IN PROCESS>
- Recreation — Pools <IN PROCESS>
- Pension — School & Borough Funding <CHALLENGE>

Grow

- Transportation - Including Seward Meridian Upgrade <2019>
- Port - Complete Rail Spur <FAST LANE>

Transform

- Facility/Services - Septage & Leachate <RFP OUT>
- Community Services - Smart Communities Program
<IN PROCESS>



Thank You Assembly

