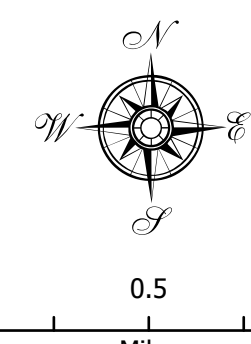


WEST LAKES
FSA #136

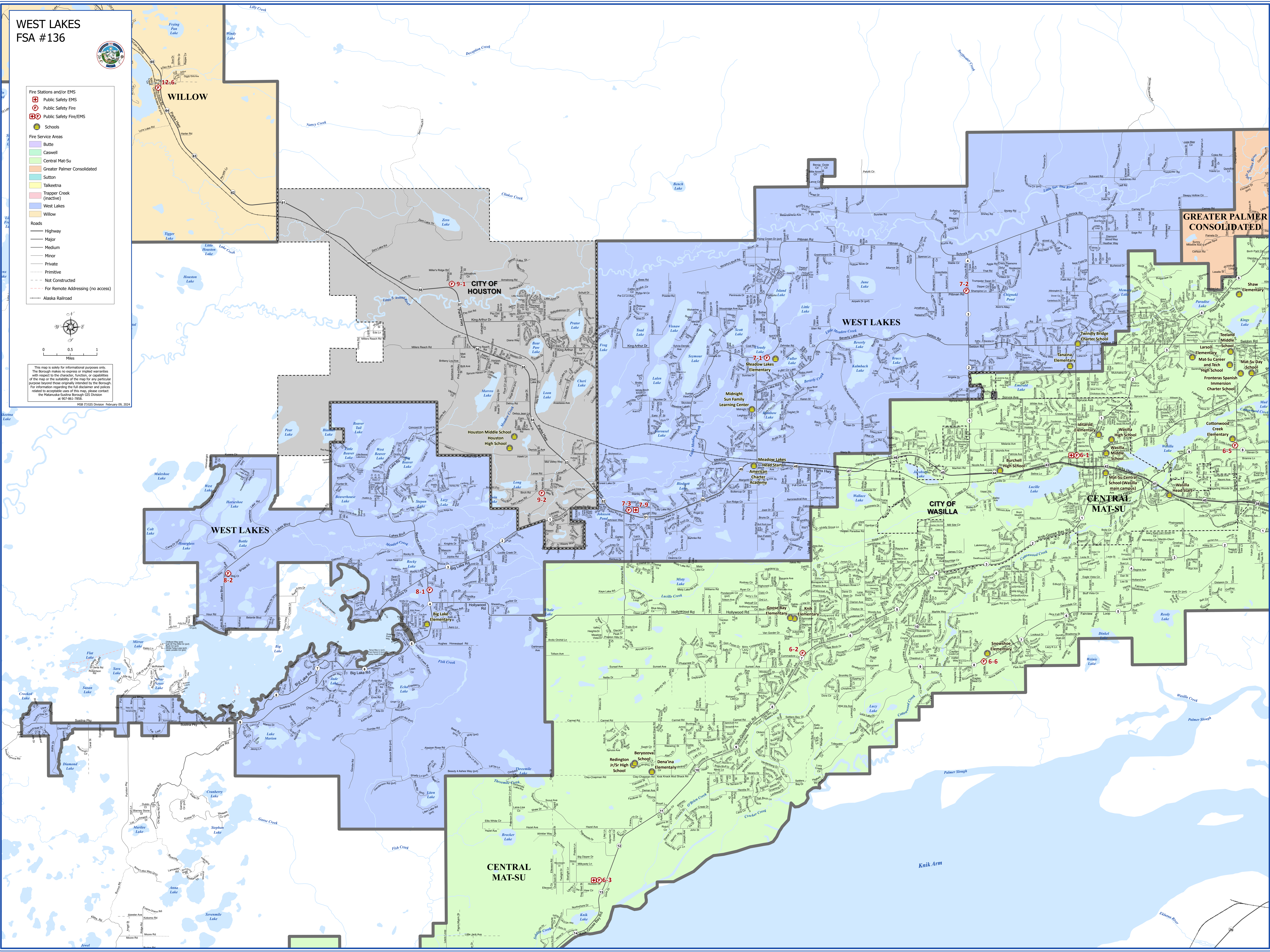


- Fire Stations and/or EMS
 - Public Safety EMS
 - Public Safety Fire
 - Public Safety Fire/EMS
- Schools
- Fire Service Areas
 - Butte
 - Caswell
 - Central Mat-Su
 - Greater Palmer Consolidated
 - Sutton
 - Talkeetna
 - Trapper Creek (inactive)
 - West Lakes
 - Willow
- Roads
 - Highway
 - Major
 - Medium
 - Minor
 - Private
 - Primitive
 - Not Constructed
 - For Remote Addressing (no access)
 - Alaska Railroad



This map is solely for informational purposes only. The Borough makes no express or implied warranties with respect to the character, function, or quantities of the map or the suitability of the map for any particular purpose beyond those originally intended by the Borough. For information regarding the full disclaimer and policies related to acceptable uses of this map, please contact the Naganwaka-Sustina Borough GIS Division at 907-861-7858.

MSB ITGIS Division February 09, 2024



WILLOW

CITY OF HOUSTON

WEST LAKES

GREATER PALMER CONSOLIDATED

WEST LAKES

CITY OF WASILLA

CENTRAL MAT-SU

CENTRAL MAT-SU